

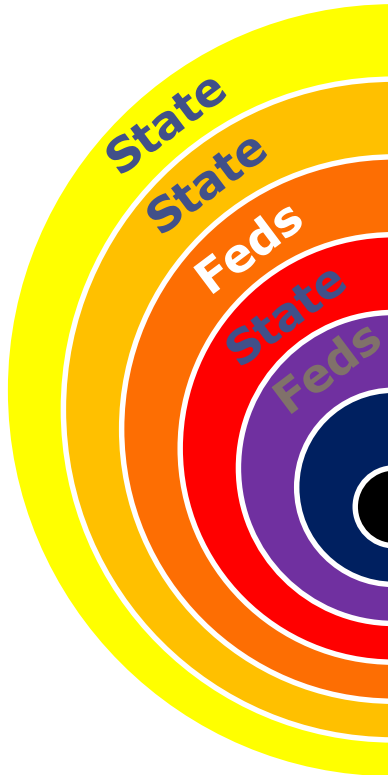
FBRMPO Board

May 28, 2020

MTP 2045

MTP UPDATE

Life of a Transportation Project



2040 Plan	<ul style="list-style-type: none">• Statewide Vision• Strategic Corridors
CTP	<ul style="list-style-type: none">• 30+ Years• No \$ Constraint
MTP	<ul style="list-style-type: none">• 25 Years, Used for AQ Determinations• Based on Revenue Forecast
SPOT	<ul style="list-style-type: none">• Scores Projects for Effectiveness• Results go into STIP/TIP
STIP/TIP	<ul style="list-style-type: none">• 0-5 and 6-10 Years• Specific Funding Sources Identified
NEPA/Design	<ul style="list-style-type: none">• Project alternatives are assessed• Final project design and cost
Construction	<ul style="list-style-type: none">• Project Let, Built• Facility Opened

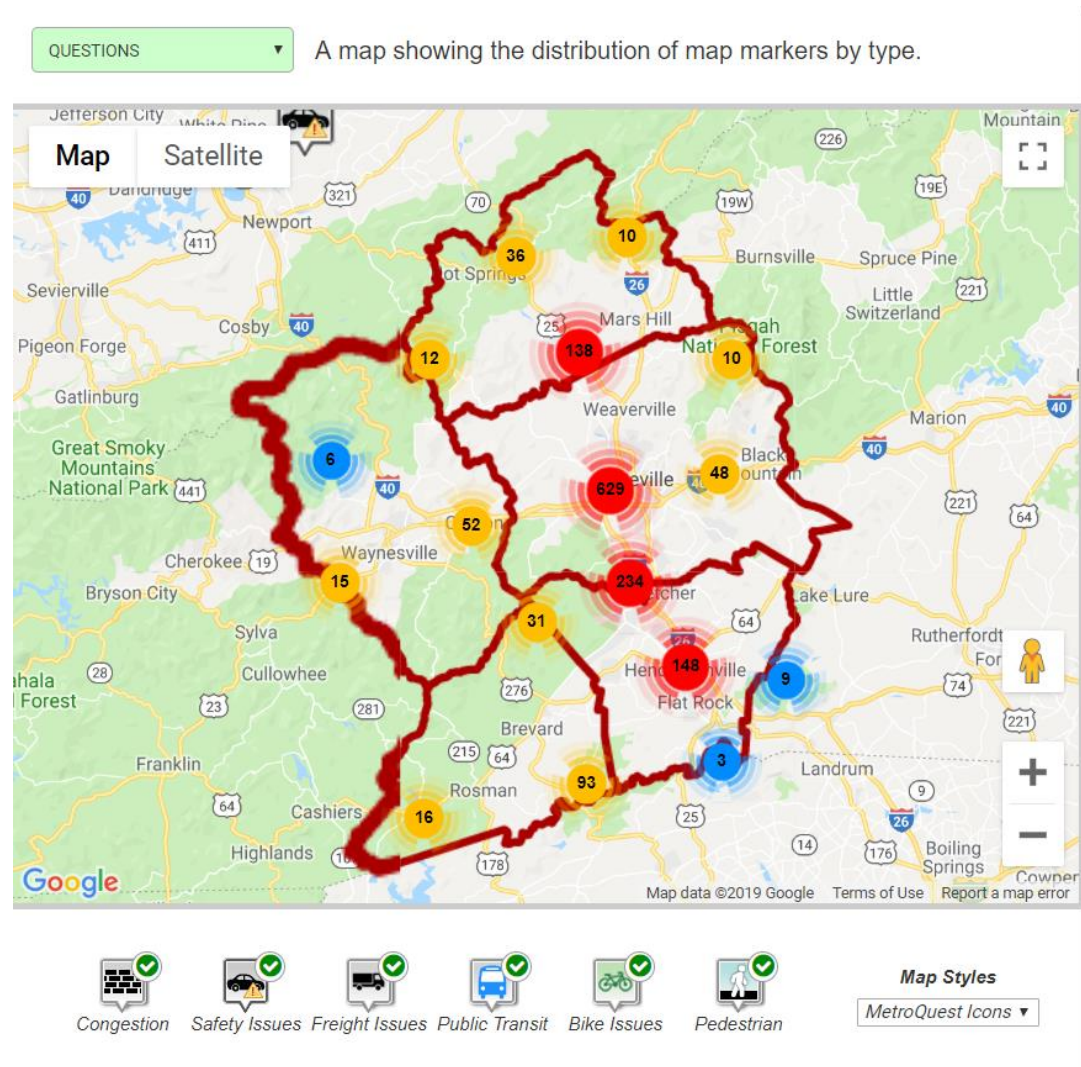
CMP-informs the middle 3

MTP Overview

§450.330(a) “The FHWA and the FTA shall jointly find that each metropolitan TIP is consistent with the current Metropolitan Transportation Plan. . .”

2019 Public Survey

- 1,503 Markers
 - Congestion- 546
 - Safety- 282
 - Bicycle- 269
 - Transit- 192
 - Pedestrian- 144
 - Freight- 70
- 846 Comments



October Workshop



Goals & Objectives

MTP GOAL

Improve Safety

Manage Congestion and System Reliability

Ensure Changes Respect Our Unique Places and Environments

Improve Public Transportation

Maintain and Improve Safe Freight Movements Within and Through Our Region

Improve Infrastructure Condition

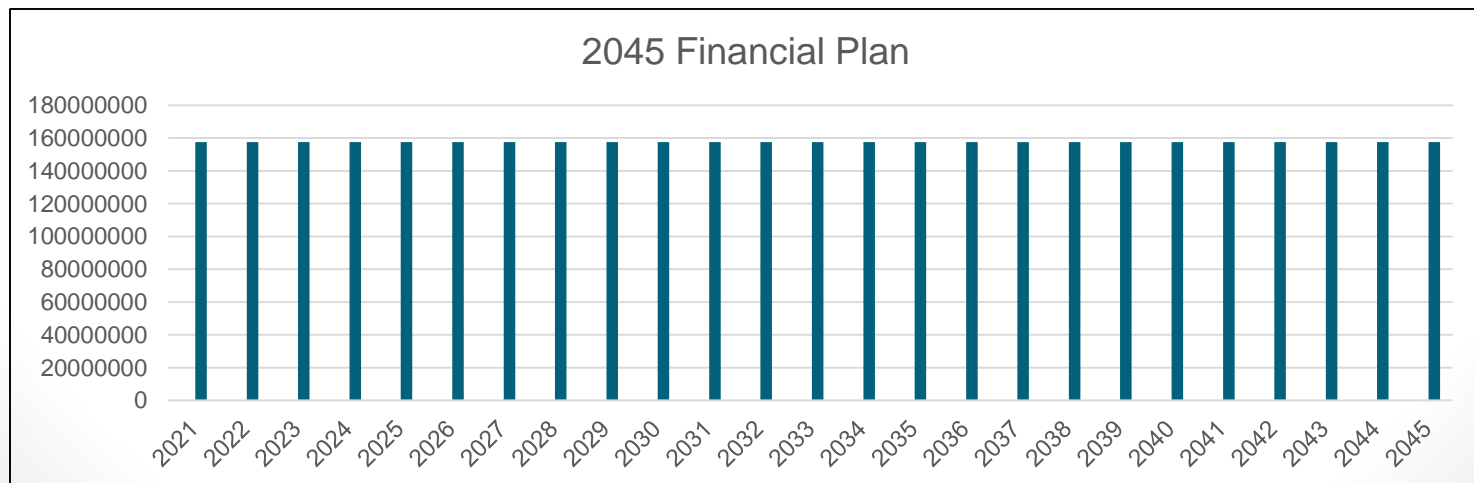
Improve Multimodal Transportation

Maintain the Region's Infrastructure

Develop a More Equitable Transportation System

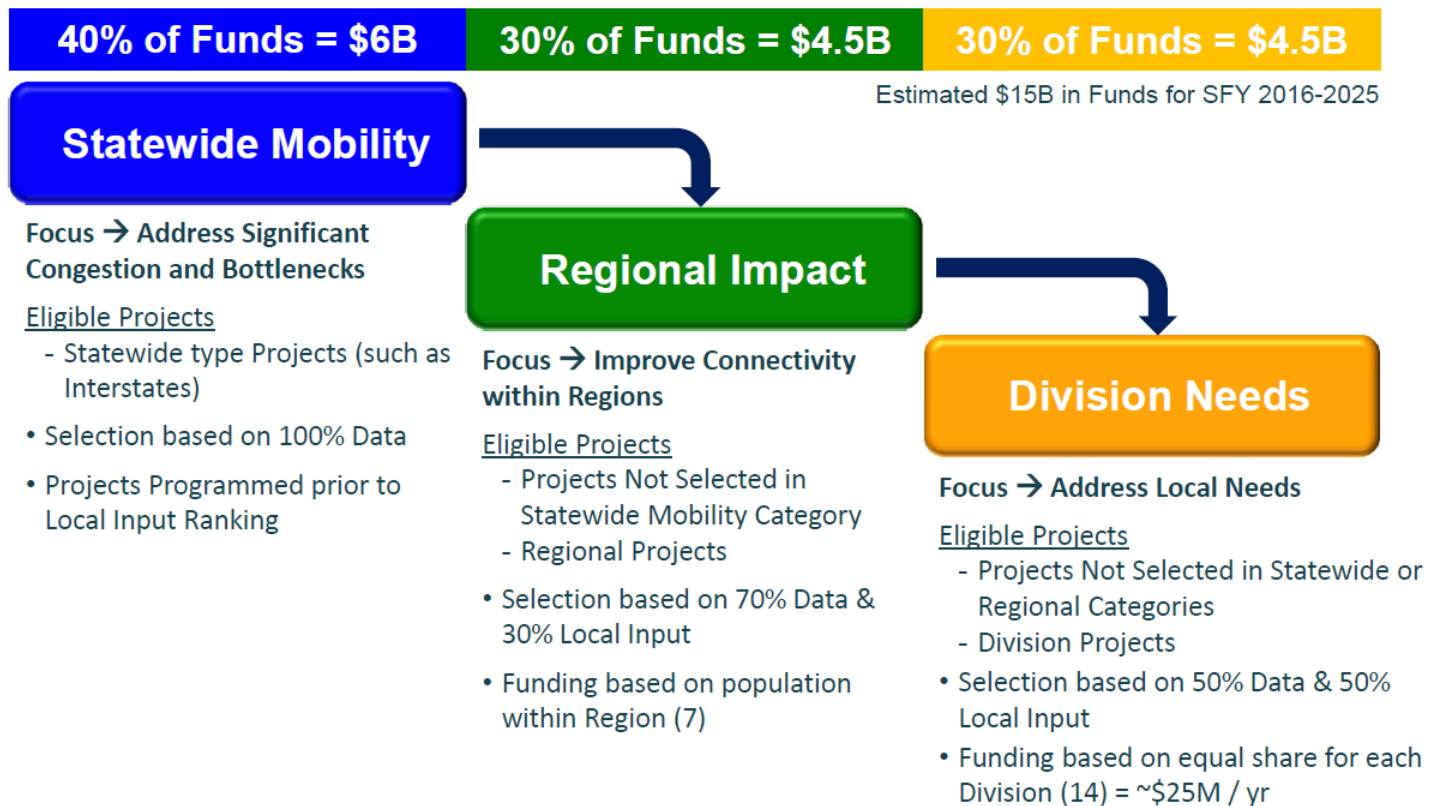
2045 Financial Plan

- The Financial Plan mirrors SPOT (assumes the current distribution of transportation funds will continue)
- Transportation Revenues will keep up with inflation (more optimistic than last MTP)
 - Federal transportation funds now borrow heavily from the general fund
 - State transportation funds recently received transfers and closed loopholes on Highway Trust Fund revenues



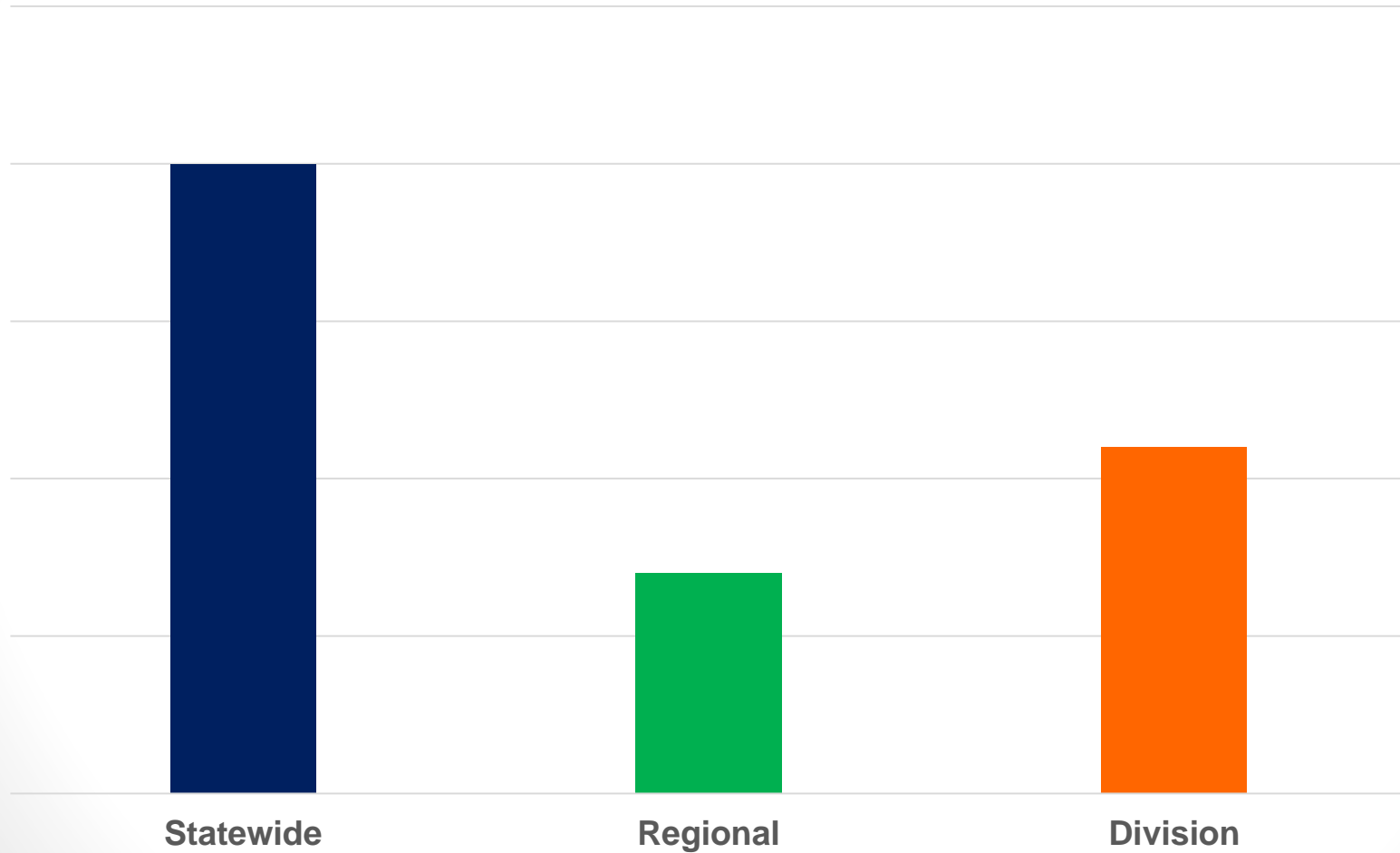
Project Prioritization (AKA SPOT)

How the STI Works

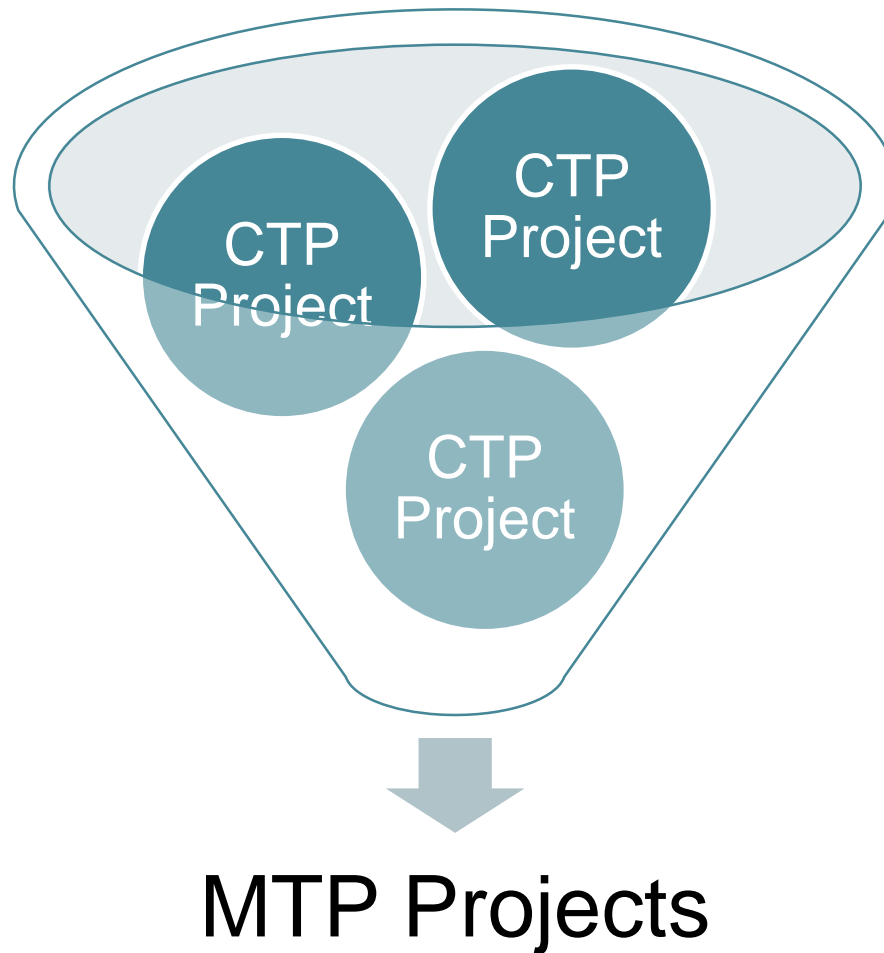


Financial Plan

MTP Financial Plan



Project Selection



Project Selection

1

Statewide Mobility Projects

- Interstates
- US 23/74

2

Regional Impact Projects

- US Highways
- NC Highways
- Anything from Statewide

3

Division Needs Projects

- Secondary Roads
- Anything from Statewide or Regional tiers

Project Selection

1

Statewide Mobility Projects

- Congestion
- Freight
- Safety

2

Regional Impact Projects

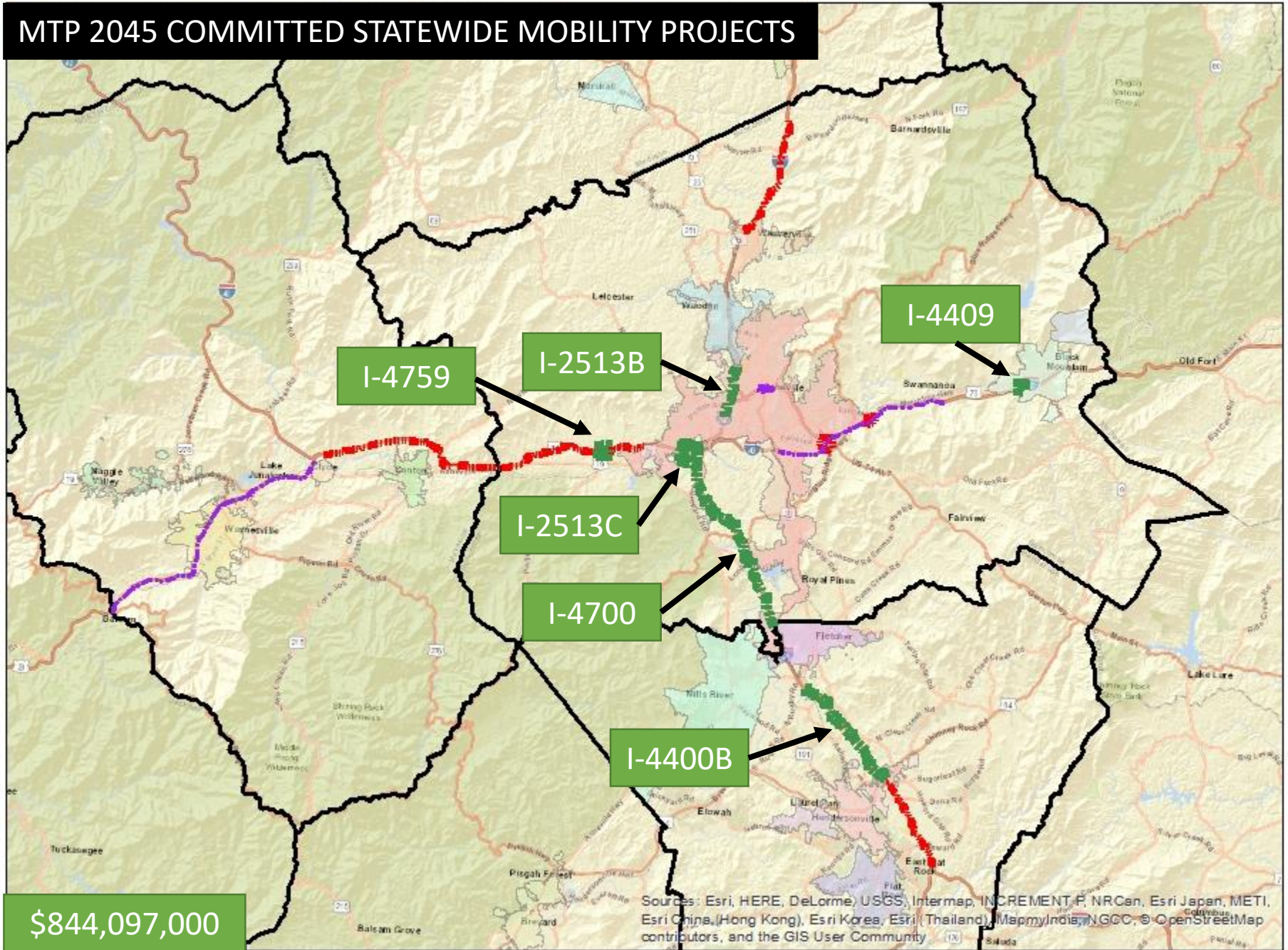
- Safety
- Multimodal
- Congestion

3

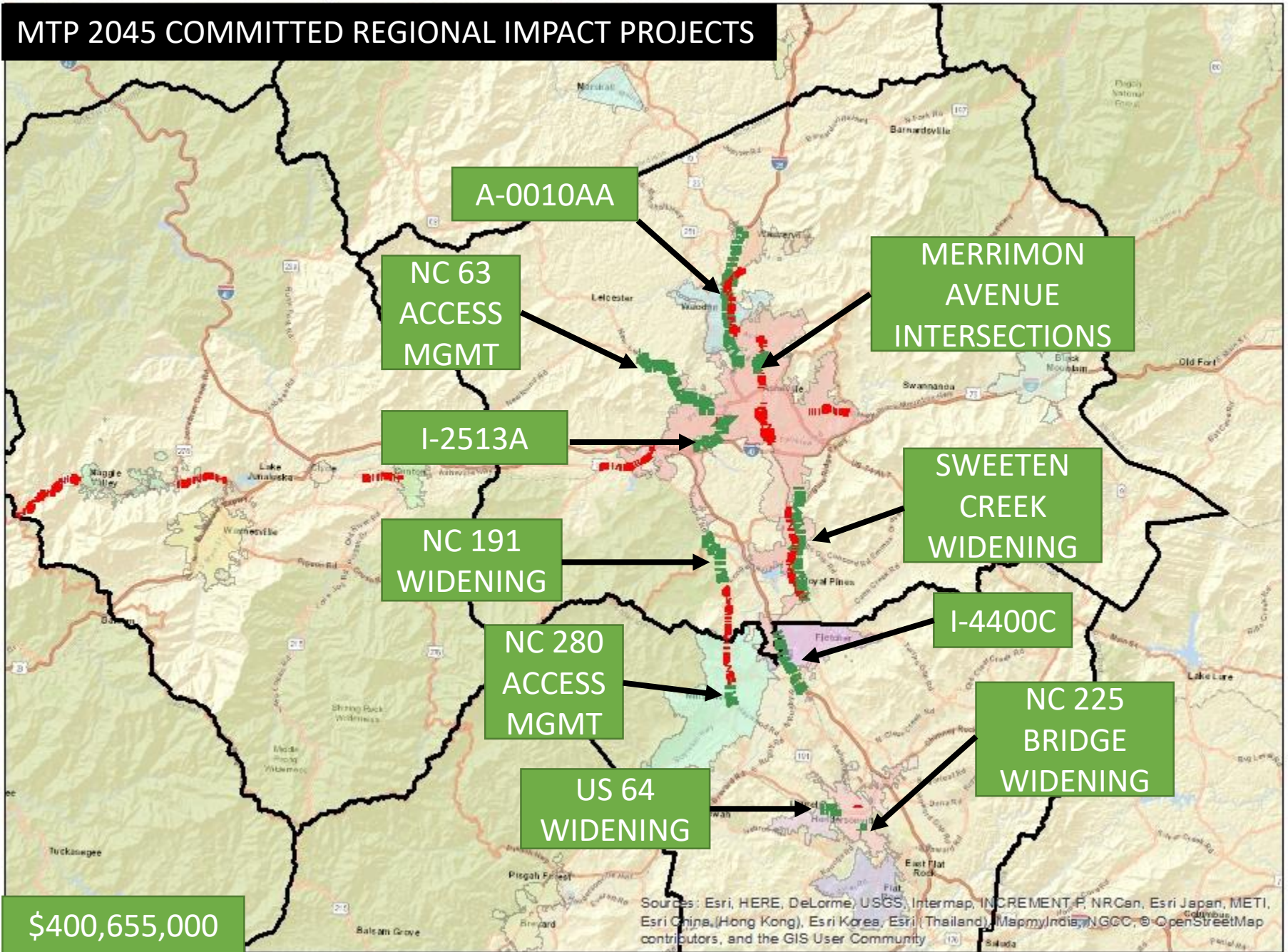
Division Needs Projects

- Multimodal
- Environment
- Transit

MTP 2045 COMMITTED STATEWIDE MOBILITY PROJECTS



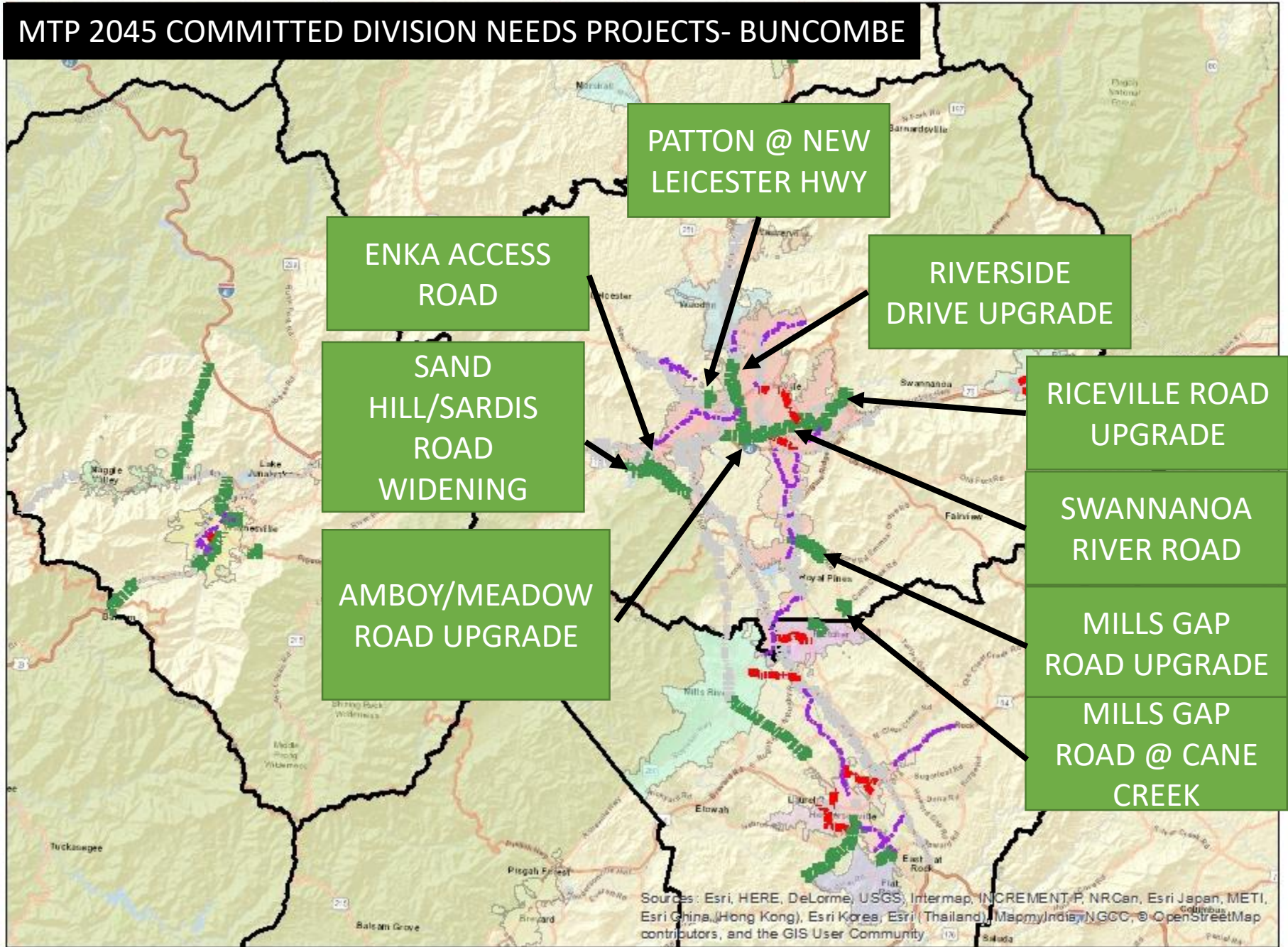
MTP 2045 COMMITTED REGIONAL IMPACT PROJECTS



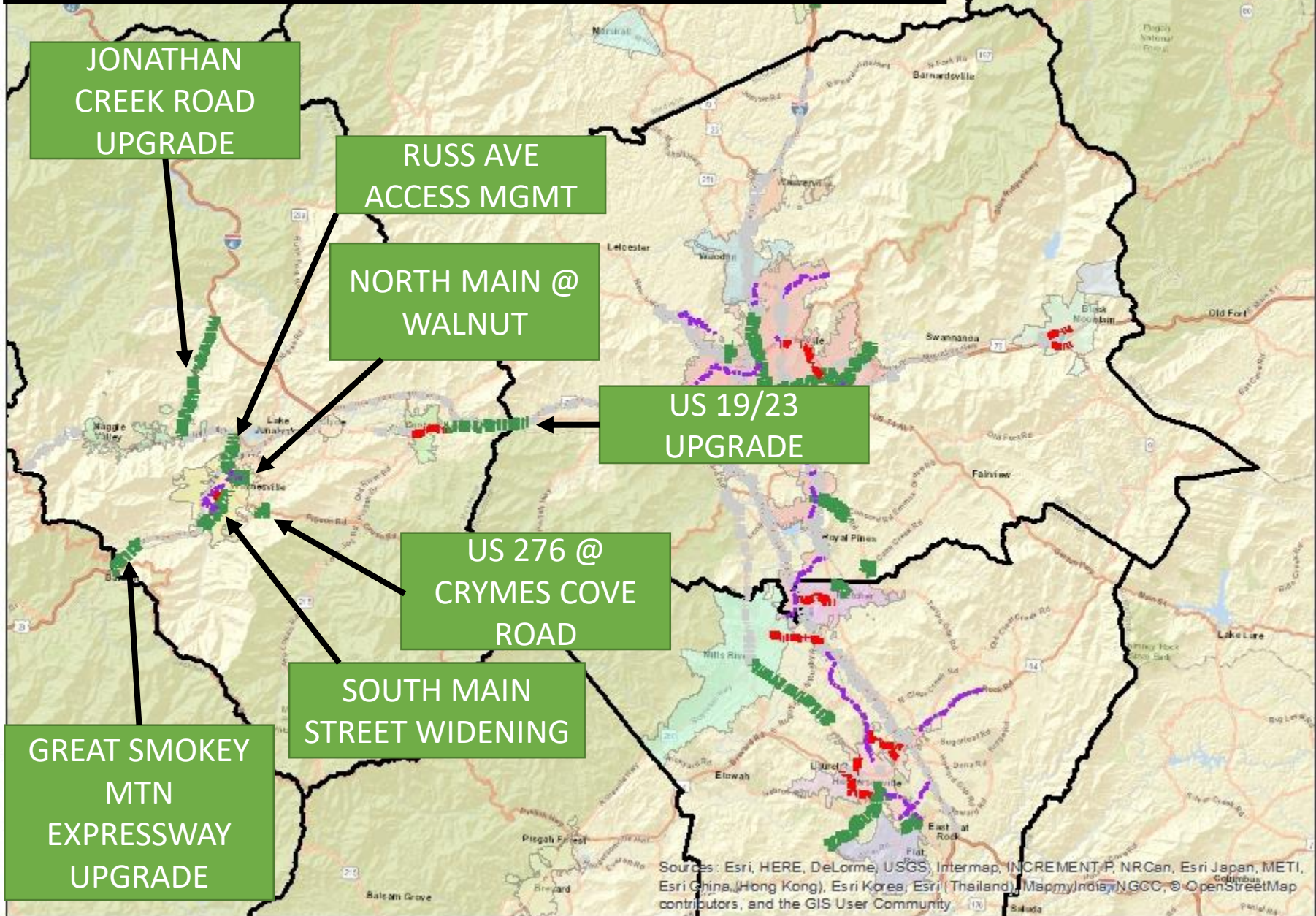
\$400,655,000

Sources: Esri, HERE, DeLorme, USGS, Intermap, INCREMENT P, NRCan, Esri Japan, METI, Esri China (Hong Kong), Esri Korea, Esri (Thailand), MapmyIndia, NGCC, OpenStreetMap contributors, and the GIS User Community

MTP 2045 COMMITTED DIVISION NEEDS PROJECTS- BUNCOMBE

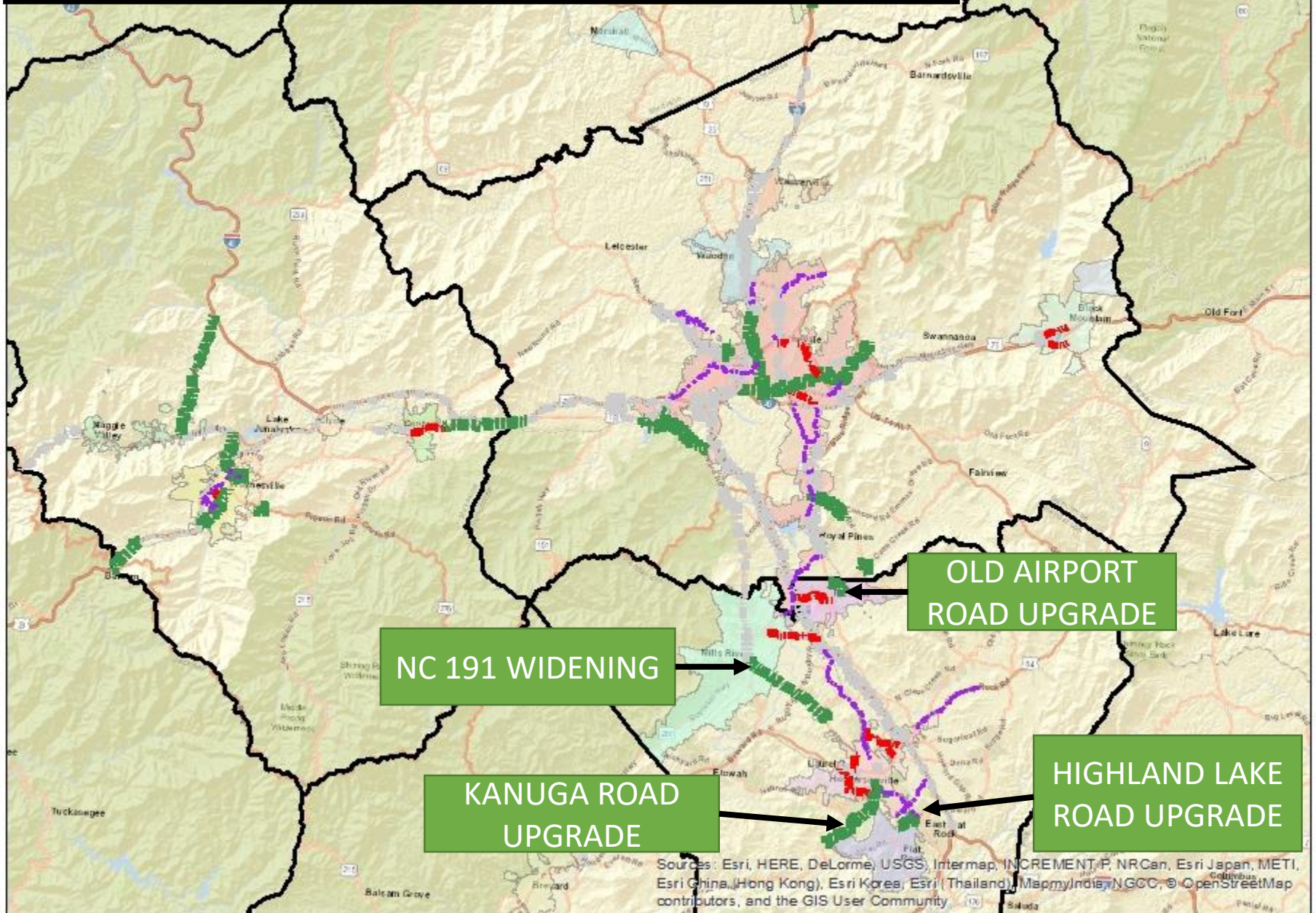


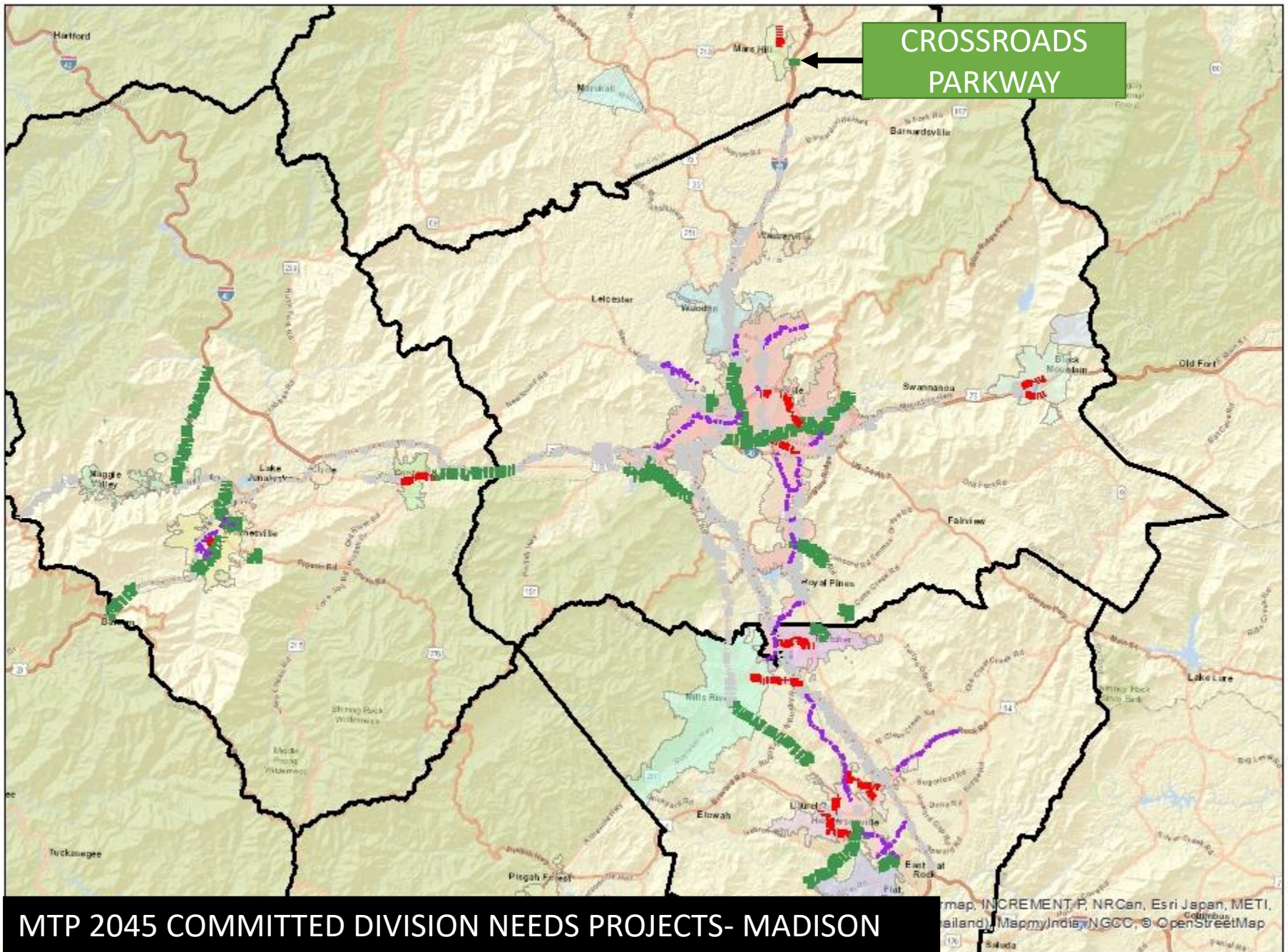
MTP 2045 COMMITTED DIVISION NEEDS PROJECTS- HAYWOOD



Sources: Esri, HERE, DeLorme, USGS, Intermap, INCREMENT P, NRCan, Esri Japan, METI, Esri China (Hong Kong), Esri Korea, Esri (Thailand), MapmyIndia, NGCC, OpenStreetMap contributors, and the GIS User Community

MTP 2045 COMMITTED DIVISION NEEDS PROJECTS- HENDERSON

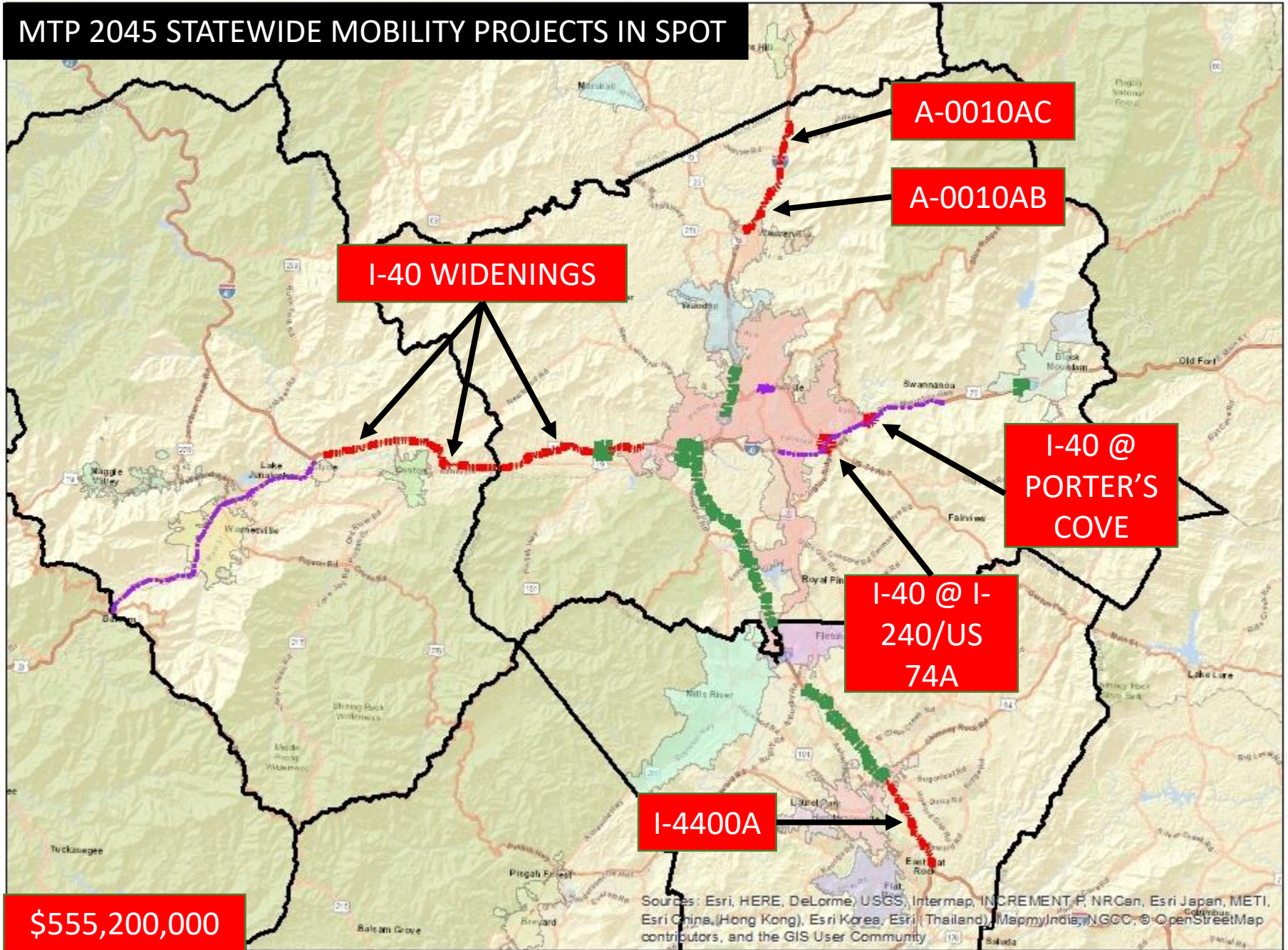




MTP 2045 COMMITTED DIVISION NEEDS PROJECTS- MADISON

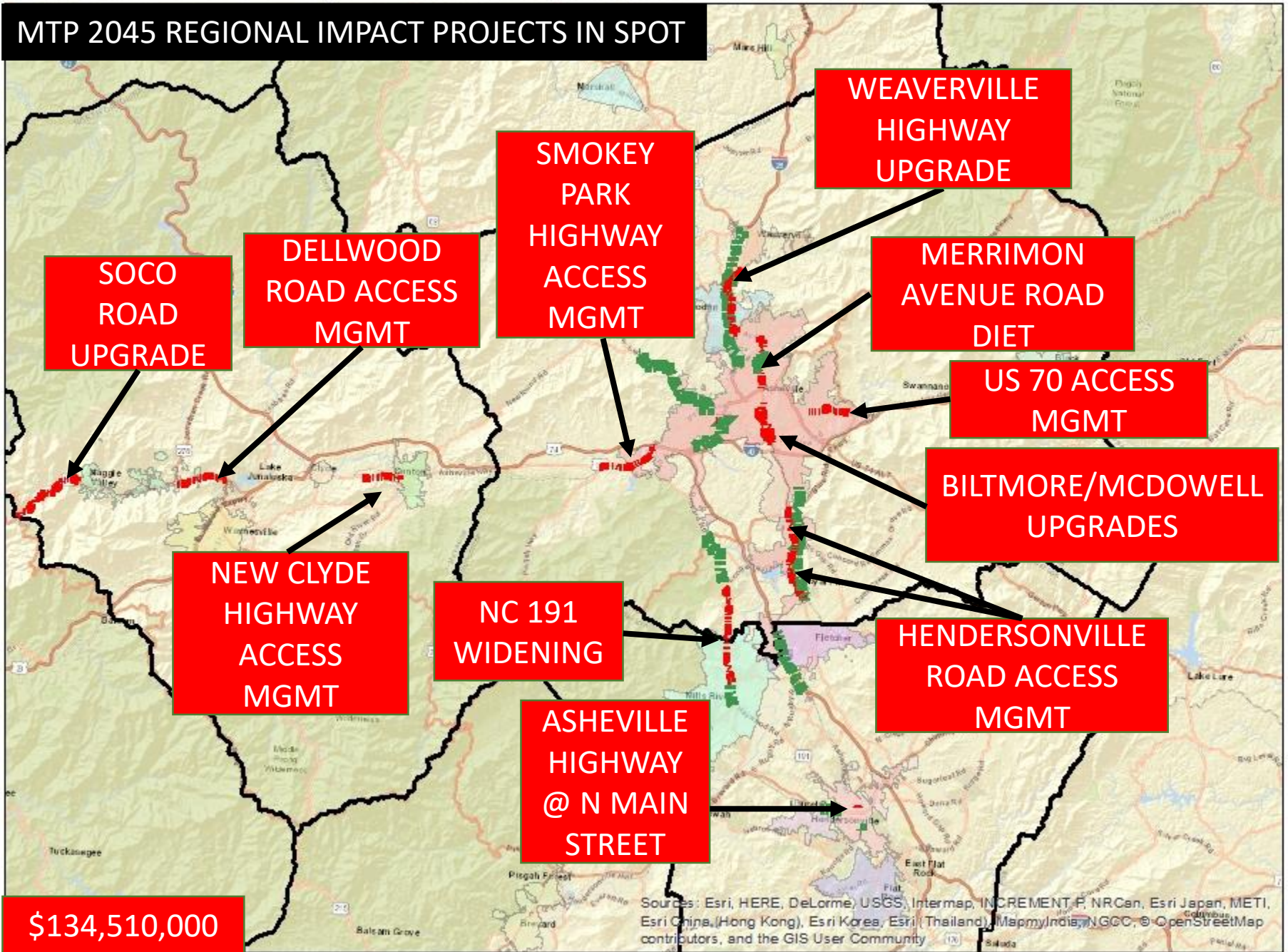
Map, INCREMENT, P, NRCan, Esri Japan, METI, Silland, MapmyIndia, NGCC, OpenStreetMap

MTP 2045 STATEWIDE MOBILITY PROJECTS IN SPOT

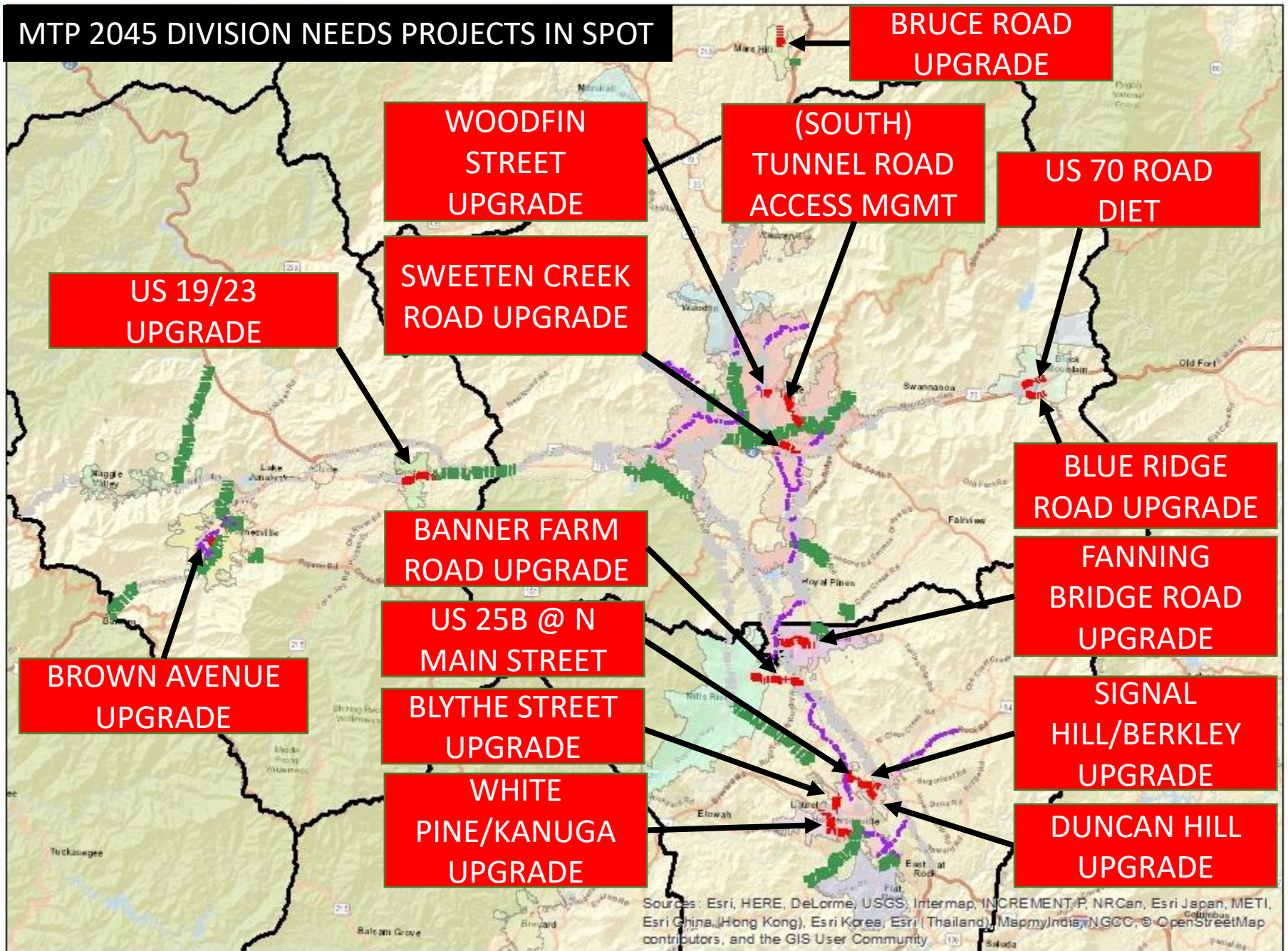


Sources: Esri, HERE, DeLorme, USGS, Intermap, INCREMENT P, NRCan, Esri Japan, METI, Esri China (Hong Kong), Esri Korea, Esri (Thailand), MapmyIndia, NGCC, OpenStreetMap contributors, and the GIS User Community

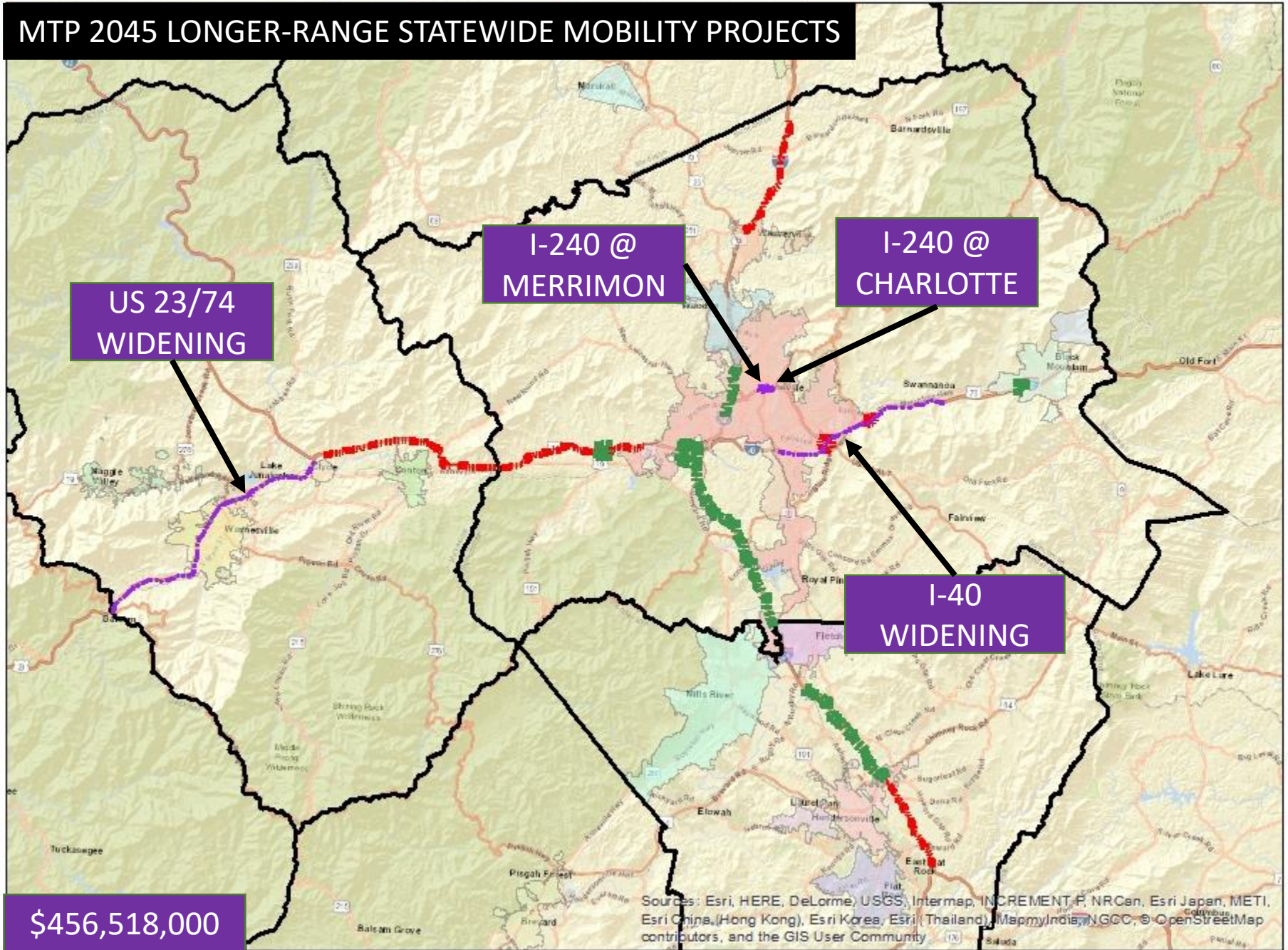
MTP 2045 REGIONAL IMPACT PROJECTS IN SPOT



MTP 2045 DIVISION NEEDS PROJECTS IN SPOT



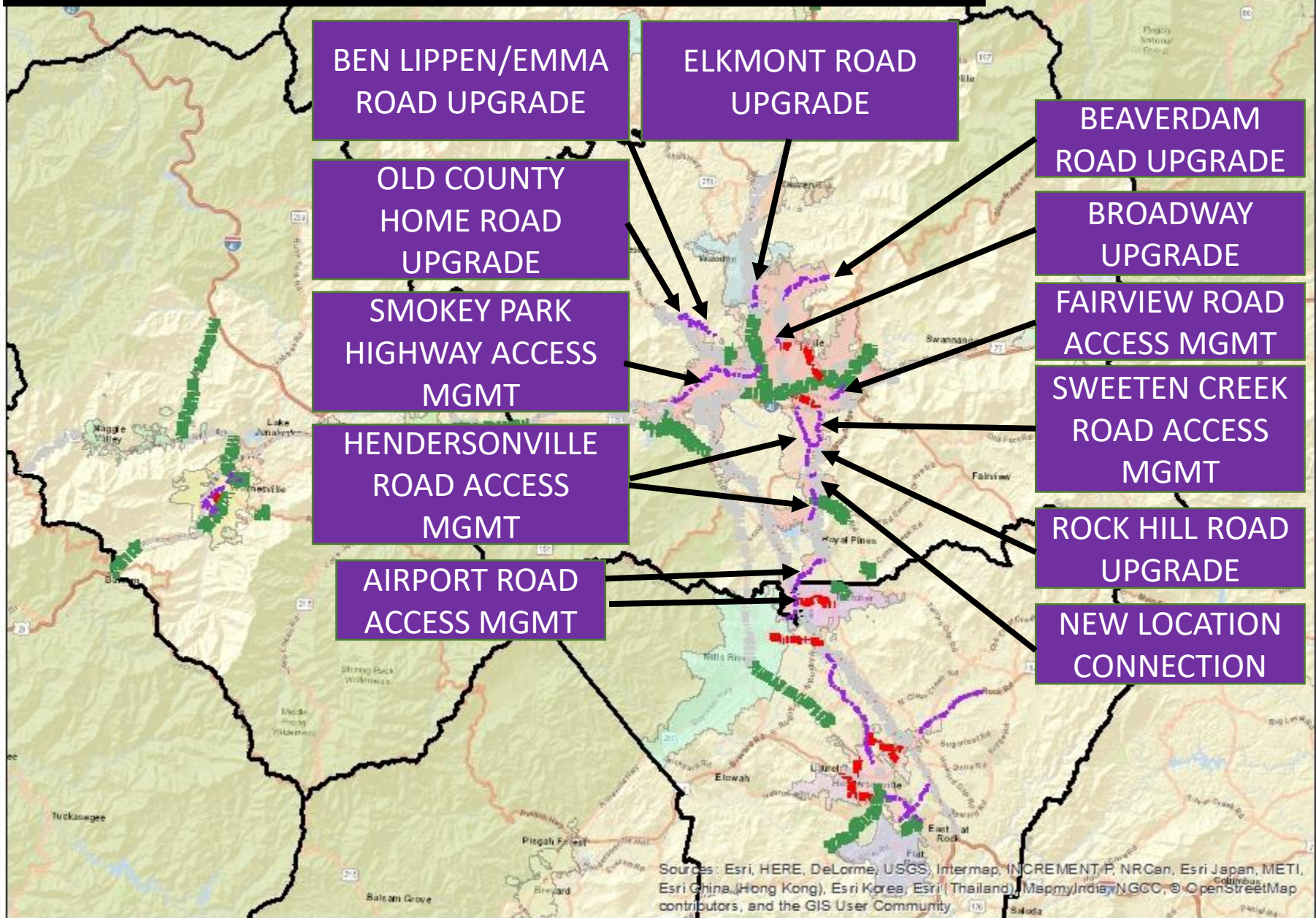
MTP 2045 LONGER-RANGE STATEWIDE MOBILITY PROJECTS



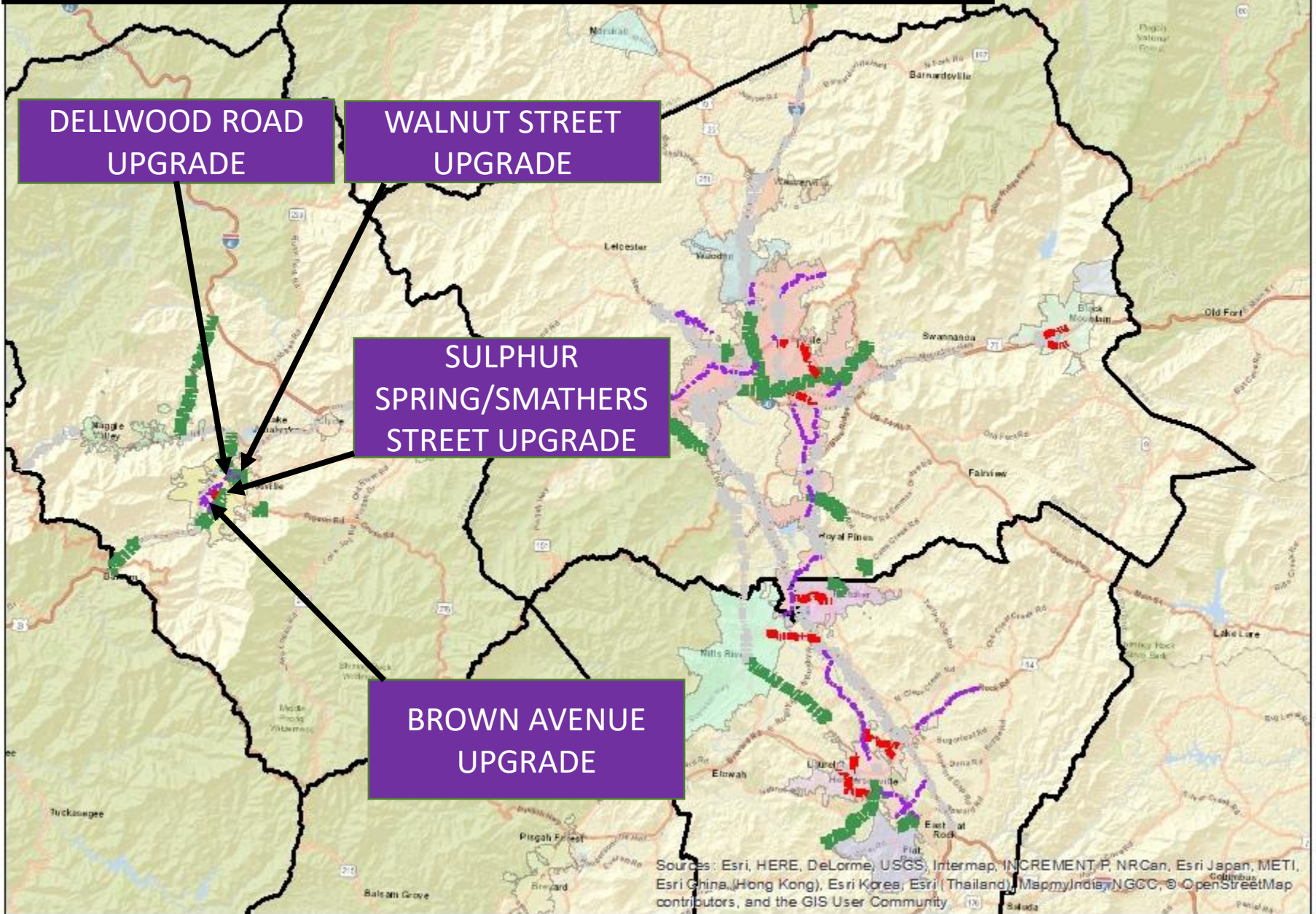
\$456,518,000

Sources: Esri, HERE, DeLorme, USGS, Intermap, INCREMENT P, NRCan, Esri Japan, METI, Esri China (Hong Kong), Esri Korea, Esri (Thailand), MapmyIndia, NGCC, OpenStreetMap contributors, and the GIS User Community

MTP 2045 LONGER-TERM DIVISION NEEDS PROJECTS- BUNCOMBE

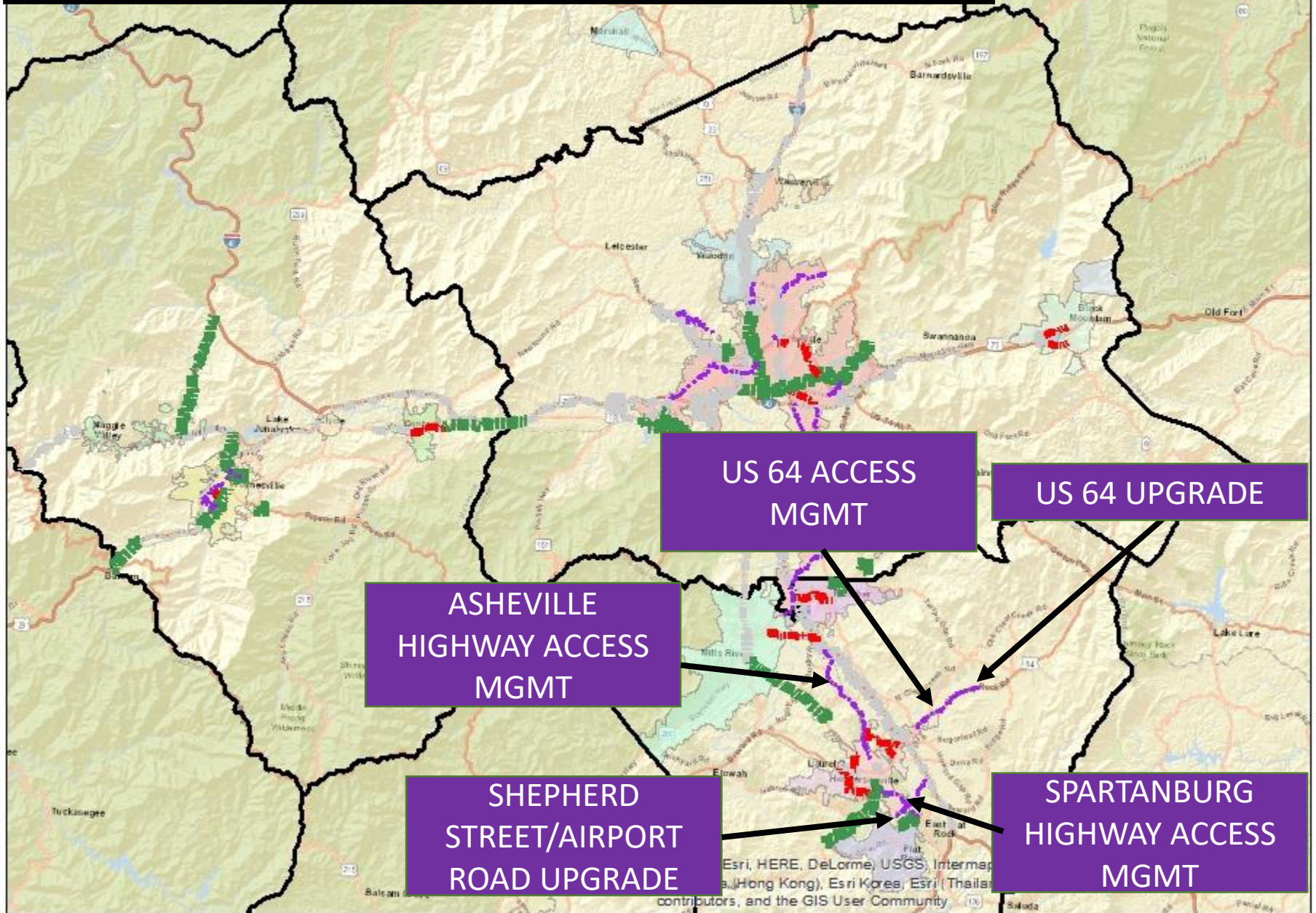


MTP 2045 LONGER-TERM DIVISION NEEDS PROJECTS- HAYWOOD



Sources: Esri, HERE, DeLorme, USGS, Intermap, INCREMENT P, NRCan, Esri Japan, METI, Esri China (Hong Kong), Esri Korea, Esri (Thailand), MapmyIndia, NGCC, OpenStreetMap contributors, and the GIS User Community

MTP 2045 LONGER-TERM DIVISION NEEDS PROJECTS- HENDERSON



US 64 ACCESS
MGMT

US 64 UPGRADE

ASHEVILLE
HIGHWAY ACCESS
MGMT

SHEPHERD
STREET/AIRPORT
ROAD UPGRADE

SPARTANBURG
HIGHWAY ACCESS
MGMT

Questions?

