

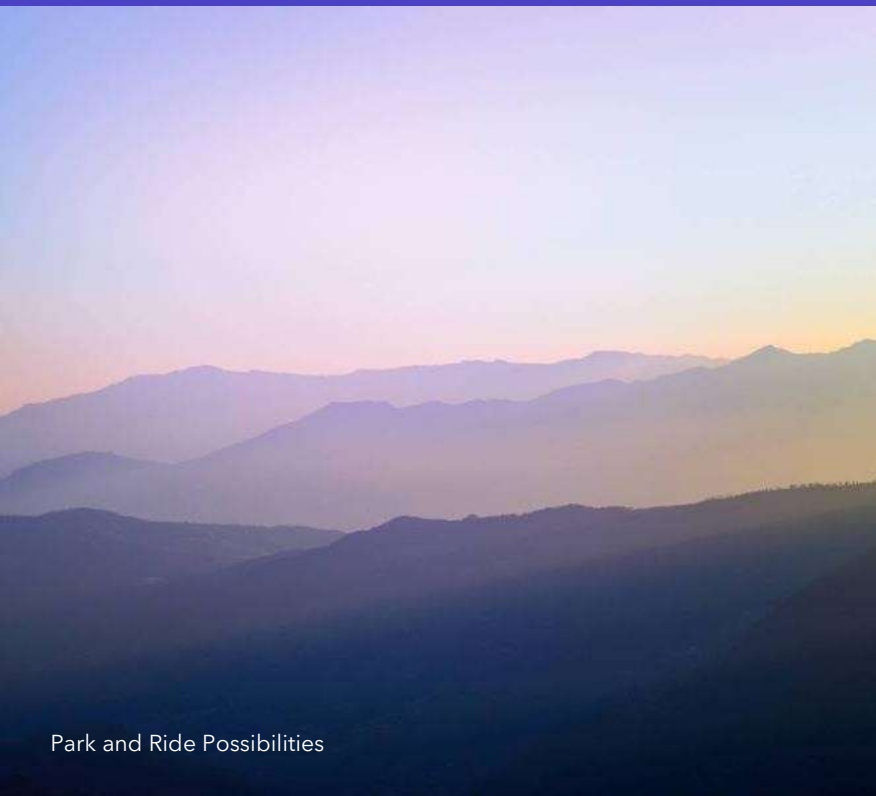
Updating and Expanding Options

Jon Barsanti Jr.

Transportation Demand Management Planner

Land of Sky Regional Council





Park and Ride Possibilities

“Park-and-Ride facilities are mainly utilized by commuters as a convenient means in the pursuit of ridesharing, carpooling, vanpooling, bus, or rail transit in order to reach their commute destination.”

Florida Department of Transportation

Process of Selecting Potential Park and Ride Locations

1. Plan Review

2. Literature Review

3. Data Collection

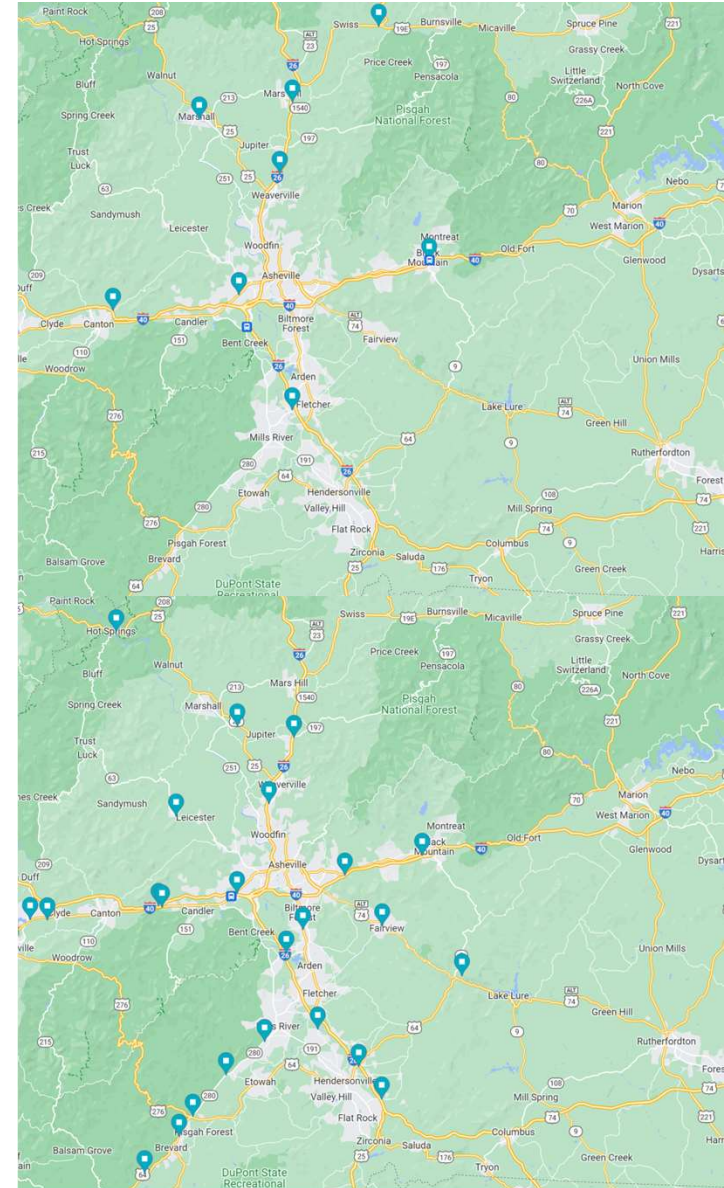
4. Scorecard Created

- Reviewed the Congestion Management Plan (2018)
- Reviewed the Comprehensive Economic Development Strategy (2020)
- Researched documents from multiple sources including Virginia DOT and Florida DOT
- Collected Data from multiple sources
 - Environmental Justice Data
 - Census on the Map Data (Home to Work, Work to Home, Outflow)
 - Housing and Employment Data (Housing Units, Employees.)
 - Combined data into one spreadsheet
 - Analyzed the data

Looking for More of the same plus Park and Bike

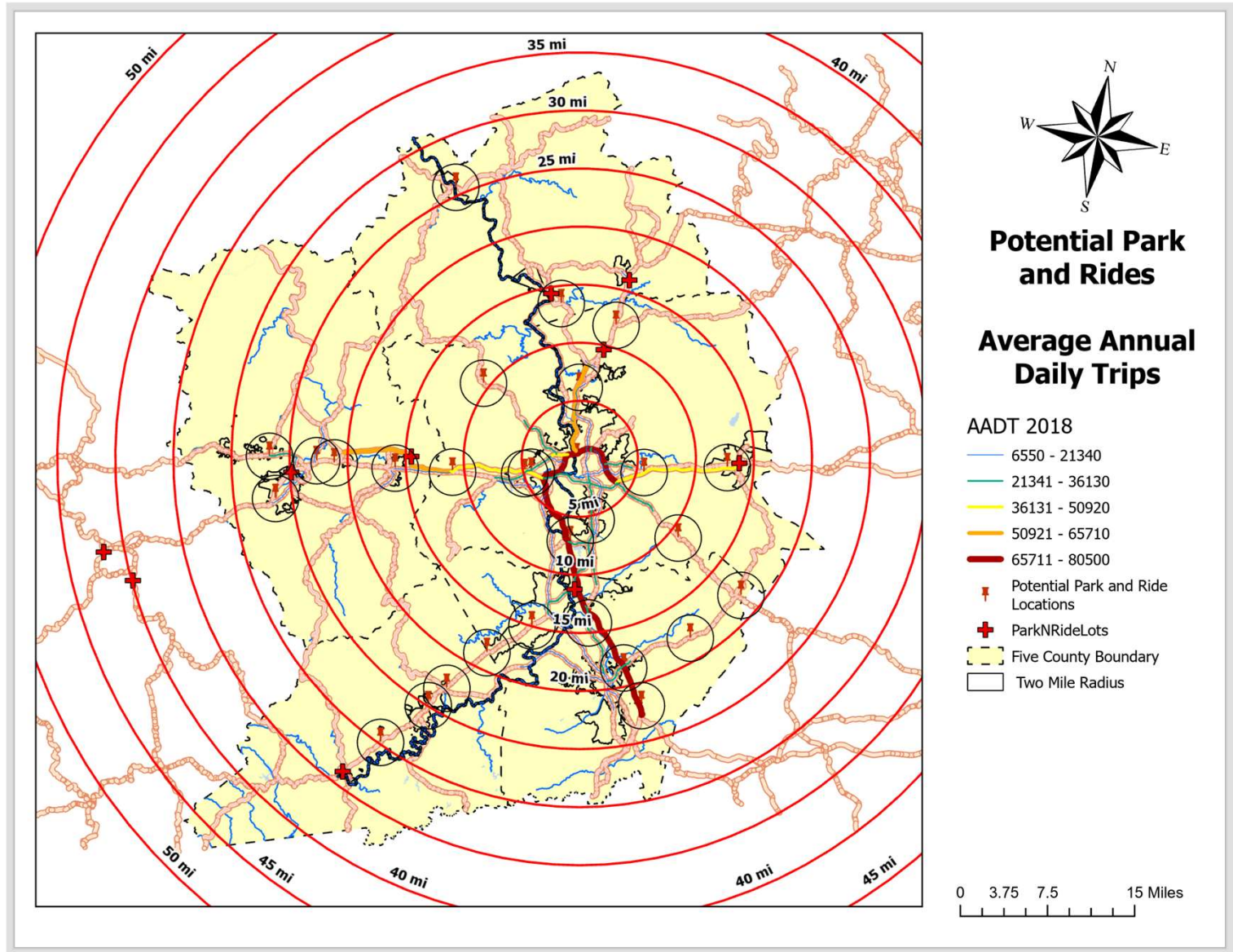
Park and Ride Possibilities

- Park and Pool locations at Waynesville, Canton, Weaverville, and Mars Hill.
- Park and Rides for Black Mountain, South Asheville, and Rosman.
- Unofficial Park and Charge and Ride at Asheville Outlet Mall
- Looking to add more locations to
 - Reduce Congestion
 - Encourage Carpooling
 - Support Transit

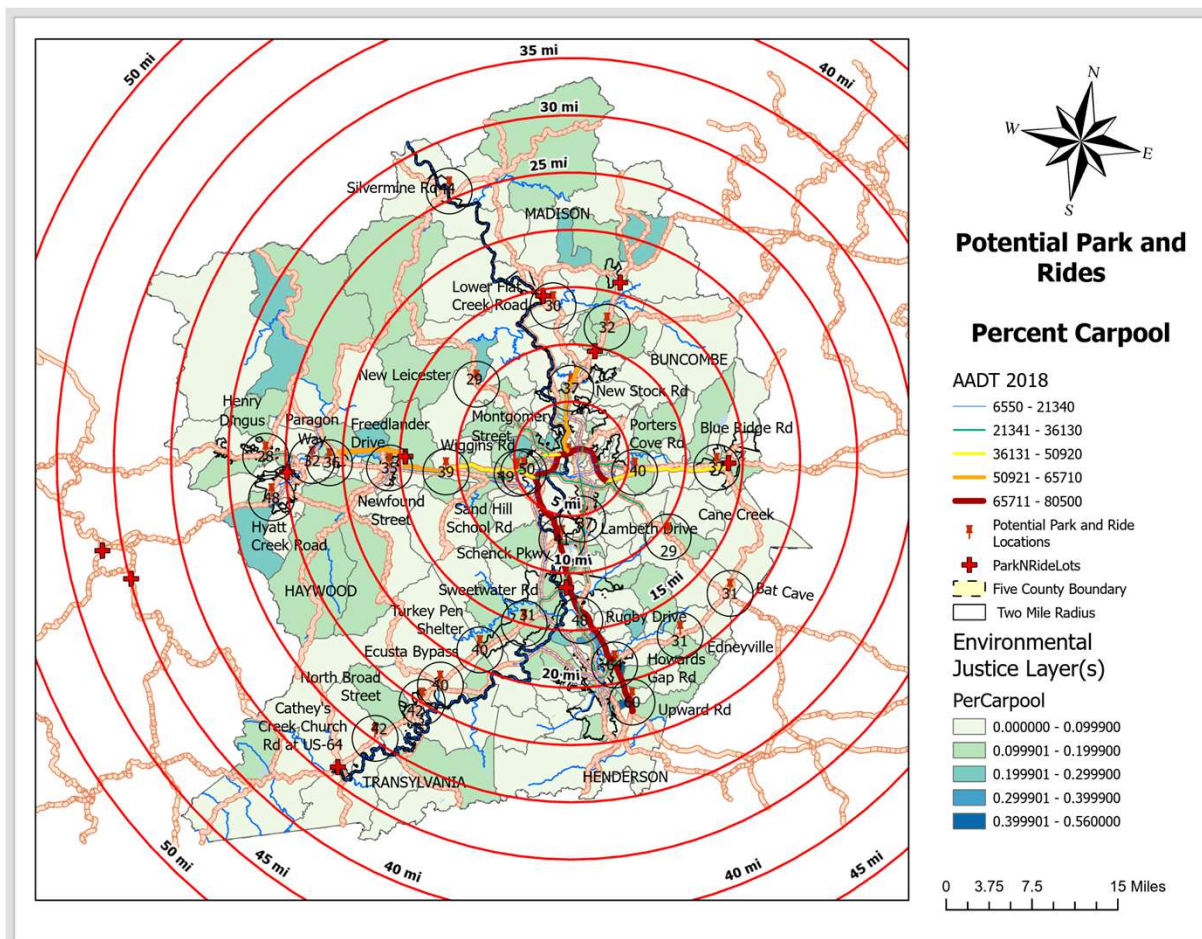


Congestion Corridors

Primarily
I-40 and
Future I-26

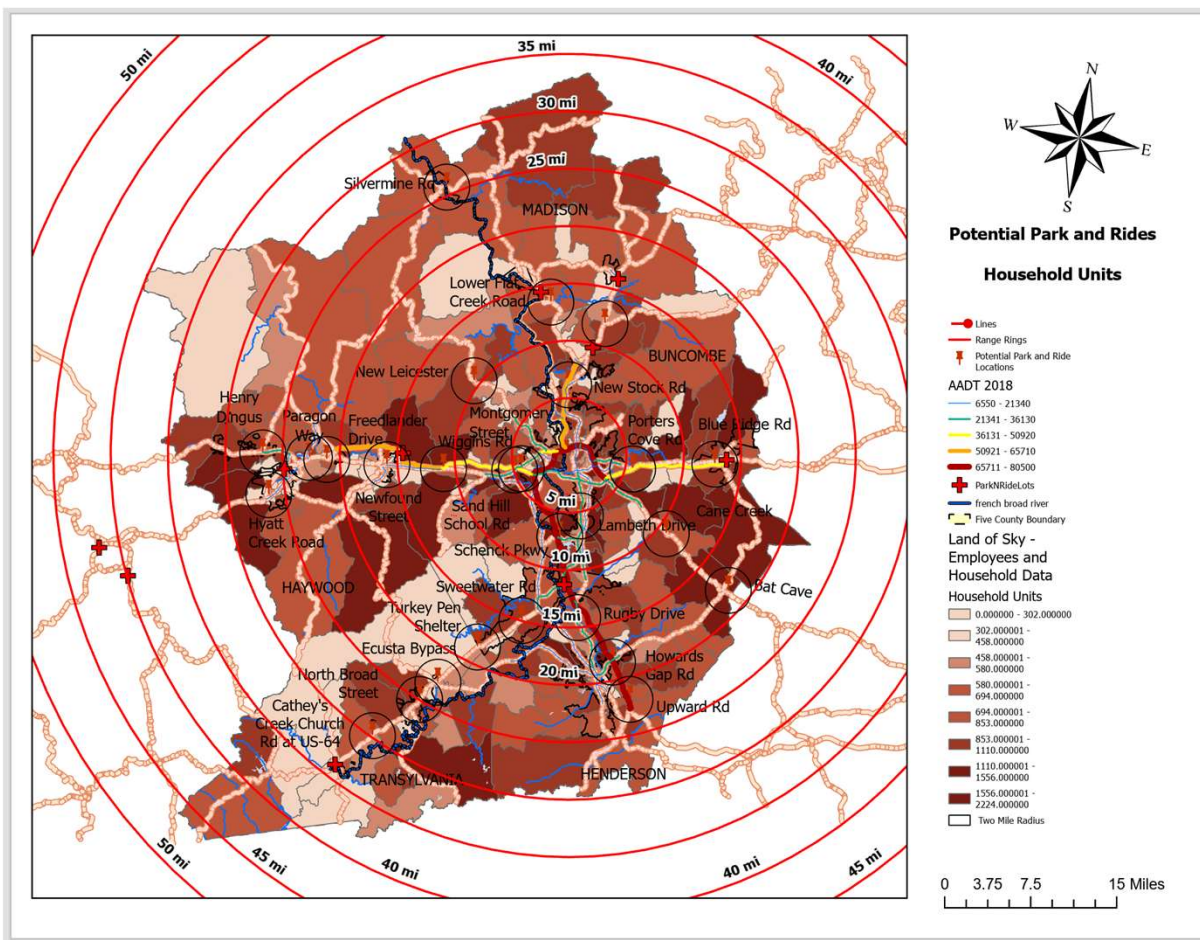


Examined The Areas Using Environmental Justice Data



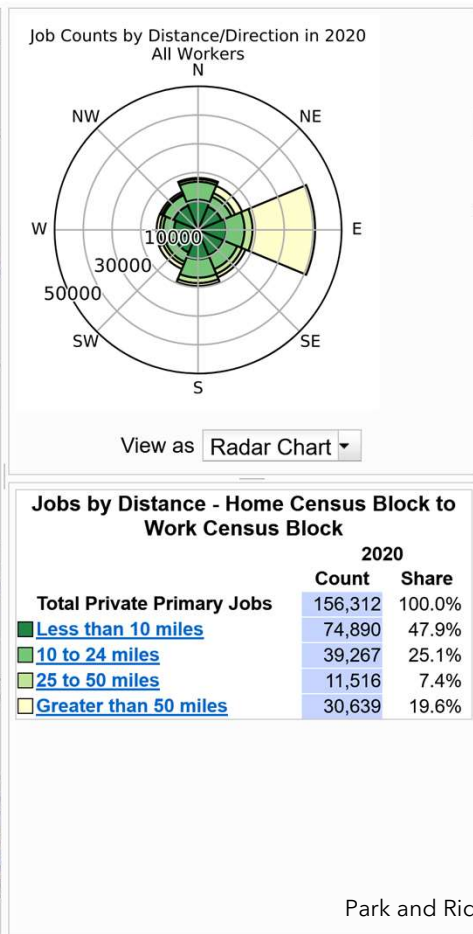
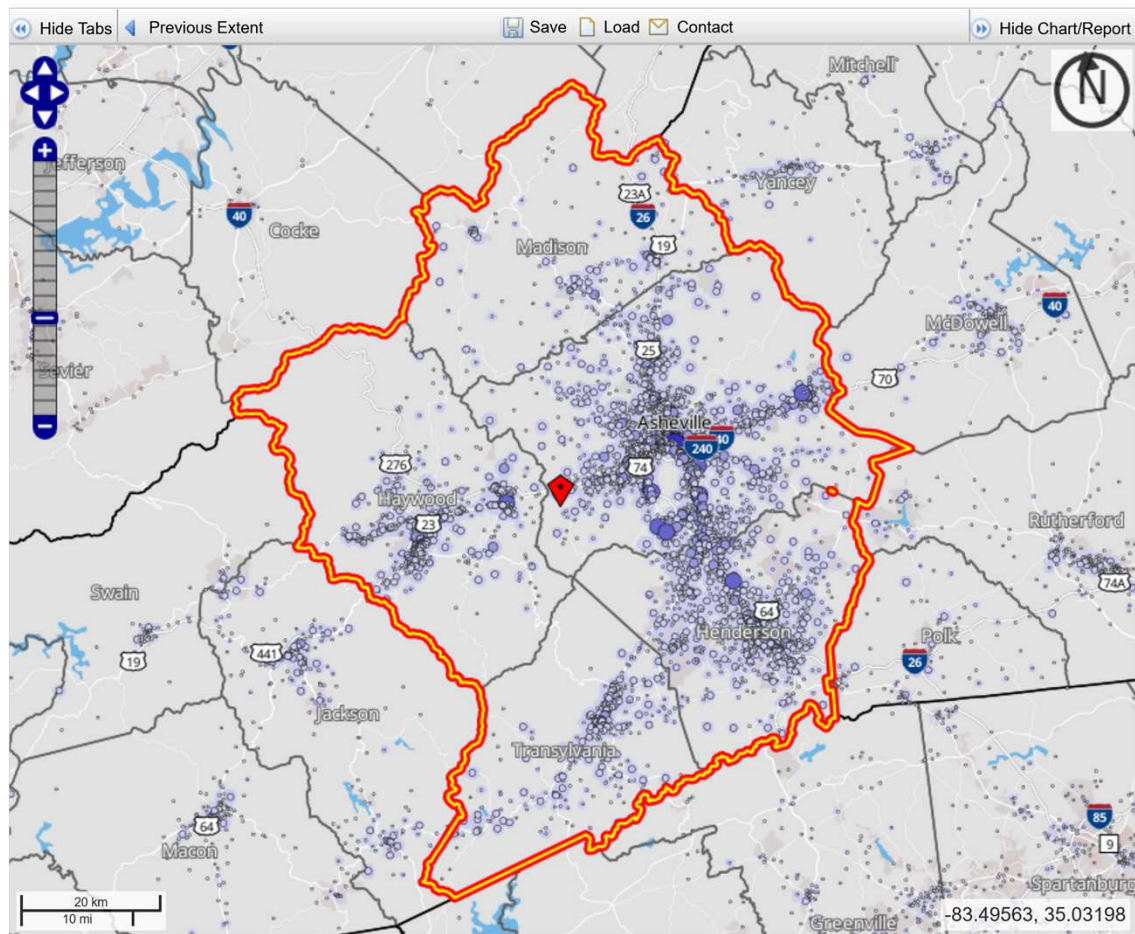
- Examined Different Groups based on the Literature of who Uses and Who needs Park and Ride Facilities
- Carpoolers
- Minorities
- Living Under Poverty Level
- Those over 65 Years of Age
- Zero Vehicle Homes

Examined The Areas Using Employment and Household Data



- Other Regions use data regarding
- Total Units in Service Area
- Units per Square Mile
- Employees at CBD
- Employees per Square Mile

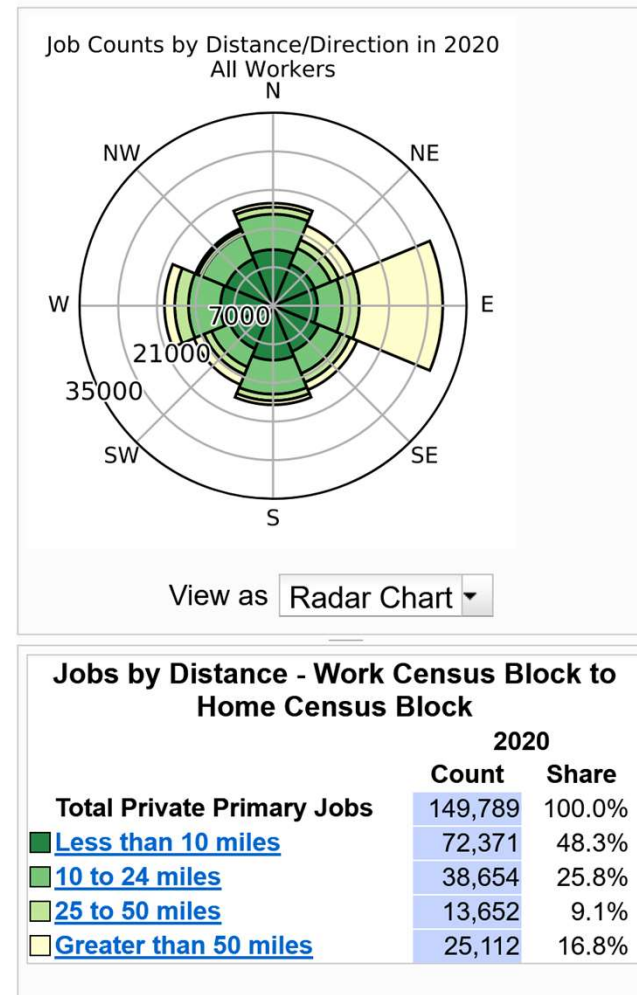
Examined The Areas Using Census Data



Home to work data

48% Drive less than 10 Miles

17% Drive 50 Miles or more

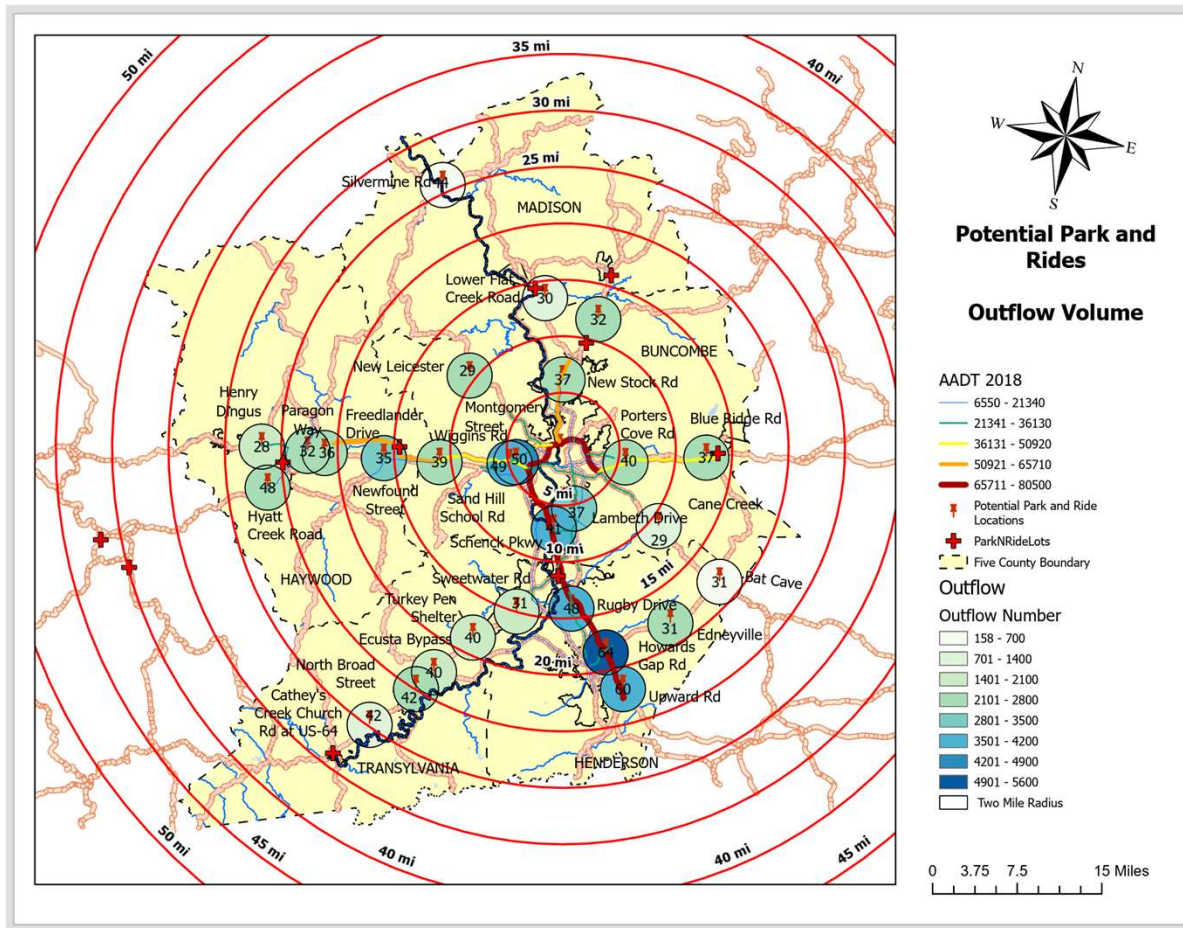


Developed a Ranking System

		Carpooling %		Worker Outflow		Proximity to Existing Park and Rides		Proximity to Job Centers		AADT		HHU		Percentage 10 Mi+		Zero Vehicle Households		Low Income		Minority %		
	Proposed Location	Carpooling %	Carpooling Score	Worker Outflows	Worker Outflow Score	Proximity to Existing Park and Rides	Proximity Score	Proximity to Job Centers	Proximity to CBD Score	AADT	AADT Score	HHU	HHU Score	10 Mi+	10 Mi+ Score	ZVH	ZVH Score	Low Income %	Low Income Score	Minority %	Minority Score	Total Score
A2	Howard's Gap (2)	11.28%	7	7,328	7	6	3	18.5	6	66,500	8	10,251	9	32.4%	4	8.69%	10	14.93%	4	22.86%	7	64
A3	Upward Rd (3)	15.59%	10	5,797	6	11.5	4	22.1	7	66,500	8	6,719	6	58.7%	4	3.21%	3	14.57%	4	28.53%	9	60
A21	Rugby PNR	11.54%	7	5,433	5	3	1	14.4	4	80,500	10	6,792	6	51.5%	4	3.95%	4	8.92%	2	20.81%	6	48
A17	Hyatt Creek Rd (15)	11.34%	7	3,422	3	2.7	1	26.1	9	30,000	3	4,434	4	61.5%	5	7.15%	8	13.43%	4	13.15%	4	48
A10	Est 444Montgomery St (15A)	7.76%	4	10,187	10	11	4	4	0	80,500	10	11,715	10	36.2%	1	2.86%	3	10.44%	2	23.23%	7	50
A11	Sand Hill School Rd (10B)	8.03%	4	9,395	9	10	3	4.6	0	80,500	10	10,247	9	37.7%	1	3.05%	3	11.13%	3	22.87%	7	48
A8	North Broad Street (6)	5.87%	2	2,931	3	8.3	3	25	8	26,500	3	4,419	4	58.7%	5	3.87%	4	12.63%	3	28.90%	7	42
A7	Stuvenna	3.01%	1	171	0	26	10	36	8	3,393	0	196	0	81.6%	9	4.56%	5	28.01%	10	0.31%	0	44
A9	Callaway's Creek Church Rd (9)	8.90%	5	1,532	1	4	1	30	10	12,000	1	1,668	1	53.8%	4	3.83%	4	15.33%	5	32.30%	10	42
A5	Scout's Bypass (5)	5.45%	2	2,516	2	11.5	4	22.8	7	54,000	7	3,453	3	60.0%	5	3.27%	3	8.95%	2	17.63%	5	40
A4	Turkey Pen Creek (4)	11.07%	7	2,739	3	9.3	3	18.4	6	39,500	5	2,855	2	62.6%	6	2.88%	3	9.68%	2	15.95%	5	40
A12	Wiggins Rd (11)	10.56%	6	3,349	3	4	1	10.8	3	39,500	5	3,426	3	67.3%	7	4.17%	4	15.41%	5	9.37%	5	38
A23	Schenck Parkway (20B)	4.99%	2	8,837	8	4.2	1	7	1	66,500	8	10,985	8	56.4%	1	3.77%	4	4.87%	0	19.83%	6	41
A1	Blue Ridge Rd	7.22%	3	1,090	3	1	0	13	3	39,500	5	3,934	3	66.6%	6	6.14%	7	5.92%	0	18.23%	6	37
A19	Porter's Cove Rd (17)	6.19%	3	6,985	7	8.2	3	6	1	54,000	7	7,892	7	34.5%	0	3.33%	3	12.33%	3	21.74%	7	40
A14	Frederick (13A)	9.43%	5	3,136	3	3.7	1	20.8	6	54,000	7	3,503	3	60.3%	5	2.41%	2	8.57%	2	7.69%	2	36
A13	Newfound (Street)(12)	9.80%	6	3,736	4	2	0	15.5	4	54,000	7	4,303	4	37.2%	1	4.64%	5	10.97%	3	8.61%	3	35
A22	Lambeth (Sweatman Creek) (20A)	5.80%	2	8,215	8	6	2	5.5	1	33,000	4	9,634	6	31.3%	0	4.63%	5	5.77%	0	23.36%	7	37
A24	Boles Cove Rd (21)	13.58%	8	2,034	3	6	2	12	3	24,000	3	3,051	2	73.9%	8	1.58%	1	6.91%	1	8.08%	2	32
A16	Paragon Way (13B)	9.00%	5	3,217	3	2.4	1	33	7	22,050	2	4,293	3	60.0%	5	2.14%	2	7.94%	1	7.18%	2	32
A27	New Leicester	9.88%	6	1983	2	9	3	10.37	2	11000	1	4478	4	68%	7	1.00%	0	11.40%	3	5.66%	2	29
A20	Sweetwater Rd (16)	10.46%	6	2,729	3	5	1	14.9	4	19,000	2	2,944	2	53.9%	4	3.20%	3	6.24%	1	14.34%	4	31
A26	Bapt Cave (Chimney Rock Rd) (23)	6.62%	3	342	0	11.6	4	18.4	6	3,405	0	2,260	2	83.2%	10	0.91%	0	16.77%	5	4.36%	1	31
A8	New Stock Rd (8)	7.34%	3	4,634	4	3.7	1	6.25	1	55,400	7	5,296	4	45.8%	2	2.02%	1	7.70%	1	14.70%	5	31
A18	Lower Flat Creek	3.99%	0	1,140	1	6.3	2	26.5	9	9,100	1	1,260	1	75.3%	8	3.01%	3	14.76%	4	5.07%	1	30
A25	Cane Creek (22)	7.08%	3	2,181	2	8.8	3	12	3	15,500	2	5,633	5	51.6%	4	2.72%	2	10.98%	3	7.68%	2	29
A16	Henry Dings (14)	8.10%	4	2,450	2	2	0	26.5	9	22,050	2	2,772	2	61.7%	5	1.52%	1	5.16%	0	9.66%	1	28
A28	Edinville	6.48%	3	2,277	2	1.9	4	18	5	8,805	1	2,336	2	58.2%	5	0.91%	0	13.31%	4	9.20%	5	29

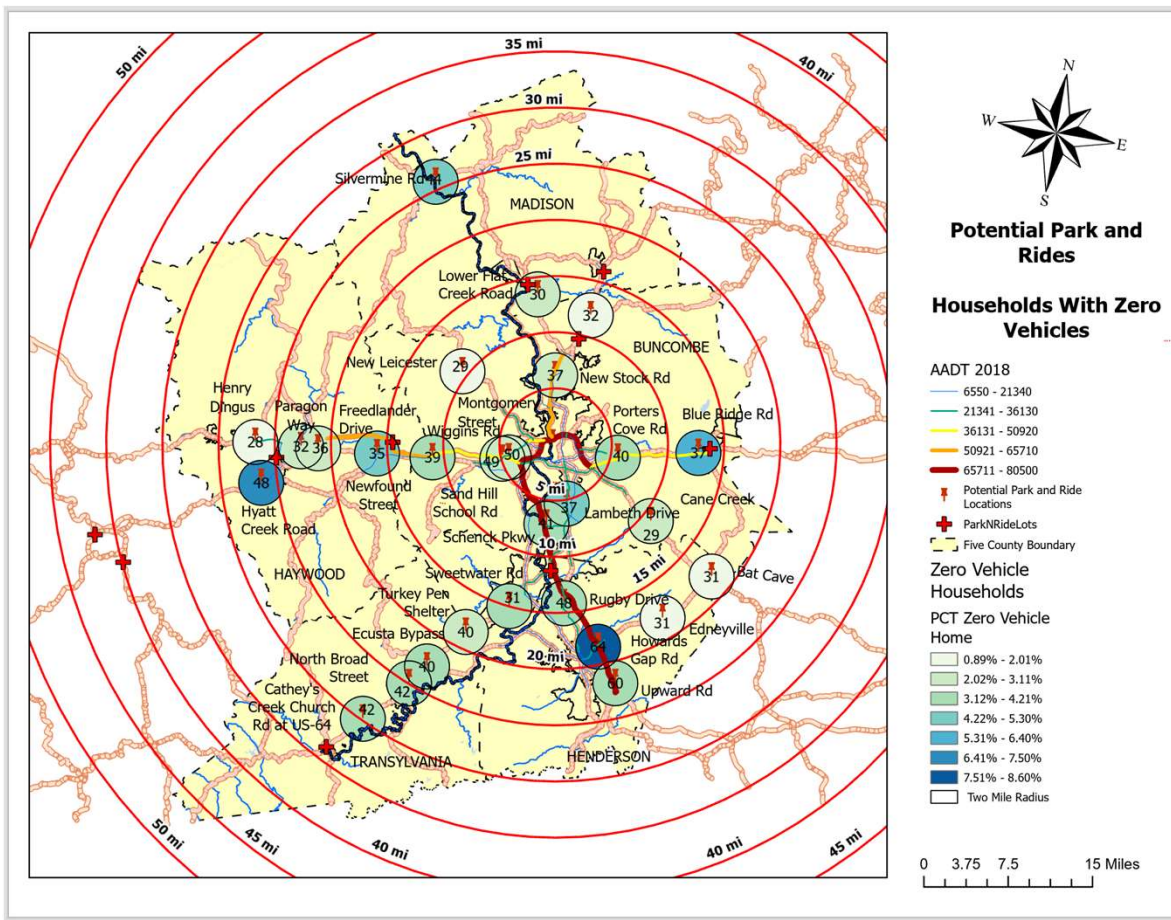
- Carpooling Households*
- Worker Outflow
- Proximity to Current PNR
- Proximity to CBD
- Annual Average Daily Traffic
- Household Units
- Driving 10+ Miles*
- Zero Vehicle Households*
- Low Income Homes*
- Minority Homes*
- *Percentage within Service Area Census Blocks

Applied the Ranking System



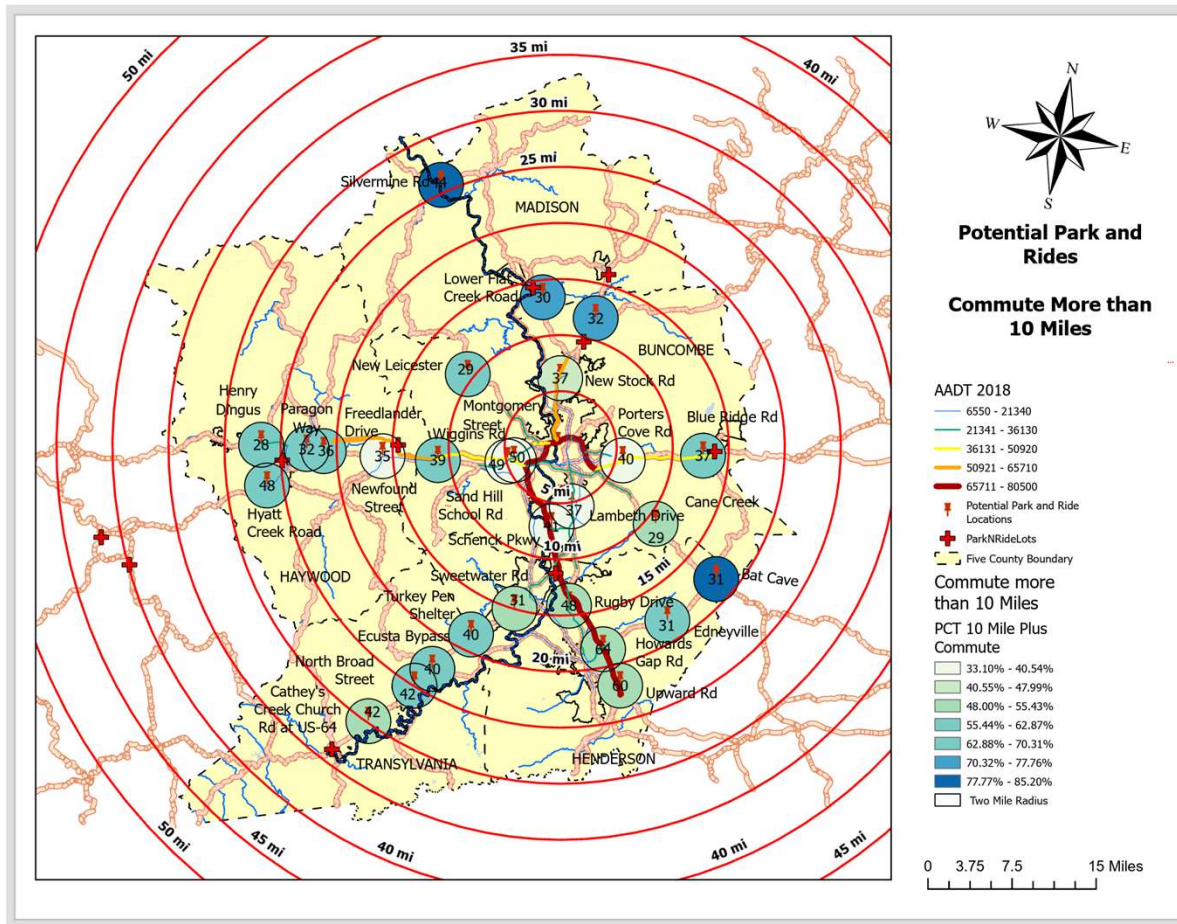
- Visual Representation Changes with Category you examine
- Worker Outflow Data

Applied the Ranking System



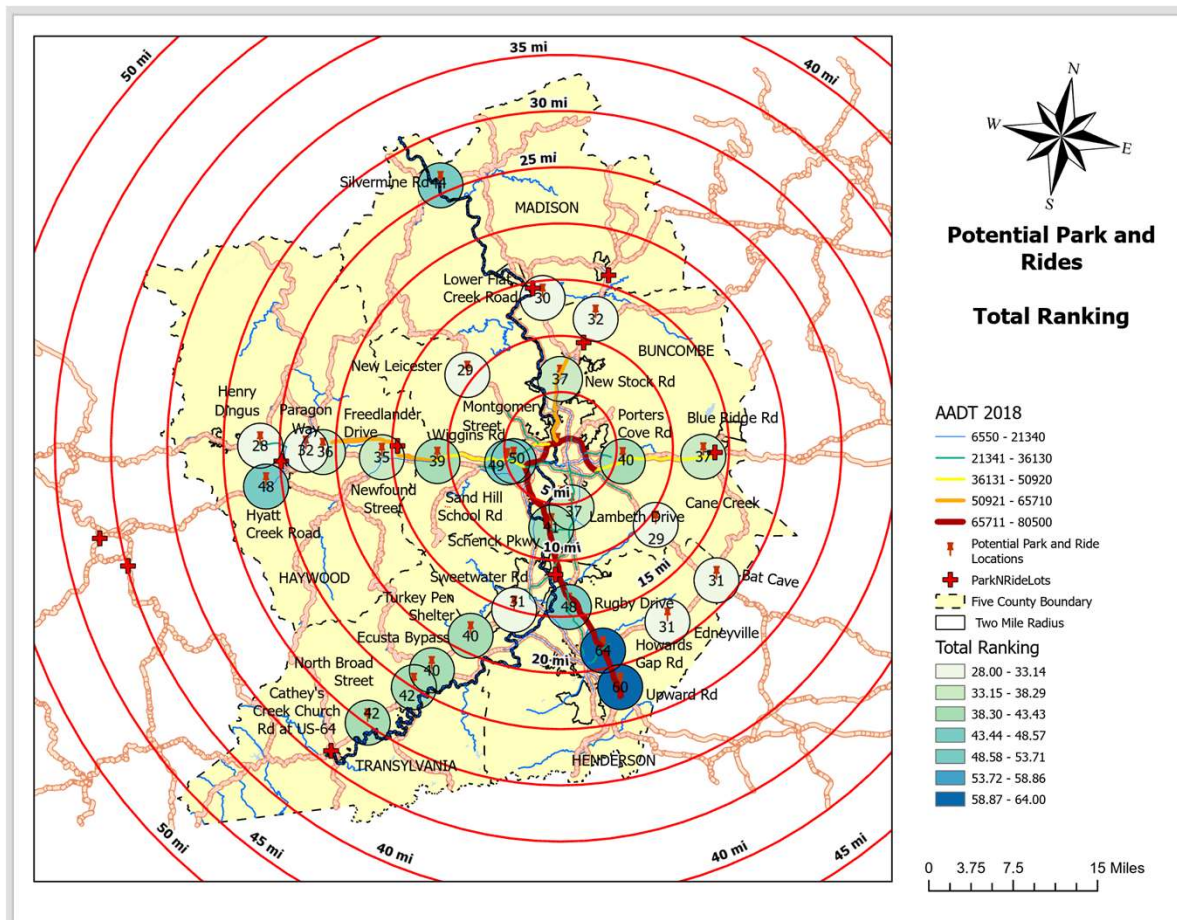
- Visual Representation Changes with Category you examine
- Zero Vehicle Households

Applied the Ranking System



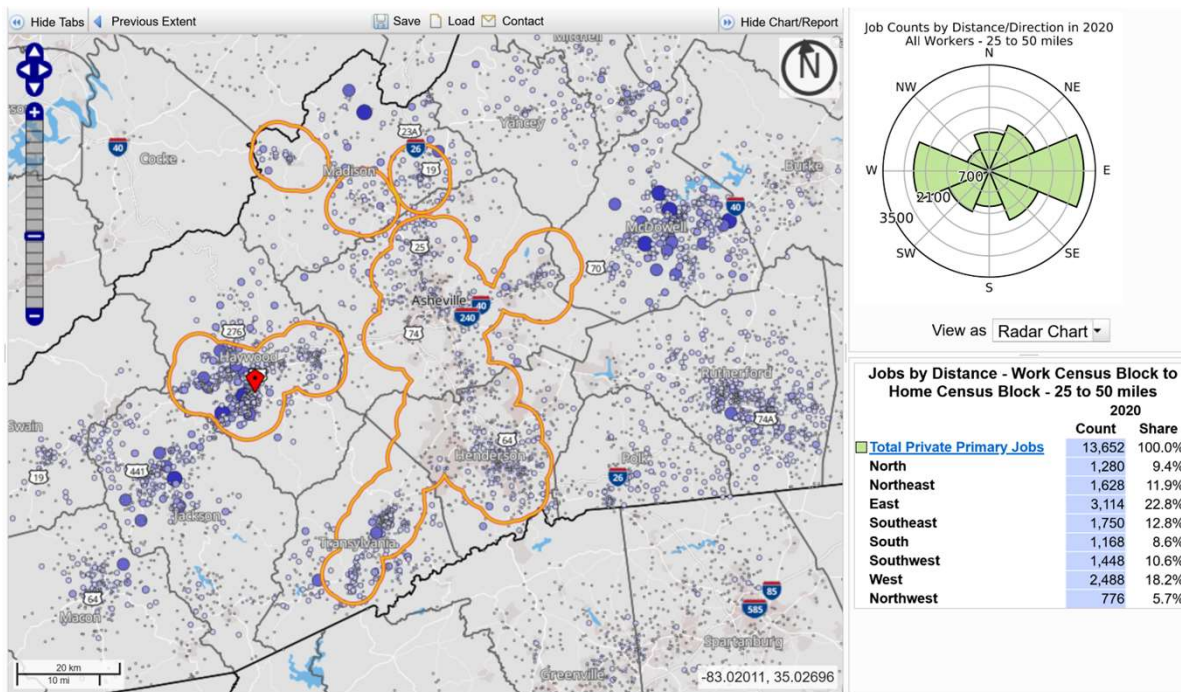
- Visual Representation Changes with Category you examine
- Commute 10 Miles or More to Work

Applied the Ranking System



- Howard's Gap (64)
 - Upward (60)
 - Montgomery/Exit 44 (50)
 - Sandhill/Exit 44 (49)
 - Rugby (48)
 - Hyatt Creek (48)
-
- Ecusta is a definite yes.
 - Lower Flat Creek is seeking funding.
 - Turkey Pen is in discussion and in Prioritization.

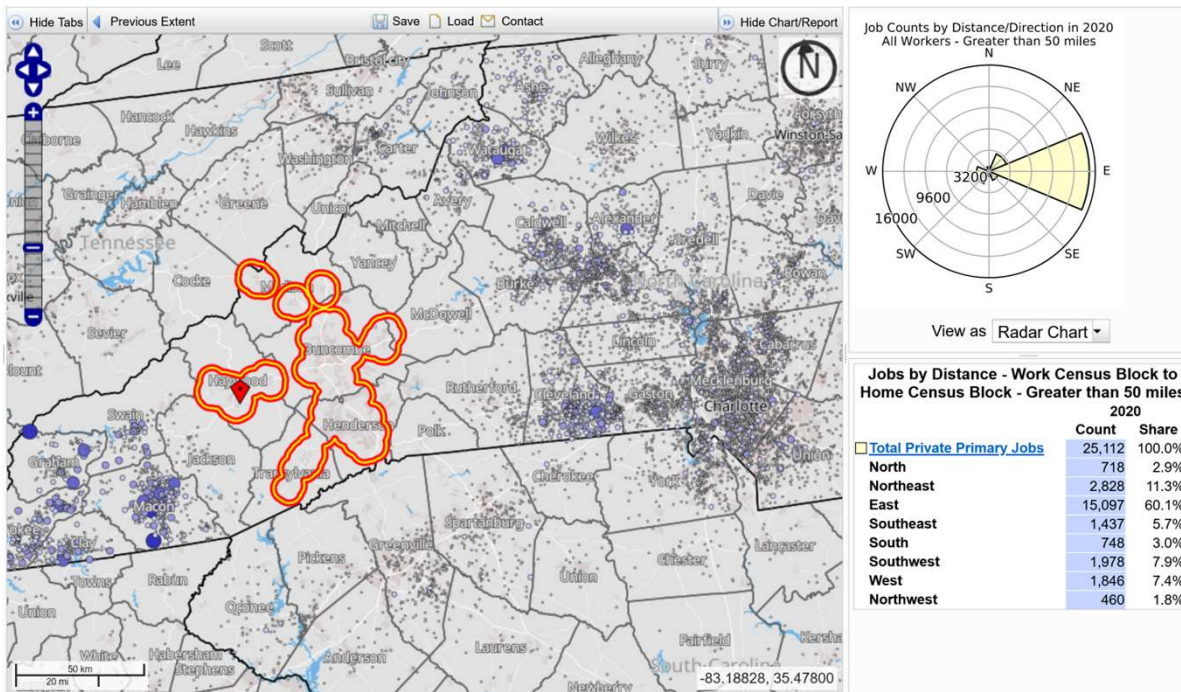
Future Potential to Work with Other Regions



Park and Ride Possibilities

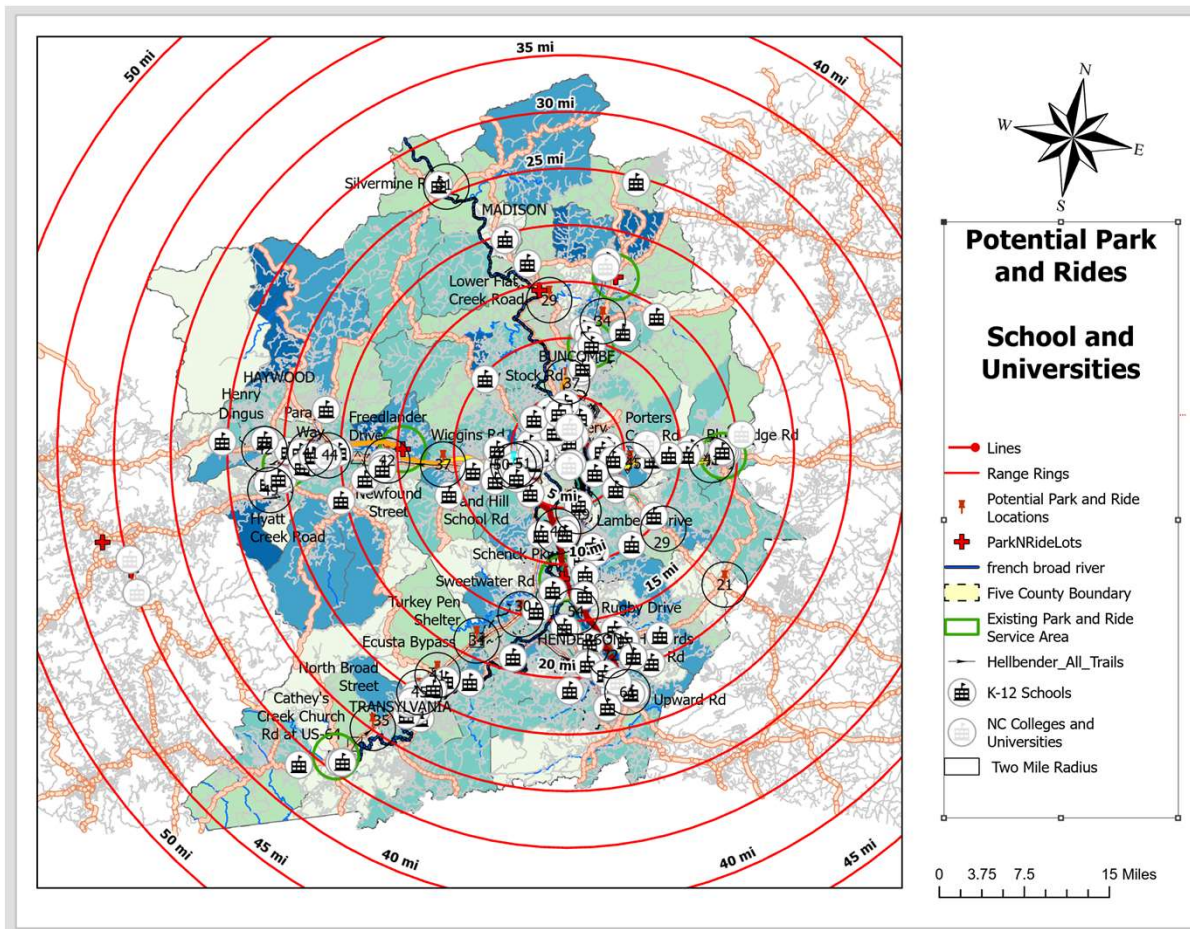
- There are 13,652 People living 25-50 Miles outside of Central Business District Working in Land Of Sky
- Jackson (Sylva, Cullowhee)
- McDowell (Marion)
- Rutherford (Rutherfordton)
- Haywood (FBRMPO)
- Also includes, Madison County and Transylvania Counties in LOS

Future Potential to Work with Other Regions

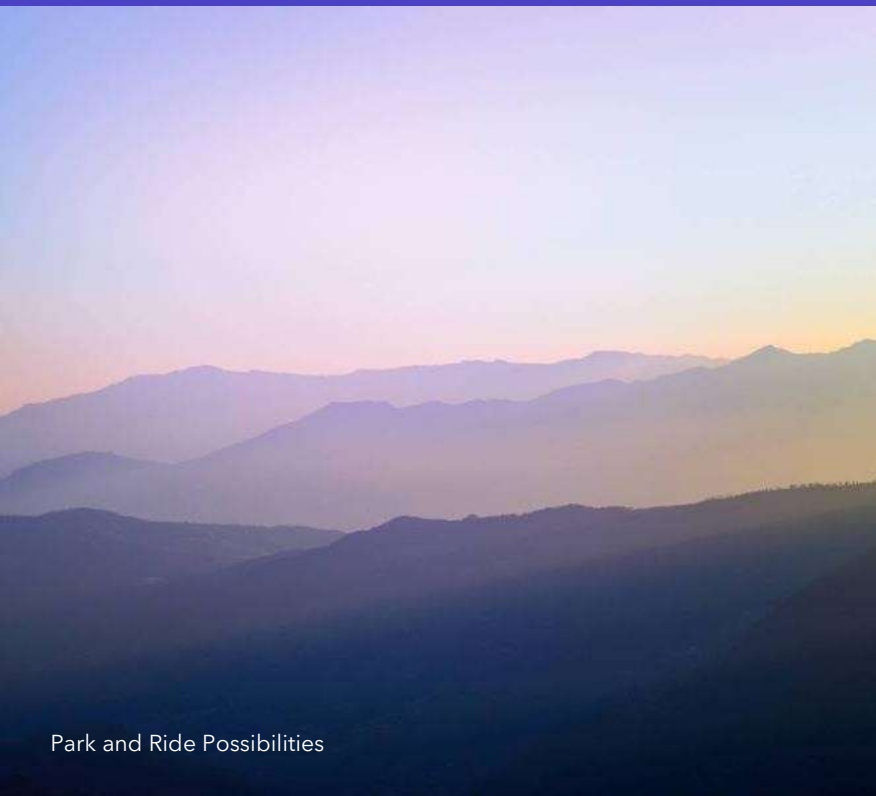


- There are 25,112 People living Fifty or More Miles outside of Land Of Sky Working in Land Of Sky
- Catawba (Hickory)
- Caldwell (Lenoir)
- Cleveland (Shelby)
- Gaston (Gastonia)
- Macon (Franklin)
- Mecklenberg (Charlotte)
- Watauga (Blowing Rock)

Future Potential to Work with Schools



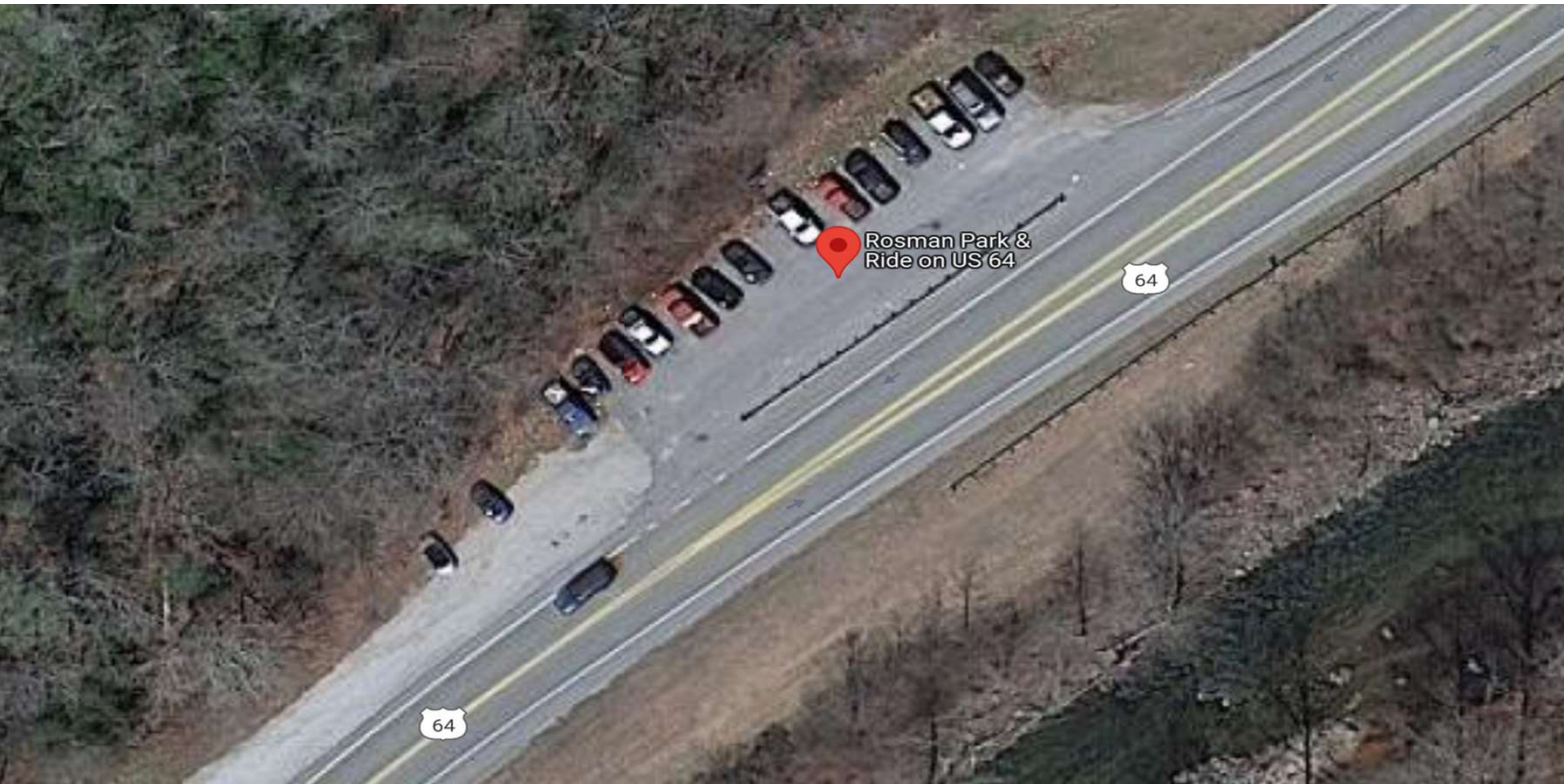
- New Safe Routes to School Position
- K-12 Schools in our Corridors
- Universities and Community Colleges
- Safe Routes to School is TDM for the pre-work residents



Park and Ride Possibilities

“By incorporating facilities into the long-range plan, they also become eligible to compete for funds with other projects at the local, state and federal (levels.)”

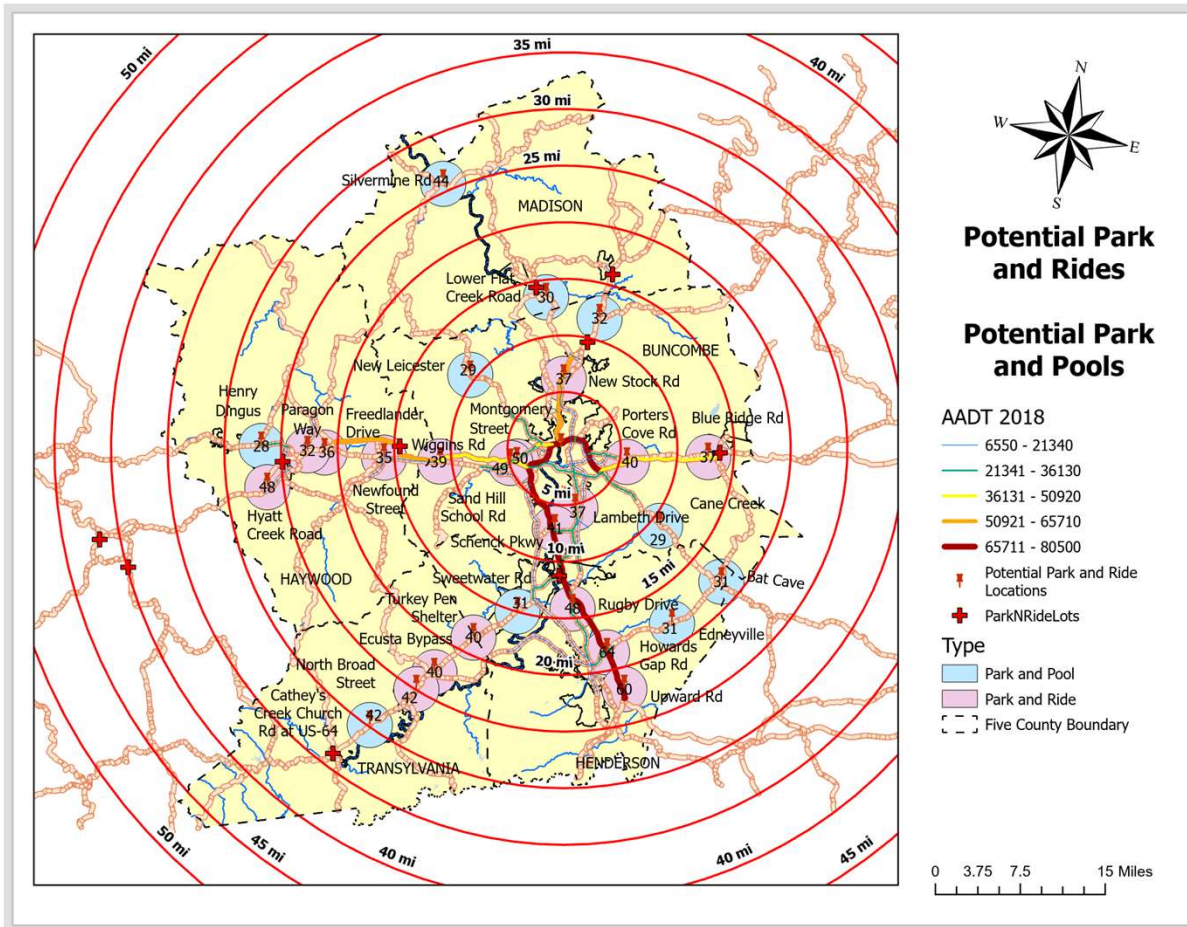
Florida Department of Transportation



Thank You

Jon Barsanti Jr
jb2@landofsky.org

Future Potential to Work with Schools



- Sixteen (18) Potential Park and Rides
- Ten (10) Potential Park and Pools