

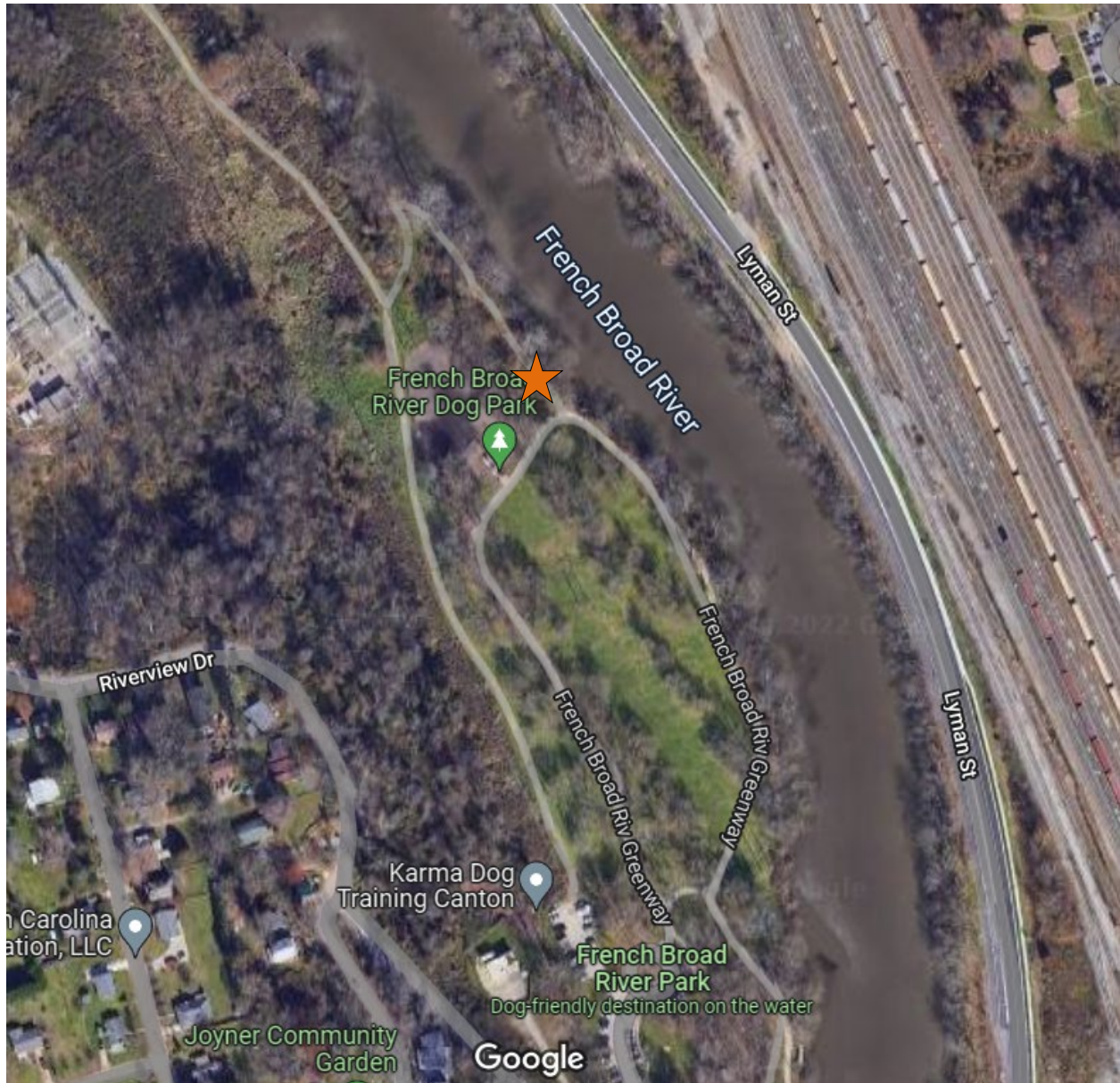
# French Broad River West Greenway Pedestrian Count

---

**Time Period:** Monday, November 14, 2022, 5:00 P.M. – Monday, November 21, 2022, 5:00 P.M.

**Location:** At the beginning of the new path, near the dog park

Note: The image below is from 2017, the current aerial from Google. This image does not reflect the recently finished paved French Broad River West portion of the greenway.



(Image: Google Maps)

## Equipment: EcoCounter Pyro Counter

The Pyro Counter is able to count bicyclists, pedestrians, skateboarders, rollerbladers, or anyone who passes within approximately 16.5 feet of the equipment. However, the device is unable to differentiate between the different users and simply counts them as general users.

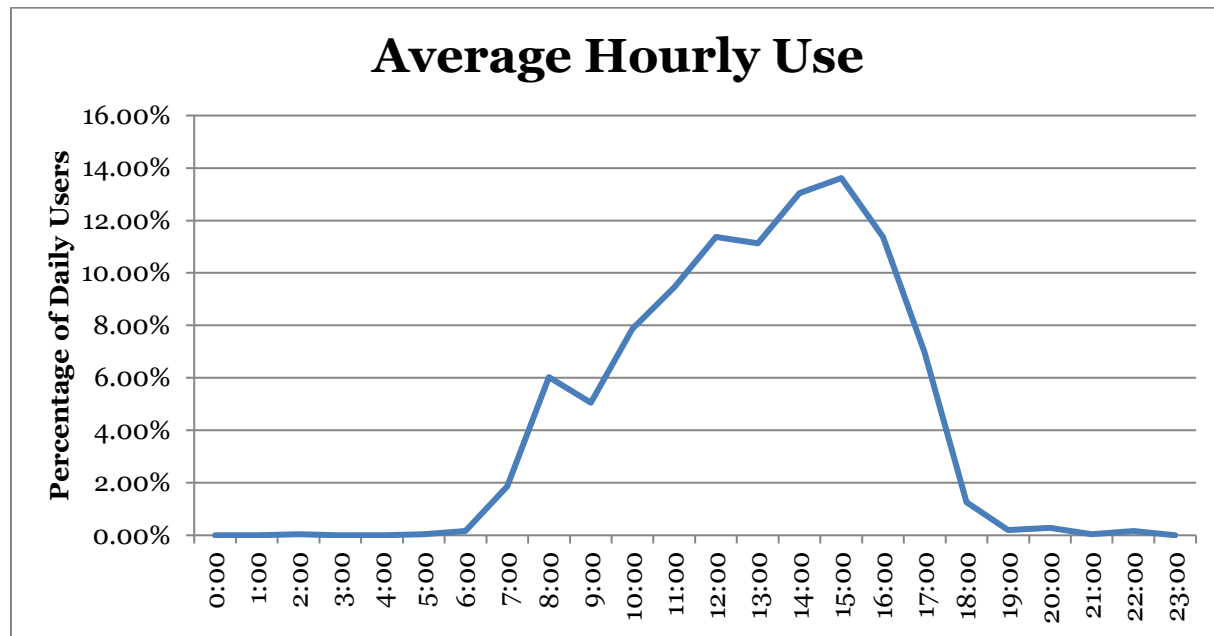
Possible sources of error include facility-users walking side-by-side or very close to each other; this is likely to include people walking or running side-by-side, children being held by a parent or walking along side of them, or dense groups of users. It is unclear how many users are likely to have been missed due to these circumstances and there has been no effort to make up for this likely discrepancy.

## Results

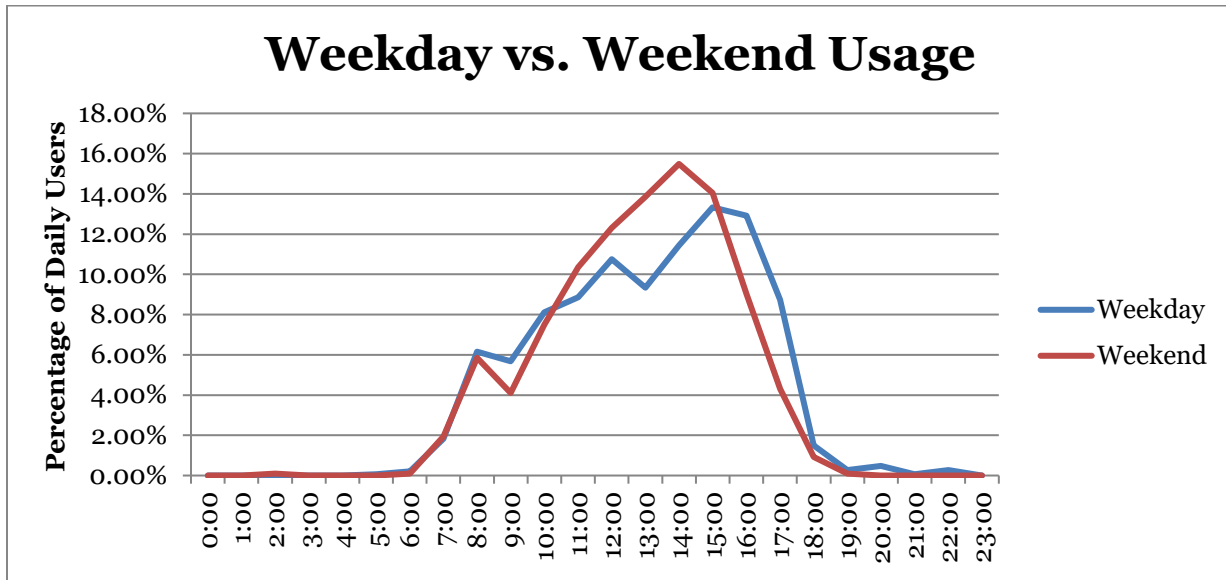
<b>Total Users</b>	<b>2453</b>
<b>Users/Hour</b>	<b>14.6</b>
<b>Peak 24-Hour Usage</b>	<b>620</b>
<b>Peak Day</b>	<b>Saturday, November 19<sup>th</sup>, 2022</b>
<b>Peak 2-Hour Period</b>	<b>180</b>
<b>Peak 2-Hour Day &amp; Time</b>	<b>Saturday, November 19<sup>th</sup>, 2:00pm - 4:00pm</b>

## Patterns of Use

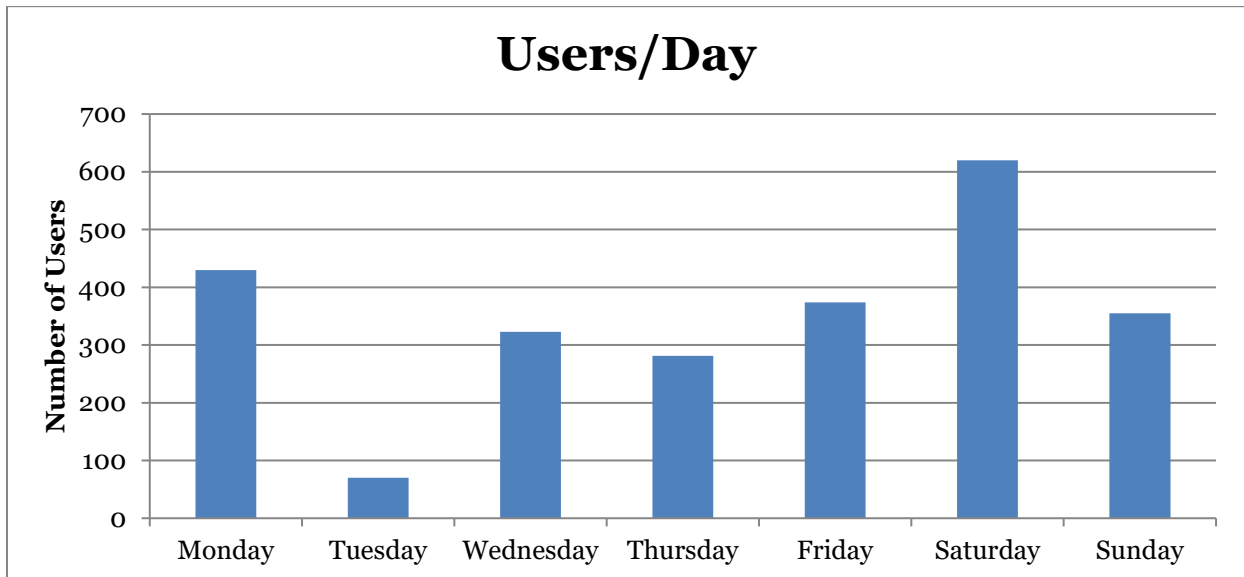
The following chart illustrates the average use of the greenway at the count location. This includes both weekday and weekend data and has greater weekday representation.



The second chart illustrates the different pattern of usage between the weekday and weekend.



The third chart shows users/day.



**Notes:**

Data from wunderground.com

Date	Minimum Temperature	Maximum Temperature	Average Temperature	Precipitation (in inches)	Max Wind Speed
<b>11/14/2022</b>	23	45	34.2	0.00	9 mph
<b>11/15/2022</b>	36	44	39.8	0.03	14 mph
<b>11/16/2022</b>	34	44	40.1	0.57	16 mph
<b>11/17/2022</b>	29	40	33.4	0.00	20 mph
<b>11/18/2022</b>	26	49	35.7	0.00	15 mph
<b>11/19/2022</b>	30	49	38.7	0.00	16 mph
<b>11/20/2022</b>	26	40	33.0	0.00	28 mph
<b>11/21/2022</b>	20	52	35.0	0.00	8 mph