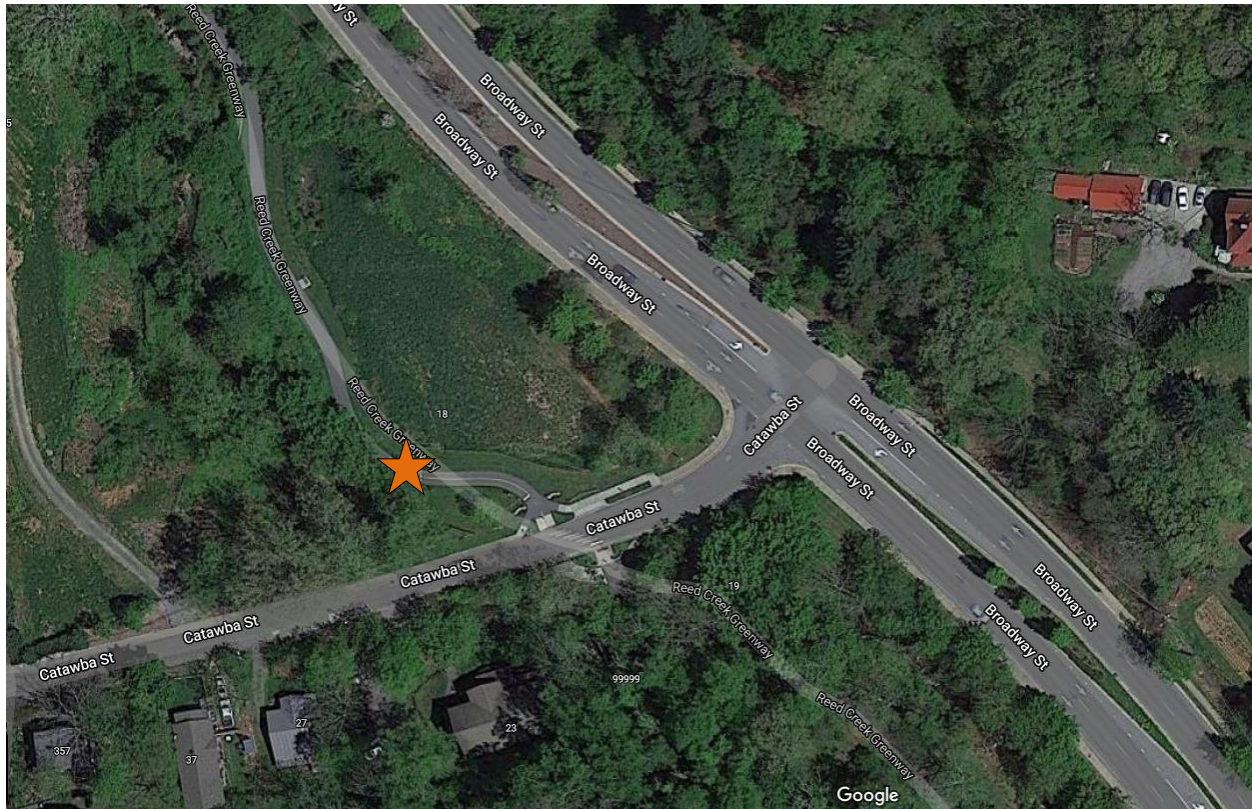


Reed Creek Greenway Pedestrian Count

Time Period: Friday, July 16, 2021, 1:00 P.M. – Friday, July 23, 2021, 1:00 P.M.

Location: Near the intersection of Catawba St. and Broadway St., on the Reed Creek Greenway.



(Image: Google Maps)

Equipment: EcoCounter Pyro Counter

The Pyro Counter is able to count bicyclists, pedestrians, skateboarders, rollerbladers, or anyone who passes within approximately 16.5 feet of the equipment. However, the device is unable to differentiate between the different users and simply counts them as general users.

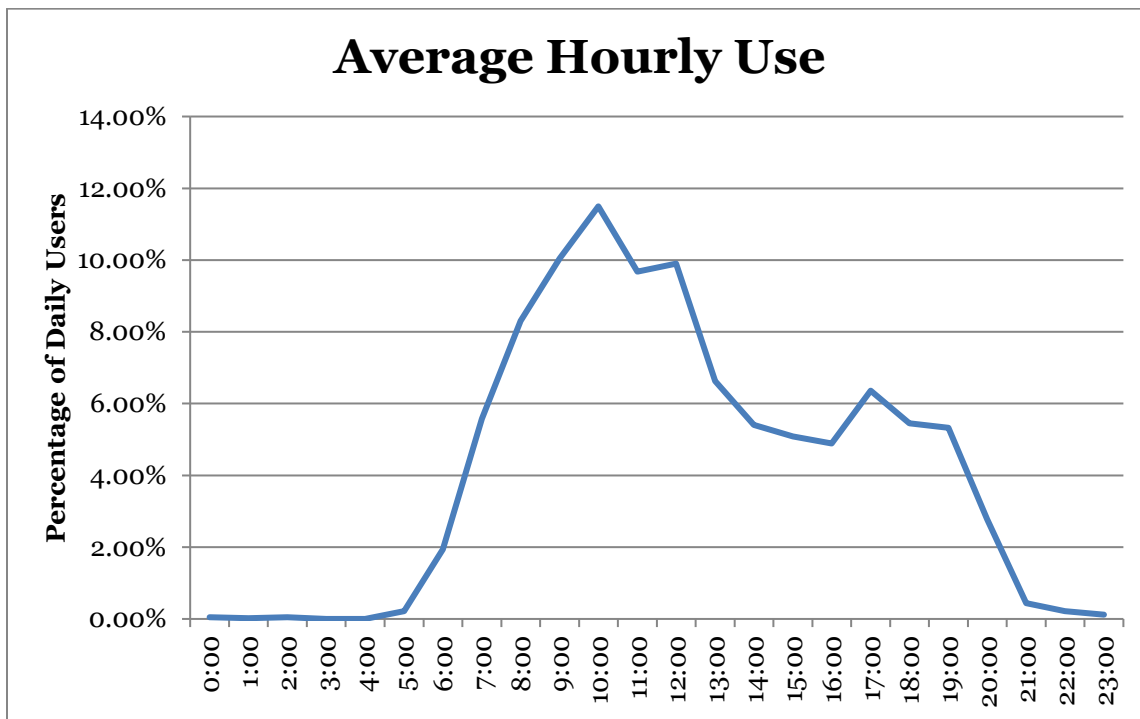
Possible sources of error include facility-users walking side-by-side or very close to each other; this is likely to include people walking or running side-by-side, children being held by a parent or walking along side of them, or dense groups of users. It is unclear how many users are likely to have been missed due to these circumstances and there has been no effort to make up for this likely discrepancy.

Results

Total Users	4071
Users/Hour	24.2
Peak 24-Hour Usage	145
Peak Day	Wednesday, July 21 st
Peak 2-Hour Period	306
Peak 2-Hour Day & Time	Saturday July 17 th , 9:00am – 10:00am

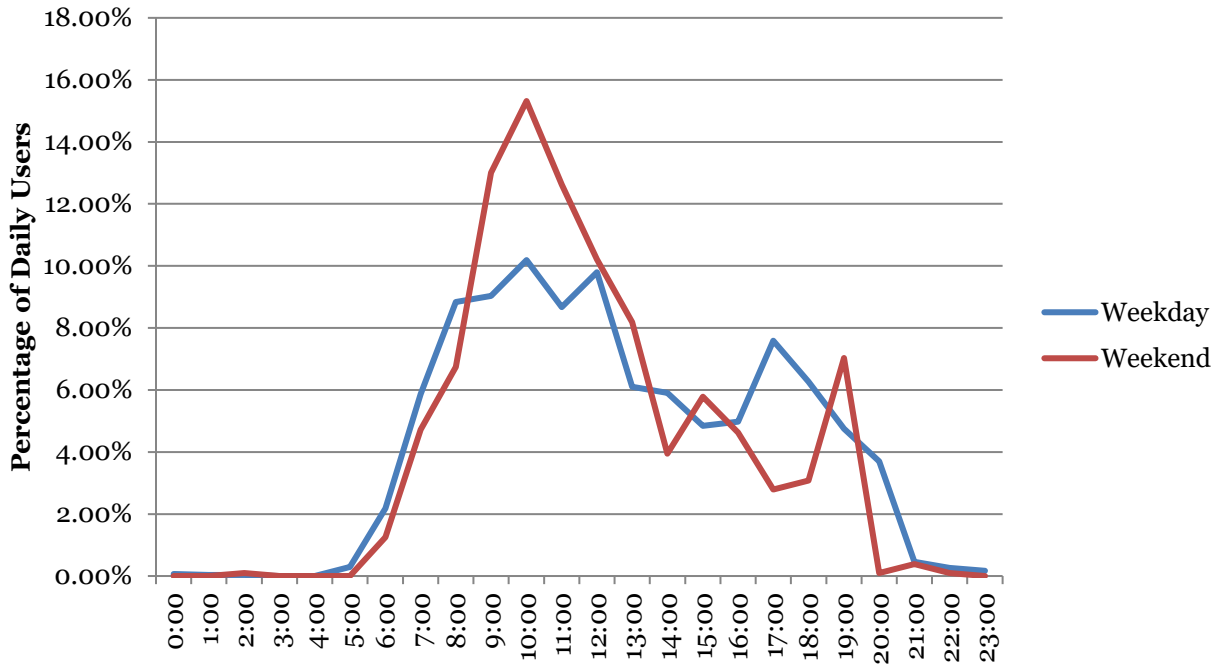
Patterns of Use

The following chart illustrates the average use of the sidewalk at the count location. This includes both weekday and weekend data and has greater weekday representation



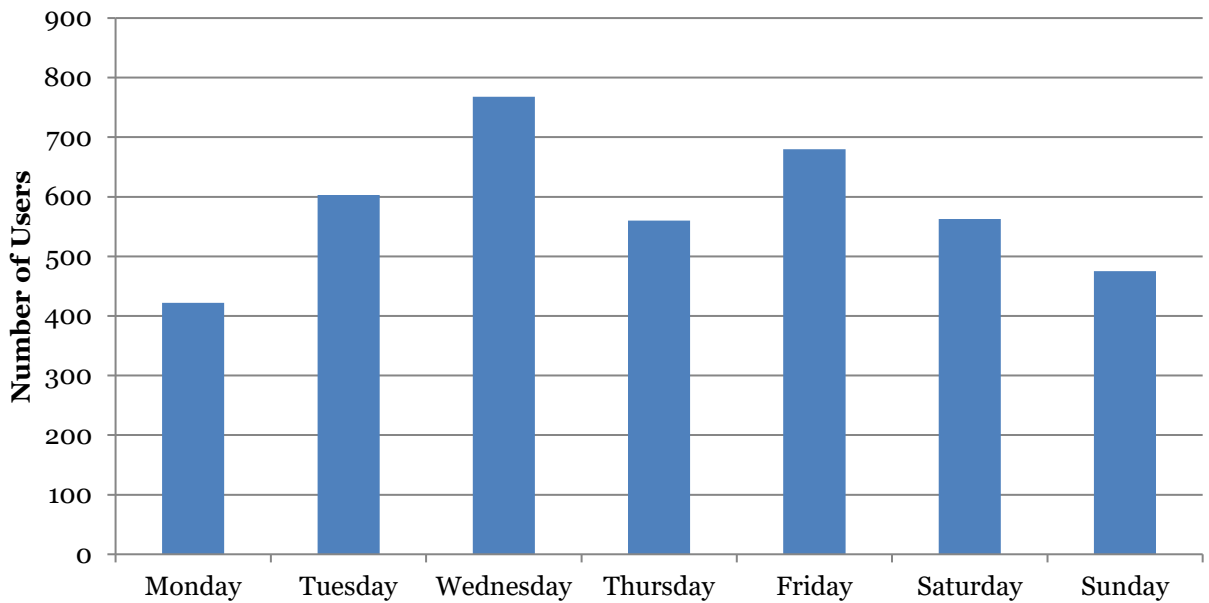
The second chart illustrates the different pattern of usage between the weekday and weekend.

Weekday vs. Weekend Usage



The third chart shows users/day.

Users/Day



Notes

Date time	Minimum Temperature	Maximum Temperature	Temperature	Precipitation	Wind Speed
07-16-2021	64.2	85.1	74.8	0	10.2
07-17-2021	67	85.9	74.2	0.31	14.6
07-18-2021	66.9	82.2	71.6	0.81	13.5
07-19-2021	66	78.2	70.4	0.12	9.1
07-20-2021	65.2	76	69.4	0.13	6.8
07-21-2021	59.2	84.1	71.6	0	14.6
07-22-2021	59.2	85	72.4	0	11
07-23-2021	62.4	85	73	0.22	10.1