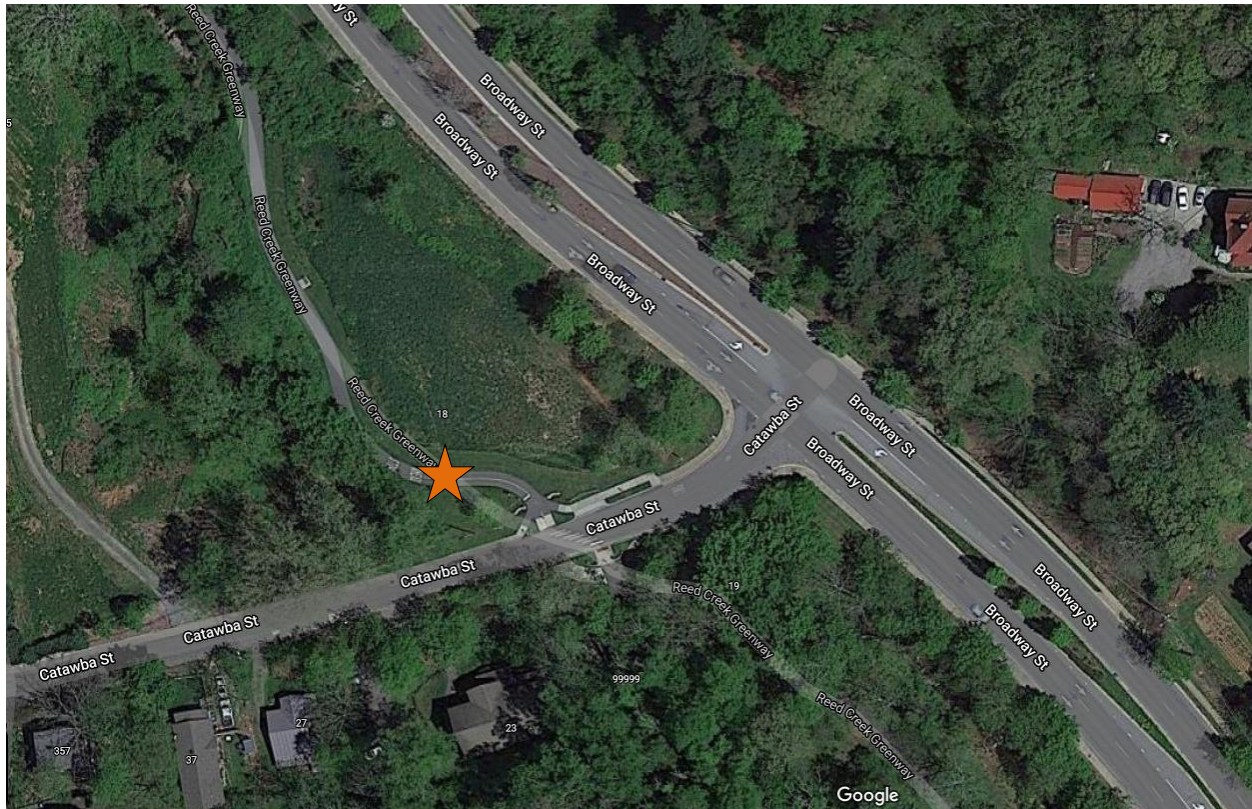


# Reed Creek Greenway Pedestrian Count

---

**Time Period:** Tuesday, July 19, 2022, 2:00 P.M. – Tuesday, July 26, 2022, 2:00 P.M.

**Location:** Near the intersection of Catawba St. and Broadway St., on the Reed Creek Greenway.



(Image: Google Maps)

**Equipment:** EcoCounter Pyro Counter

The Pyro Counter is able to count bicyclists, pedestrians, skateboarders, rollerbladers, or anyone who passes within approximately 16.5 feet of the equipment. However, the device is unable to differentiate between the different users and simply counts them as general users.

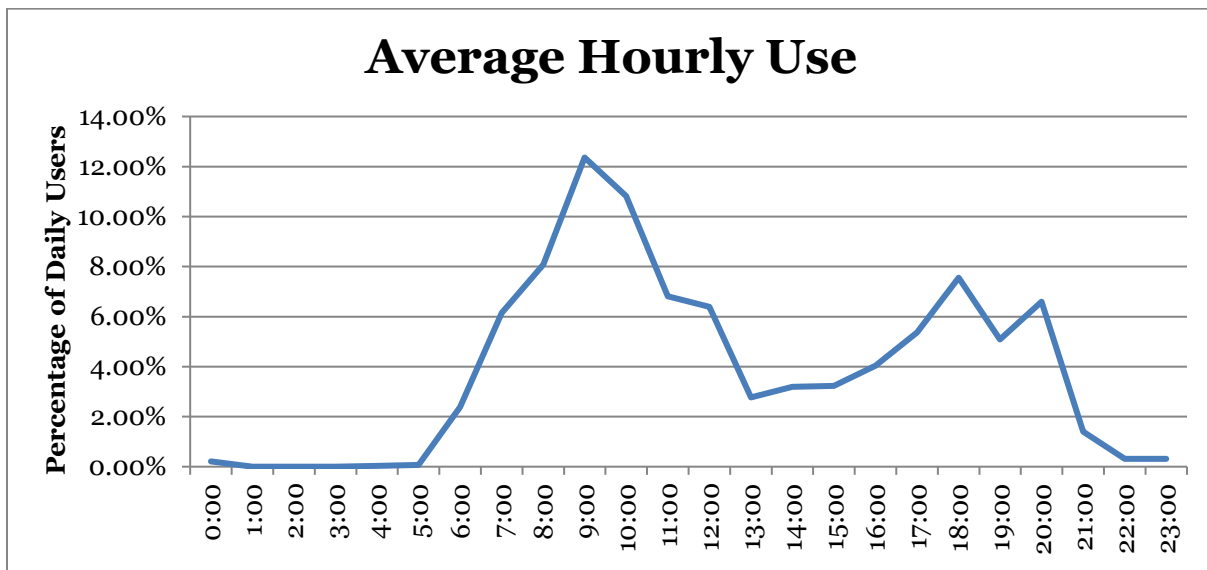
Possible sources of error include facility-users walking side-by-side or very close to each other; this is likely to include people walking or running side-by-side, children being held by a parent or walking along side of them, or dense groups of users. It is unclear how many users are likely to have been missed due to these circumstances and there has been no effort to make up for this likely discrepancy.

## Results

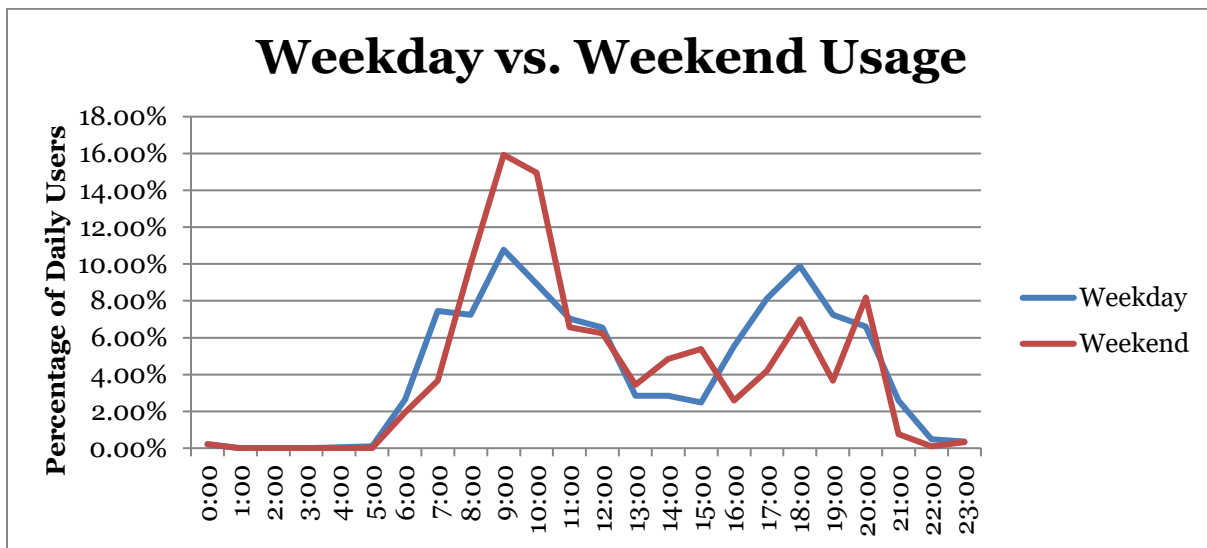
Total Users	2654
Users/Hour	16.9
Peak 24-Hour Usage	499
Peak Day	Saturday, July 23 <sup>rd</sup>
Peak 2-Hour Period	159
Peak 2-Hour Day & Time	Saturday July 23 <sup>rd</sup> , 9:00am - 11:00am

## Patterns of Use

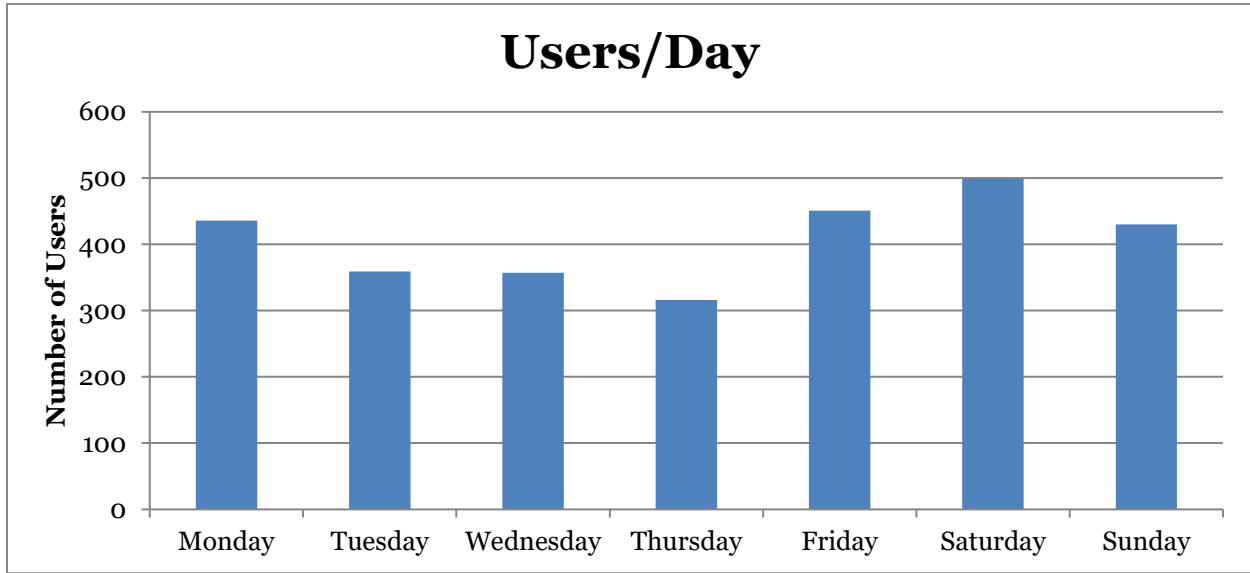
The following chart illustrates the average use of the greenway at the count location. This includes both weekday and weekend data and has greater weekday representation.



The second chart illustrates the different pattern of usage between the weekday and weekend.



The third chart shows users/day.



**Notes:**

Date	Minimum Temperature	Maximum Temperature	Average Temperature	Precipitation (in inches)	Max Wind Speed
7/19/2022	65	83	72.7	0.40	14 mph
7/20/2022	65	85	72.1	0.01	10 mph
7/21/2022	70	88	76.2	0.01	15 mph
7/22/2022	66	90	73.7	0.02	8 mph
7/23/2022	64	91	78.2	0.00	12 mph
7/24/2022	67	90	79.2	0.00	12 mph
7/25/2022	69	84	74.7	0.00	13 mph
7/26/2022	69	83	73.3	0.17	17 mph