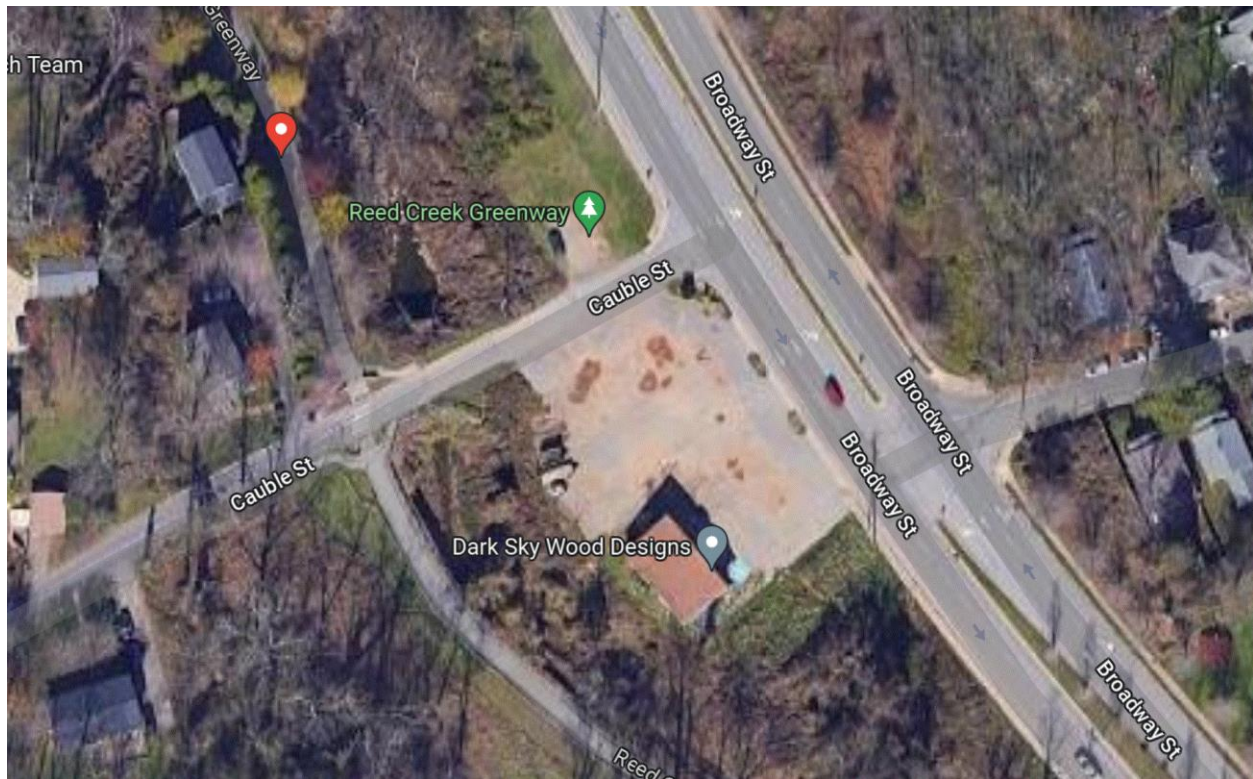


Reed Creek Greenway Pedestrian Count

Time Period: Wednesday October 5, 2023 – Tuesday October 11, 2023 (Part 2)

Location: Near the intersection of Cauble St. and Broadway St., on the Reed Creek Greenway.



(Image: Google Maps)

Equipment: EcoCounter Pyro Counter, Set out on October 5, and retrieved October 12, 2023

The Pyro Counter is able to count bicyclists, pedestrians, skateboarders, rollerbladers, or anyone who passes within approximately 16.5 feet of the equipment. However, the device is unable to differentiate between the different users and simply counts them as general users.

Possible sources of error include facility-users walking side-by-side or very close to each other; this is likely to include people walking or running side-by-side, children being held by a parent or walking along side of them, or dense groups of users. It is unclear how many users are likely to have been missed due to these circumstances and there has been no effort to make up for this likely discrepancy.

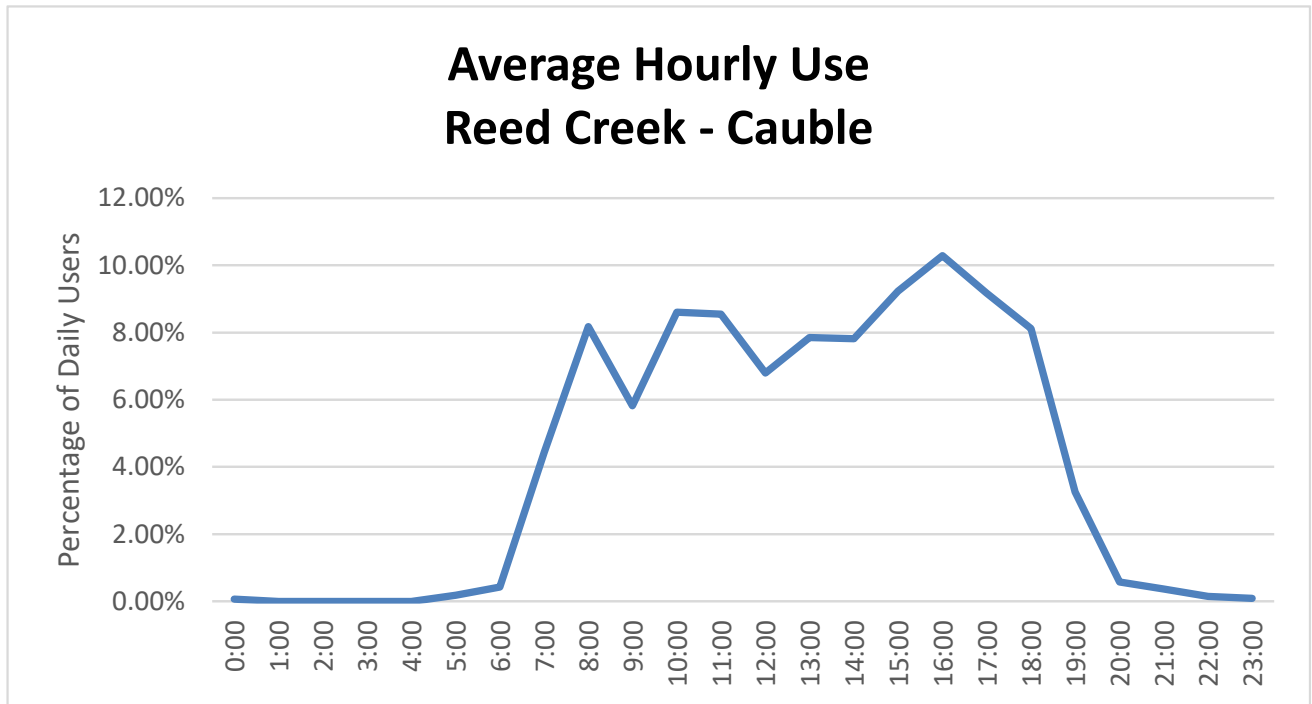
Results

Reed Creek - Cauble

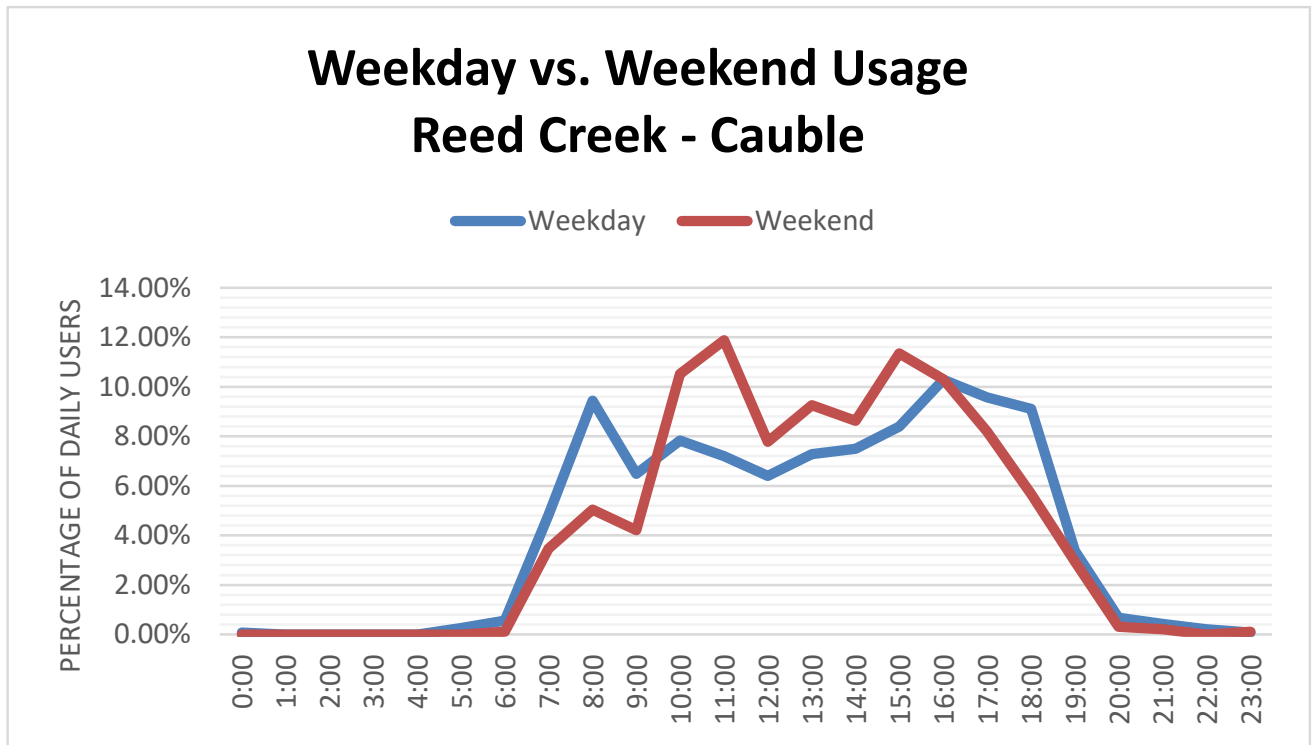
Total Users	3312
Users/Hour	19.7
Peak 24-Hour Usage	546
Peak Day	Tuesday October 10, 2023
Peak 2-Hour Usage Period	134
Peak 2-Hour Date and Time	Sunday October 8, 2023 - 3 PM - 5 PM

Patterns of Use

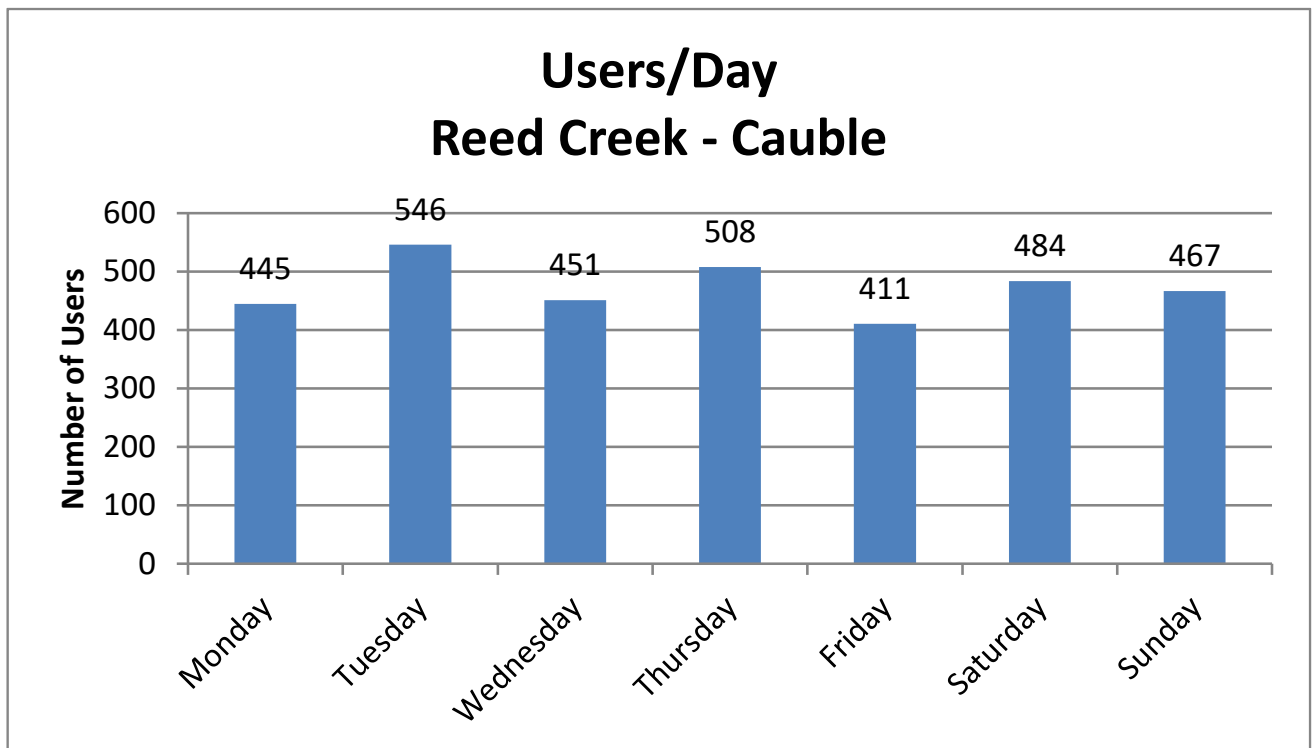
The following chart illustrates the average use of the sidewalk at the count location. This includes both weekday and weekend data and has greater weekday representation.



The second chart illustrates the different pattern of usage between the weekday and weekend.



The third chart shows users/day.



Notes

There have been two sites along Reed Creek that have previously been surveyed: Reed Creek at Catawba and Reed Creek at Cauble. This location at Catawba has been surveyed the week of July 16th of 2021 and July 19th of 2022. The Cauble location was last surveyed on September 22, 2014.

The peak day for usage at the Cauble location was Sunday October 8 with 134 users. There was a second period of time between 5 PM and 7 PM on Tuesday October 10, where there were 132 users. During 2014 the peak day was Monday September 12. Overall, the usage this time is consistent during daylight hours, as we approach the “Fall Back” to East Coast Standard Time. Usage is up from 2014, almost across the board. The main difference is in the peak two-hour usage.

The corner where there was a business (SW Corner of Broadway and Cauble) is being redeveloped into a 29-Unit Complex. The NW corner is currently being used for staging, and according to the developer will be available for trail parking.

Date Time	Minimum Temperature	Maximum Temperature	Average Temperature	Precipitation	Wind
Thursday, October 5, 2023	55	73	67.6	0	1.8
Friday, October 6, 2023	58	78	60.3	0	6.5
Saturday, October 7, 2023	47	62	64.7	0.21	12.1
Sunday, October 8, 2023	40	60	66.3	0	6.5
Monday, October 9, 2023	35	63	60.2	0	4.8
Tuesday, October 10, 2023	45	74	65.2	0	3.5
Wednesday, October 11, 2023	46	65	56	0	1.6

<https://www.wunderground.com/history/monthly/us/nc/fletcher/KAVL>