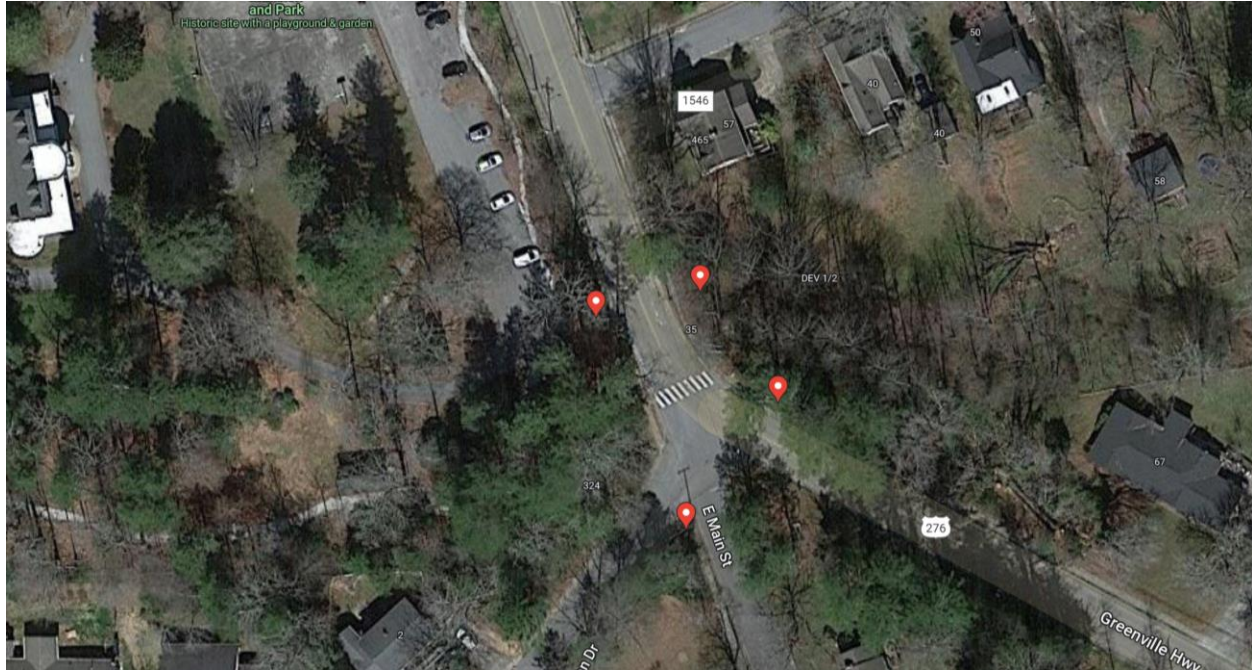


Main Street and Greenville Pedestrian Count

Time Period: Monday September 25, 2023 Noon to Monday October 2, 2023 Noon

Location: Main Street at Greenville Highway – Southeast Corner (Report 4 of 4)



(Image: Google Maps)

Equipment: EcoCounter Pyro Counter

The Pyro Counter is able to count bicyclists, pedestrians, skateboarders, rollerbladers, or anyone who passes within approximately 16.5 feet of the equipment. However, the device is unable to differentiate between the different users and simply counts them as general users.

Possible sources of error include facility-users walking side-by-side or very close to each other; this is likely to include people walking or running side-by-side, children being held by a parent or walking along side of them, or dense groups of users. It is unclear how many users are likely to have been missed due to these circumstances and there has been no effort to make up for this likely discrepancy.

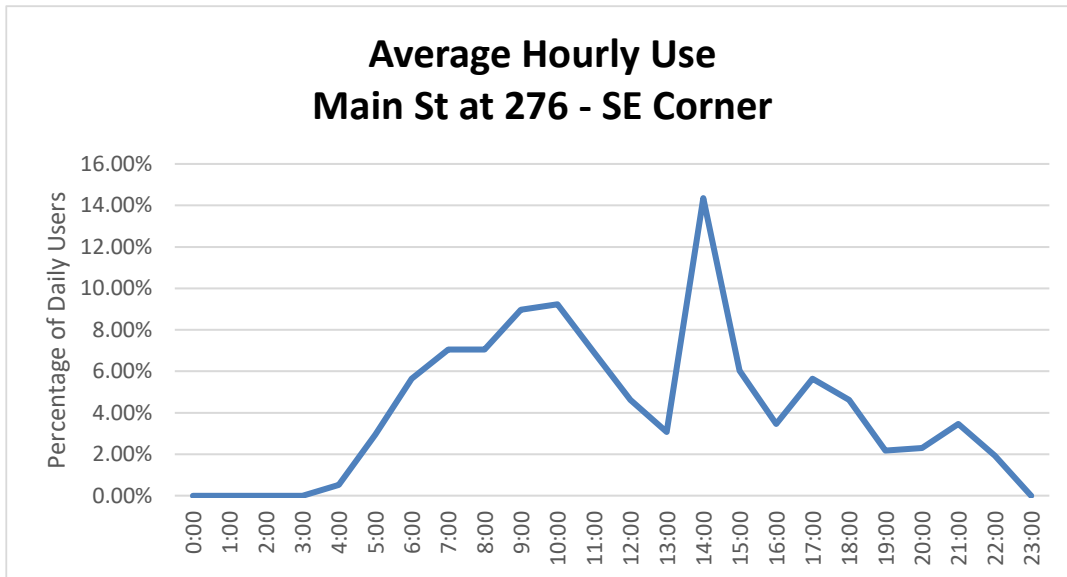
Results

Main St at 276 - SE Corner

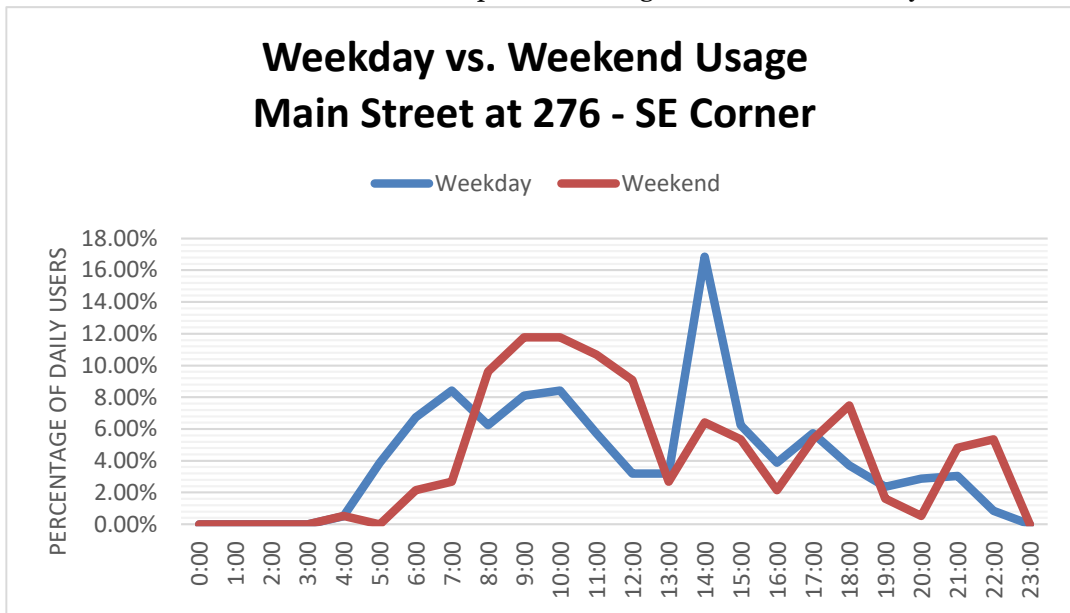
Total Users	780
Users/Hour	4.6
Peak 24-Hour Usage	139
Peak Day	Tuesday Oct. 3, 2023
Peak 2-Hour UsagePeriod	40
Peak 2-Hour Date and Time	Tuesday Oct. 3, 2023 - 9AM - 11 AM

Patterns of Use

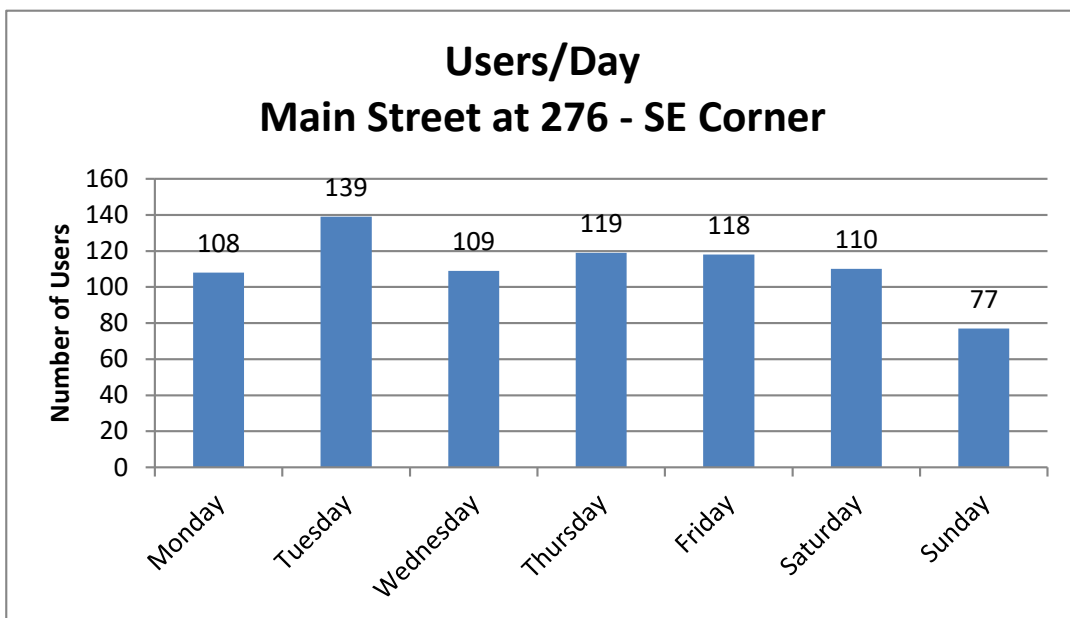
The following chart illustrates the average use of the sidewalk at the count location. This includes both weekday and weekend data and has greater weekday representation.



The second chart illustrates the different pattern of usage between the weekday and weekend.



The third chart shows users/day.



Notes

Daily Observations - Fletcher, NC																
Time	Temperature (°F)			Dew Point (°F)			Humidity (%)			Wind Speed (mph)			Pressure (in)			Precipitation (in)
	Max	Avg	Min	Max	Avg	Min	Max	Avg	Min	Max	Avg	Min	Max	Avg	Min	Total
Sep 25	78	67.5	59	60	58.6	57	93	74.9	54	9	3.5	0	27.9	27.8	27.8	0
26	76	67.4	61	62	60.6	59	93	79.6	57	10	3.8	0	27.9	27.9	27.9	0
27	66	63.1	60	61	57.6	55	93	82.5	73	8	3.7	0	28	27.9	27.9	0
28	79	63.6	57	62	56.7	52	97	79.9	44	14	4.6	0	27.9	27.9	27.8	0
29	80	64.9	59	62	58.8	53	100	83.3	40	14	3.5	0	27.9	27.9	27.8	0.03
30	81	65.4	53	60	55.6	51	93	73.8	39	8	2.5	0	28	27.9	27.9	0
1-Oct	79	67.6	62	61	59.8	56	94	77.7	46	7	1.9	0	28	28	27.9	0
2	80	60.3	53	59	54.8	52	100	85.5	38	6	0.7	0	28	28	27.9	0
https://www.wunderground.com/history/monthly/us/nc/fletcher/KAVL/date/2023-9 https://www.wunderground.com/history/monthly/us/nc/fletcher/KAVL/date/2023-10																