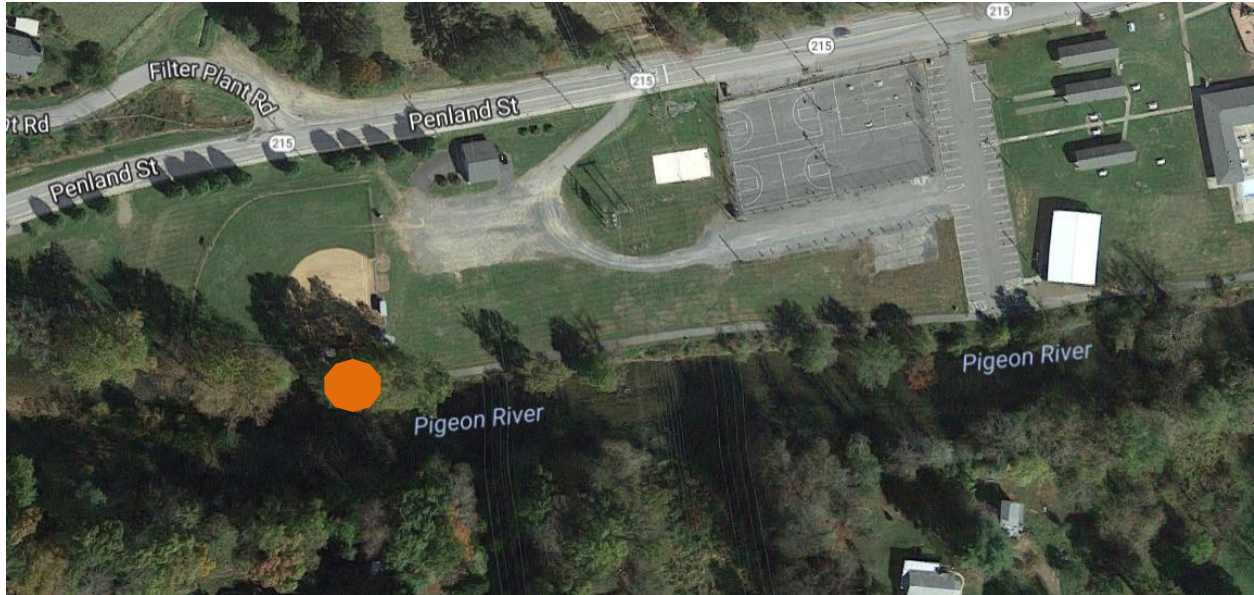


# Canton Pedestrian Count

**Time Period:** Friday, June 23, 2017 12:00 A.M. – Thursday, June 29, 2017 12:00 A.M.

**Location:** On the Pigeon River Greenway, behind the baseball field.



(Image: Google Maps)

**Equipment:** EcoCounter Pyro Counter

The Pyro Counter is able to count bicyclists, pedestrians, skateboarders, rollerbladers, or anyone who passes within approximately 16.5 feet of the equipment. However, the device is unable to differentiate between the different users and simply counts them as general users.

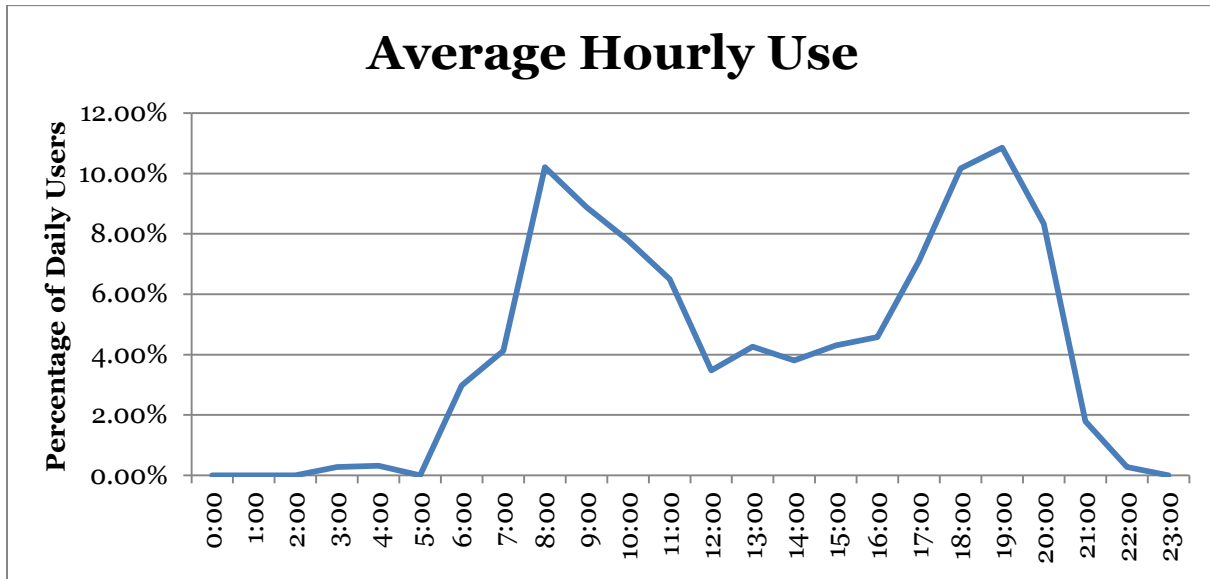
Possible sources of error include facility-users walking side-by-side or very close to each other; this is likely to include people walking or running side-by-side, children being held by a parent or walking along side of them, or dense groups of users. It is unclear how many users are likely to have been missed due to these circumstances and there has been no effort to make up for this likely discrepancy.

## Results

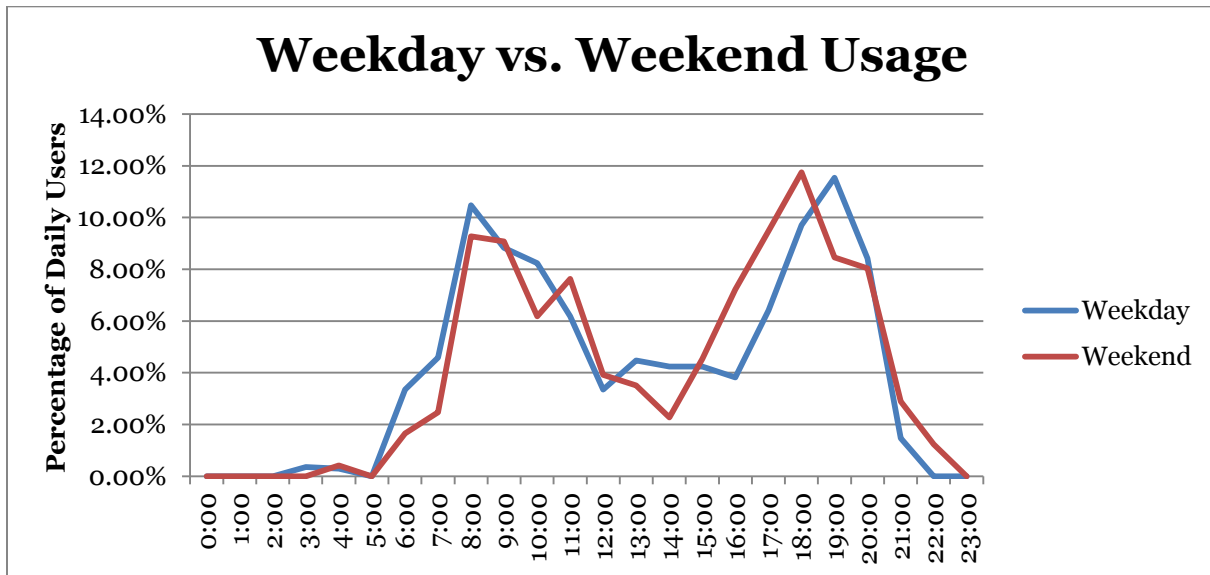
<b>Total Users</b>	<b>2,184</b>
<b>Users/Hour</b>	<b>13.0</b>
<b>Peak 24-Hour Usage</b>	<b>453</b>
<b>Peak Day</b>	<b>Monday, June 26<sup>th</sup></b>
<b>Peak 2-Hour Period</b>	<b>111</b>
<b>Peak 2-Hour Day &amp; Time</b>	<b>6:00 – 8:00 P.M. Monday, June 26<sup>th</sup></b>

## Patterns of Use

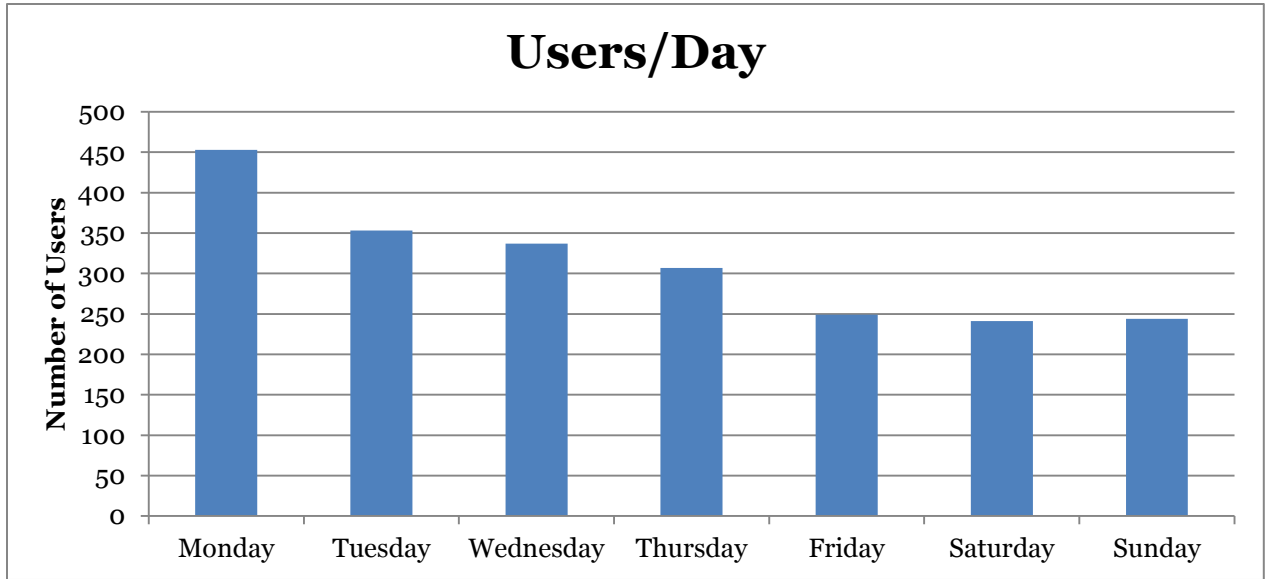
The following chart illustrates the average use of the sidewalk at the count location. This includes both weekday and weekend data and has greater weekday representation.



The second chart illustrates the different pattern of usage between the weekday and weekend.



The third chart shows users/day.



## Notes

<b>18</b> Tstorm Actual: 88°   62° 0.01 in Average: 84°   64° 0.14 in	<b>19</b> Fog Actual: 89°   61° 0.00 in Average: 84°   64° 0.13 in	<b>20</b> Clear Actual: 89°   63° 0.00 in Average: 84°   64° 0.14 in	<b>21</b> Clear Actual: 91°   66° 0.00 in Average: 84°   64° 0.14 in	<b>22</b> Tstorm Actual: 91°   68° 0.00 in Average: 84°   64° 0.14 in	<b>23</b> Tstorm Actual: 88°   69° 0.16 in Average: 84°   64° 0.14 in	<b>24</b> Tstorm Actual: 87°   68° T in Average: 84°   64° 0.14 in
<b>25</b> Tstorm Actual: 90°   67° 0.64 in Average: 84°   64° 0.14 in	<b>26</b> Fog Actual: 82°   67° 0.00 in Average: 84°   64° 0.14 in	<b>27</b> Tstorm Actual: 83°   69° 0.44 in Average: 84°   64° 0.13 in	<b>28</b> Rain Actual: 79°   69° 0.03 in Average: 84°   64° 0.14 in	<b>29</b> Rain Actual: 81°   66° 0.06 in Average: 84°   64° 0.13 in	<b>30</b> Partly Cloudy Actual: 82°   61° 0.00 in Average: 84°   64° 0.14 in	<b>31</b> Fog Actual: 82°   55° 0.00 in Average: 84°   64° 0.14 in

(Via Weather Underground)