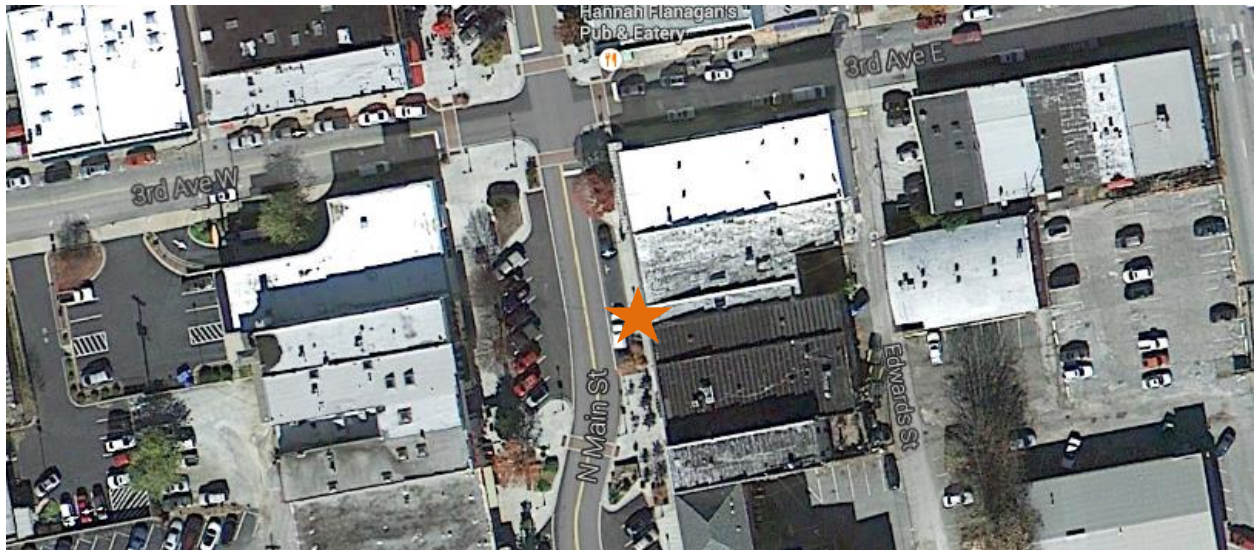


# Downtown Hendersonville Pedestrian Count

**Time Period:** Monday, December 22, 2014 12:00 A.M. – Monday, December 29, 2014 12:00 A.M.

**Location:** Downtown Hendersonville, approximately 100 feet southeast of the intersection of N Main Street and 3<sup>rd</sup> Avenue.



(Image: Google Maps)

**Equipment:** EcoCounter Pyro Counter

The Pyro Counter is able to count bicyclists, pedestrians, skateboarders, rollerbladers, or anyone who passes within approximately 16.5 feet of the equipment. However, the device is unable to differentiate between the different users and simply counts them as general users.

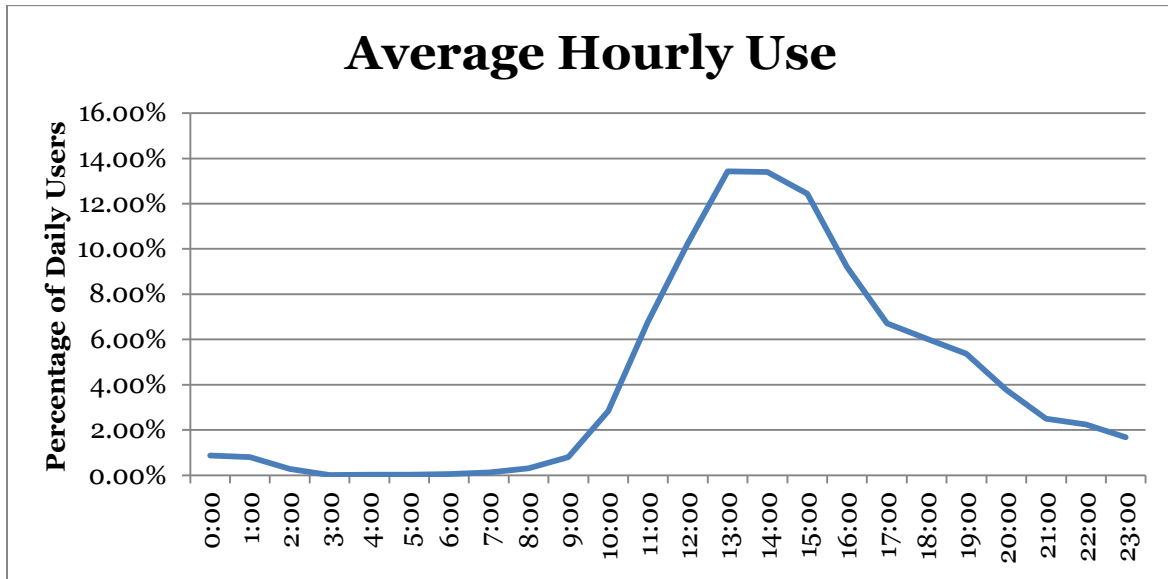
Possible sources of error include facility-users walking side-by-side or very close to each other; this is likely to include people walking or running side-by-side, children being held by a parent or walking along side of them, or dense groups of users. It is unclear how many users are likely to have been missed due to these circumstances and there has been no effort to make up for this likely discrepancy.

## Results

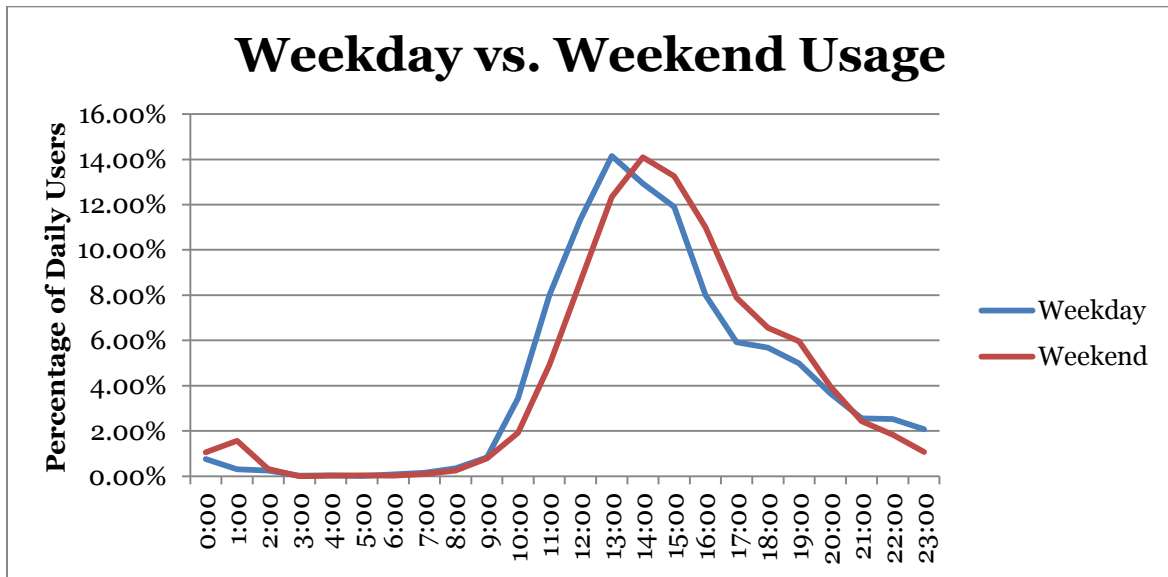
<b>Total Users</b>	<b>13,103</b>
<b>Users/Hour</b>	<b>77.99</b>
<b>Peak 24-Hour Usage</b>	<b>3,450</b>
<b>Peak Day</b>	<b>Saturday, December 27th</b>
<b>Peak 2-Hour Period</b>	<b>925</b>
<b>Peak 2-Hour Day &amp; Time</b>	<b>2:00 – 4:00 P.M. Saturday, December 27th</b>

## Patterns of Use

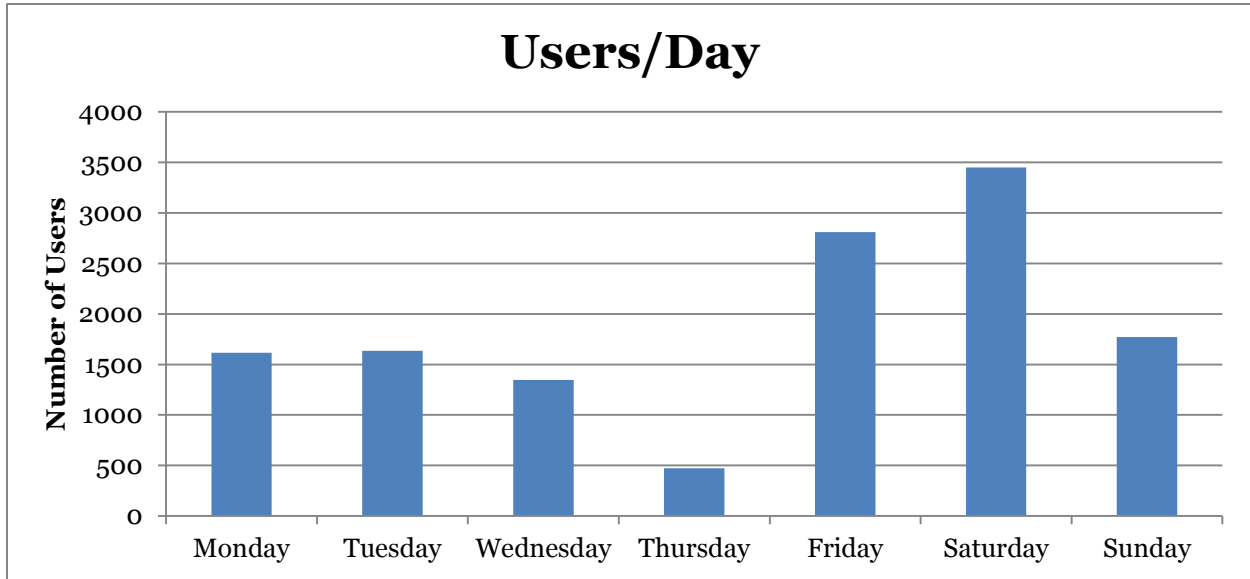
The following chart illustrates the average use of the sidewalk on N Main Street. This includes both weekday and weekend data and has greater weekday representation.



The second chart illustrates the different pattern of usage between the weekday and weekend.



The third chart shows users/day.



### Notes

The weather was slightly warmer than average for this time of year. Highs reached into the sixties on Friday, December 26<sup>th</sup> – Sunday, December 28<sup>th</sup>. Major precipitation occurred on Thursday, December 25<sup>th</sup> (1.23 in.) and Wednesday, December 24<sup>th</sup> (0.63 in.) Several other days during the count had very minor precipitation (0.1 in. or less.)

This count was conducted during the Christmas Holiday Week, which likely does not represent “average” pedestrian volumes during the week.