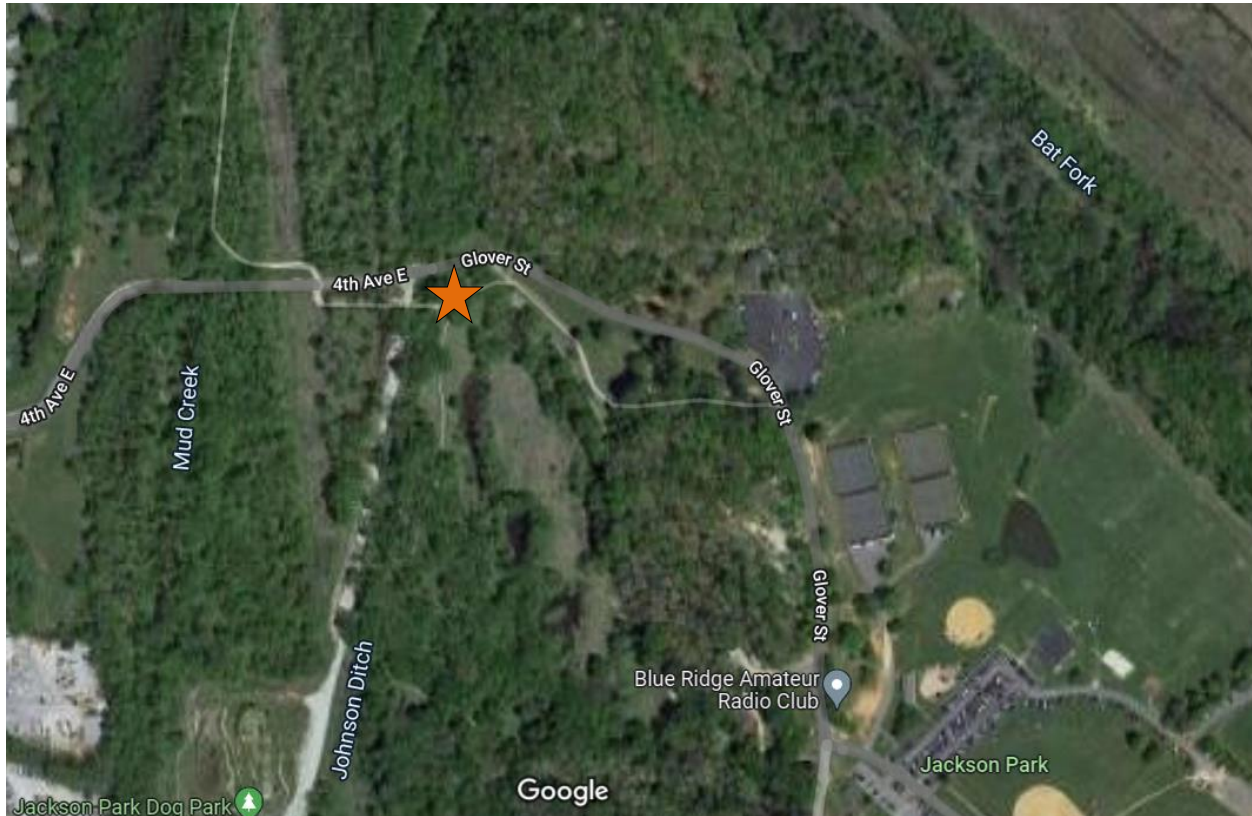


Oklawaha Greenway at Jackson Park Pedestrian Count

Time Period: Monday, February 28, 2022, 4:00 P.M. – Monday, March 7, 2022, 4:00 P.M.

Location: Oklawaha Greenway in Jackson Park



(Image: Google Maps)

Equipment: EcoCounter Pyro Counter

The Pyro Counter is able to count bicyclists, pedestrians, skateboarders, rollerbladers, or anyone who passes within approximately 16.5 feet of the equipment. However, the device is unable to differentiate between the different users and simply counts them as general users.

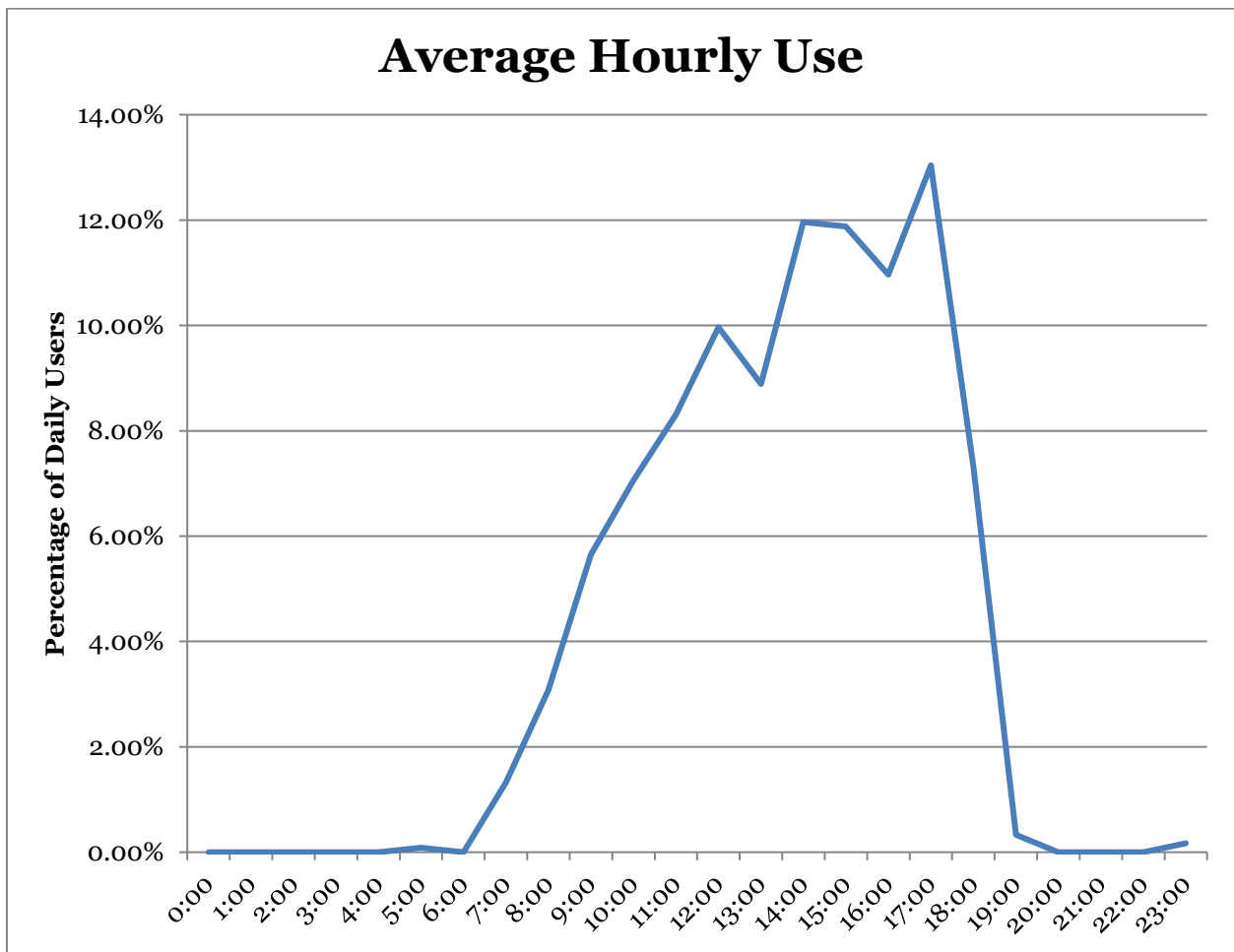
Possible sources of error include facility-users walking side-by-side or very close to each other; this is likely to include people walking or running side-by-side, children being held by a parent or walking along side of them, or dense groups of users. It is unclear how many users are likely to have been missed due to these circumstances and there has been no effort to make up for this likely discrepancy.

Results

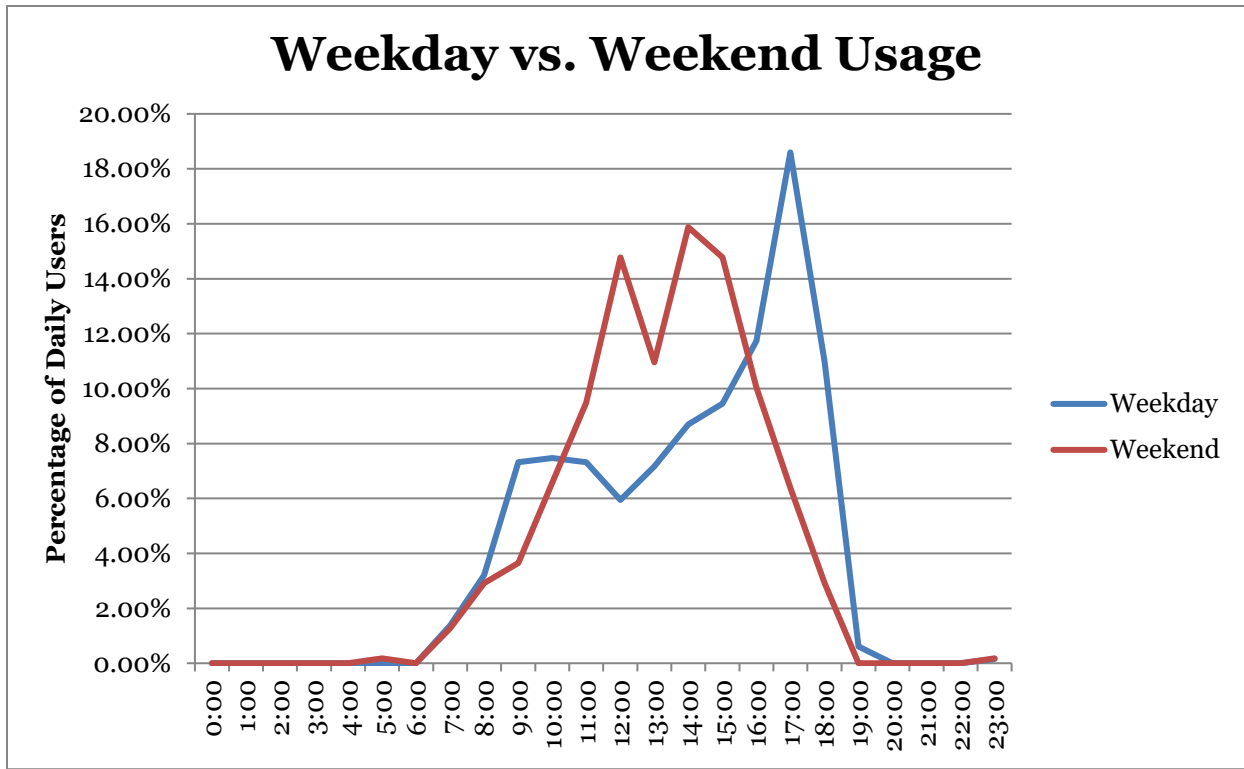
Total Users	1204
Users/Hour	7.2
Peak 24-Hour Usage	315
Peak Day	Sunday, March 6 th , 2022
Peak 2-Hour Period	108
Peak 2-Hour Day & Time	Sunday, March 6 th , 2022, 4:00pm – 6:00pm

Patterns of Use

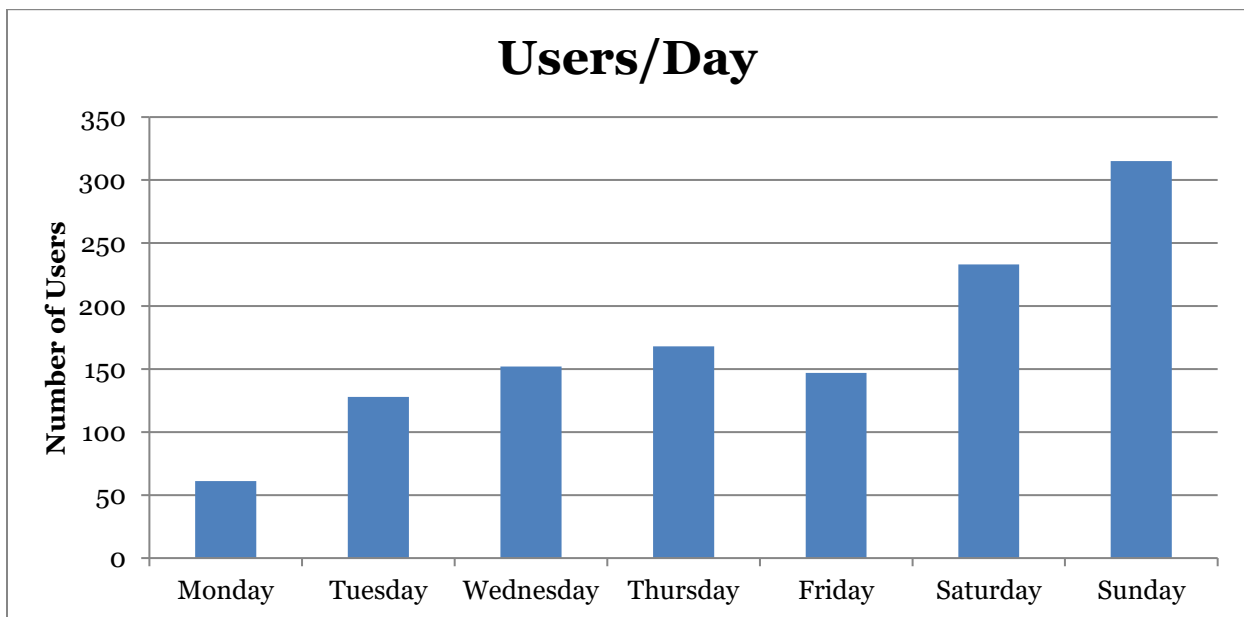
The following chart illustrates the average use of the sidewalk at the count location. This includes both weekday and weekend data and has greater weekday representation



The second chart illustrates the different pattern of usage between the weekday and weekend.



The third chart shows users/day.



Notes

Date	Minimum Temperature	Maximum Temperature	Average Temperature	Precipitation (in inches)	Max Wind Speed
2/28/2022	33	57	43.1	0.38	10 mph
3/01/2022	31	64	46.4	0.00	10 mph
3/02/2022	31	69	50.3	0.00	14 mph
3/03/2022	35	75	56.0	0.00	17 mph
3/04/2022	37	64	51.0	0.00	10 mph
3/05/2022	38	70	54.6	0.00	17 mph
3/06/2022	57	72	63.1	0.00	20 mph
3/07/2022	66	49	59.7	0.23	18 mph