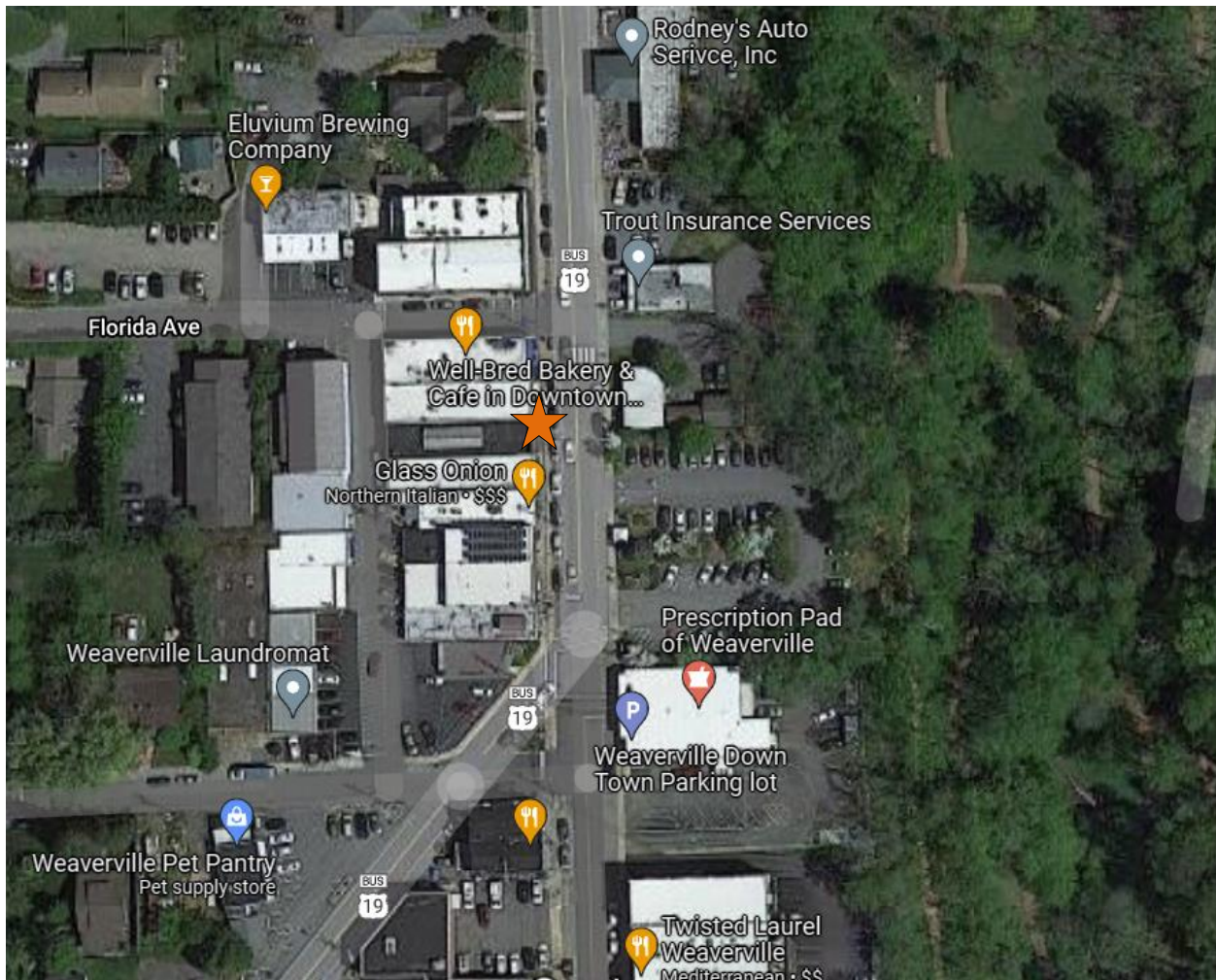


Downtown Weaverville Pedestrian Count

Time Period: Thursday, November 4, 2021, 12:00pm – Thursday, November 11, 2021, 12:00pm

Location: Outside Curtis Wright Outfitters



(Image: Google Maps)

Equipment: EcoCounter Pyro Counter

The Pyro Counter is able to count bicyclists, pedestrians, skateboarders, rollerbladers, or anyone who passes within approximately 16.5 feet of the equipment. However, the device is unable to differentiate between the different users and simply counts them as general users.

Possible sources of error include facility-users walking side-by-side or very close to each other; this is likely to include people walking or running side-by-side, children being held by a parent or walking along side of

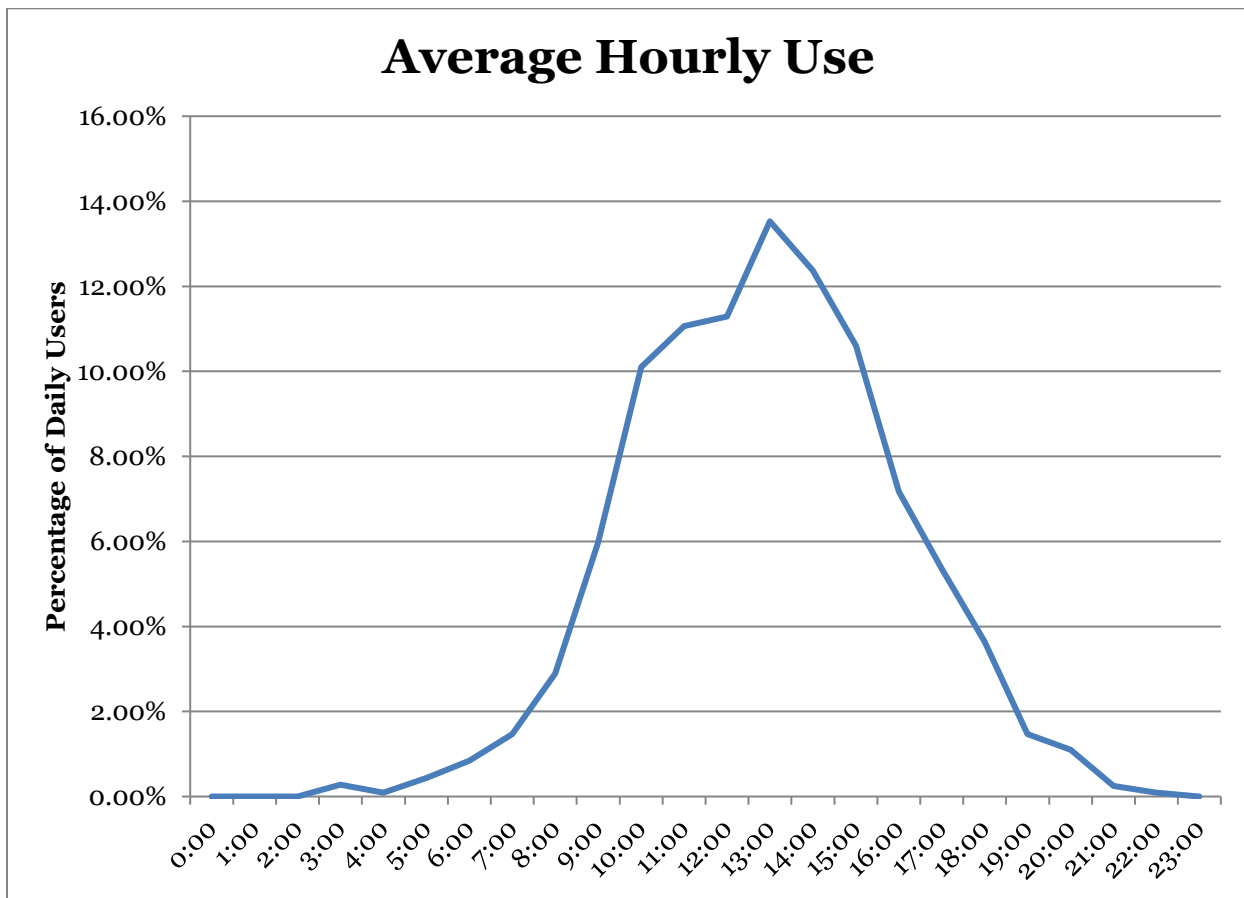
them, or dense groups of users. It is unclear how many users are likely to have been missed due to these circumstances and there has been no effort to make up for this likely discrepancy.

Results

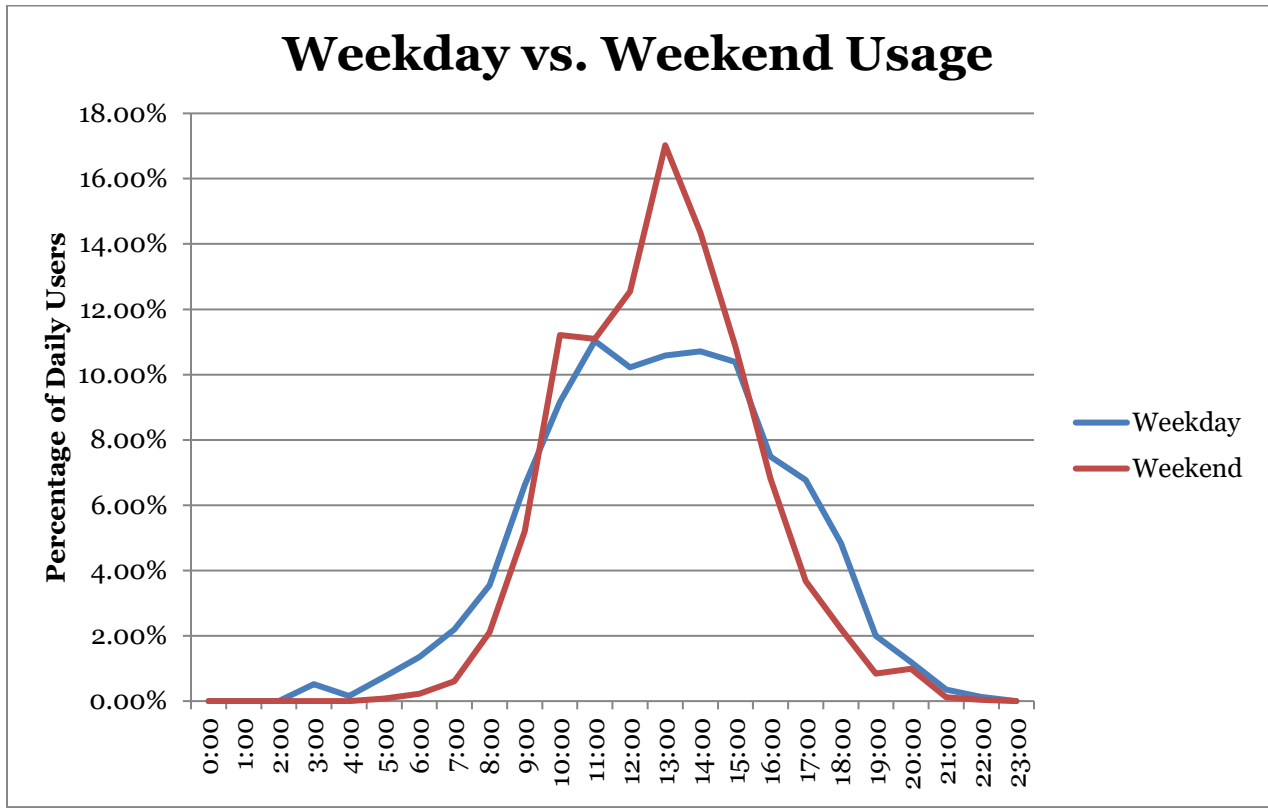
Total Users	5714
Users/Hour	34
Peak 24-Hour Usage	1700
Peak Day	Saturday, November 6th, 2021
Peak 2-Hour Period	568
Peak 2-Hour Day & Time	Saturday, November 6th, 1:00pm – 2:00pm

Patterns of Use

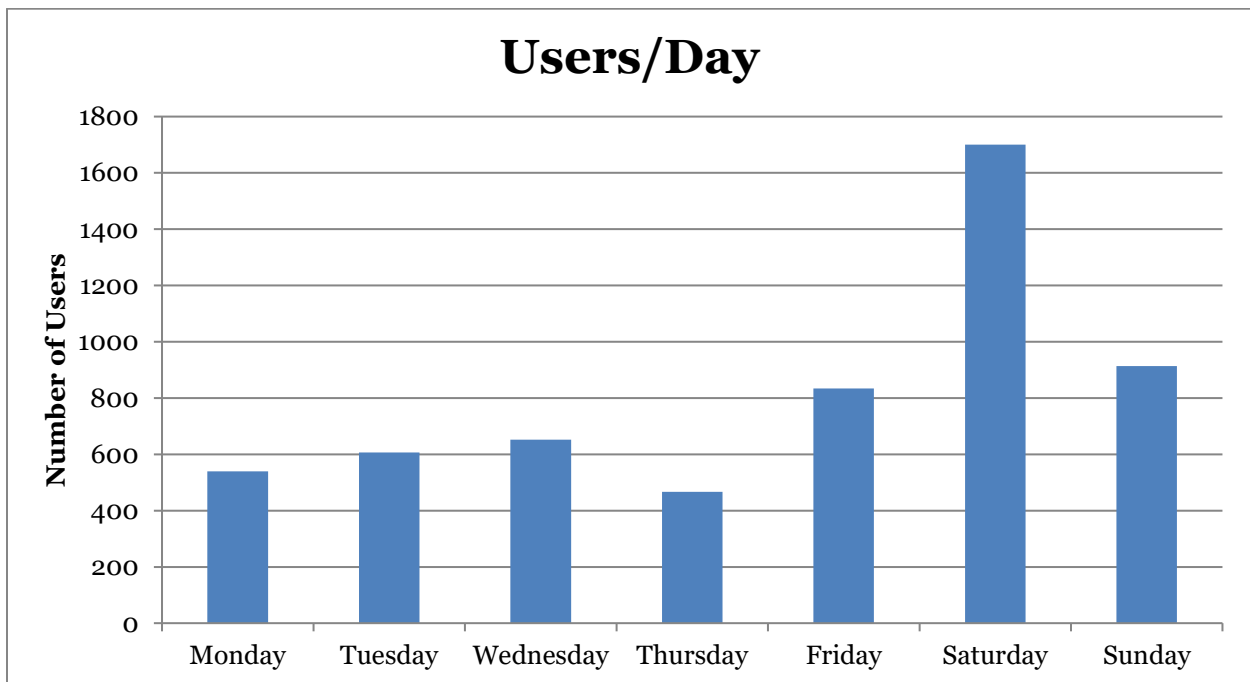
The following chart illustrates the average use of the sidewalk at the count location. This includes both weekday and weekend data and has greater weekday representation



The second chart illustrates the different pattern of usage between the weekday and weekend.



The third chart shows users/day.



Notes

Date time	Minimum Temperature	Maximum Temperature	Temperature	Precipitation	Wind Speed
11-04-2021	38.1	41.7	40.2	0.17	3.7
11-05-2021	34.9	49.5	41	0	5.3
11-06-2021	31.4	53.3	41.1	0	6.5
11-07-2021	31.7	62	45.4	0	12.4
11-08-2021	34.3	70	48.8	0	8.6
11-09-2021	31.9	76.1	50.3	0	5.4
11-10-2021	40.9	74	54.6	0	6.9
11-11-2021	40.9	56.9	48.3	0.19	6.9