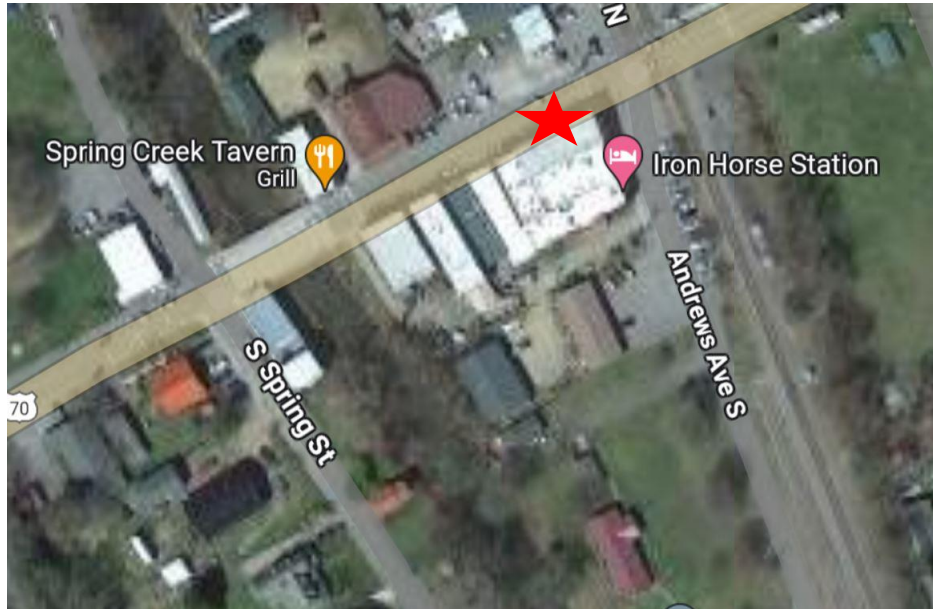


# Hot Springs Sidewalk Pedestrian Count

---

**Time Period:** Tuesday August 27, 2024 – Monday, September 2, 2024.

**Location:** Located on Bridge Street on the sidewalk outside of City Hall. The second location is just outside of the Hardware Store on Bridge Street.



(Image: Google Maps)

**Equipment:** EcoCounter Pyro Counter, set out on August 26, and retrieved September 5, 2024

EcoCounter Pyro Counter. Placed 8/26/2024 and retrieved 8/15/2024. RPO 1 Counter was located outside City Hall. RPO 02 was mounted outside of Gentry Hardware.

The Pyro Counter can count bicyclists, pedestrians, skateboarders, rollerbladers, or anyone who passes within approximately 16.5 feet of the equipment. However, the device is unable to differentiate between the different users and simply counts them as general users.

Possible sources of error include facility-users walking side-by-side or close to each other; this is likely to include people walking or running side-by-side, children being held by a parent or walking along side of them, or dense groups of users. It is unclear the number of users who were likely to have been missed due to these circumstances and there has been no effort to make up for this discrepancy.

As with all these surveys, this is just a snapshot of time for activity in the study area. There can be differences in activity due to the time of year the survey is conducted. Weather can have an impact on the results of the survey. Efforts will be made to repeat the survey during different seasons and during the same time of the year during future years.

## Results

This is the second time that these sites have been visited. This year, the survey was performed over Labor Day Weekend. Last year the data was collected the week up to [October 25, 2023](#). Last year, the data was comparable at both ends of the street, with 9598 pedestrians counted in front of city Hall and 9517 in front of Gentry Hardware. Peak usage was higher near city hall with 2400 people counted on Saturday October 21<sup>st</sup>. The peak two-hour periods were comparable with 611 people walking past the counter on Saturday between 1 PM to 3 PM. The peak two-hour period was Noon to 2 PM on Sunday with 704 people. The Gentry Hardware Store location is close to Dorland Memorial Presbyterian Church and Hot Springs First Baptist Church.

This year the data in front of Gentry Hardware was corrupted when the counter was rotated towards the street at approximately 3 Pm on Thursday 8/29/2024, invalidating comparisons between the data sets for most of the survey. The activity at the two locations were nearly identical on 8/26 and 8/27 with 359 and 221 passersby in front of city Hall and 361 and 223 passersby in front of Gentry Hardware. Wednesday's data was 428 and 190, respectively, with 196 people in front of City Hall at 1 PM versus 25 in front of Gentry Hardware, at the same time of day. For this reason, this report is only going to compare the data from the prior report in front of City Hall with the current data.

**Hot Springs - Bridge Street - City Hall**

<b>Total Users</b>	<b>5,188</b>
<b>Users/Hour</b>	<b>30.9</b>
<b>Peak 24-Hour Usage</b>	<b>1,309</b>
<b>Peak Day</b>	<b>Saturday August 31, 2024</b>
<b>Peak 2-Hour Usage Period</b>	<b>379</b>
<b>Peak 2-Hour Date and Time</b>	<b>Sun. September 1, 2024 -- 2 PM to 4 PM</b>

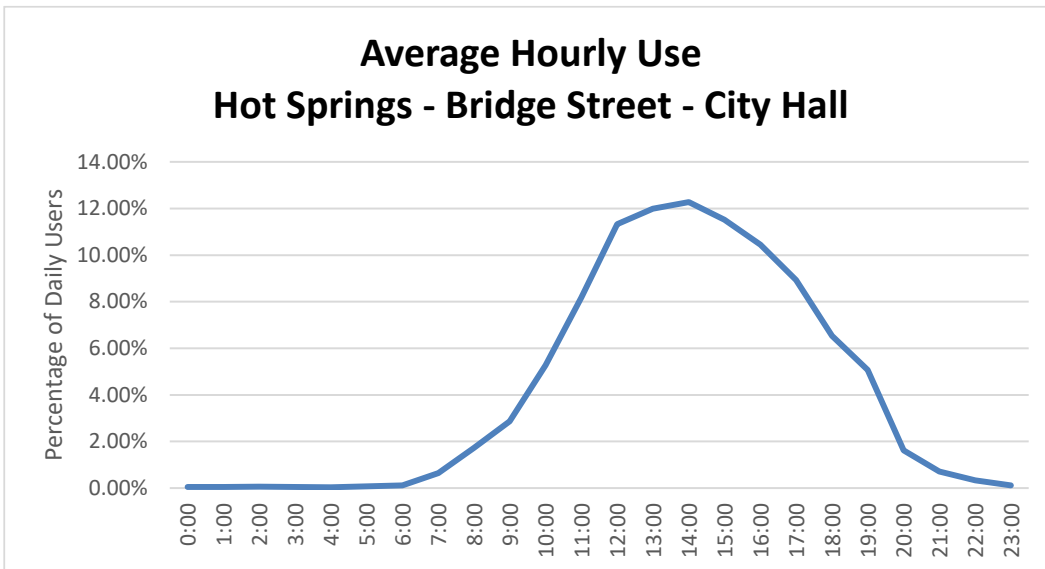
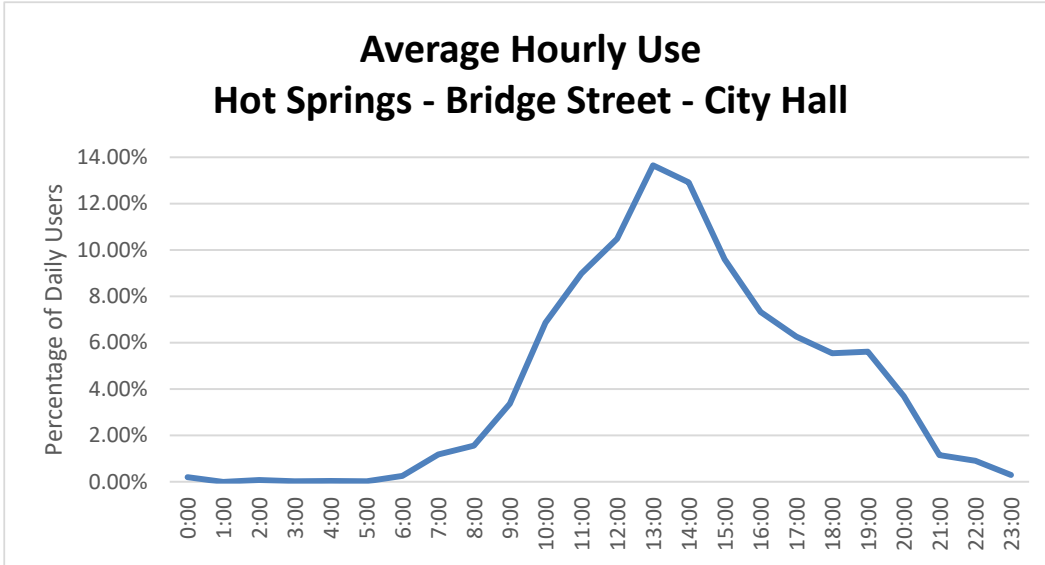
**Hot Springs - Bridge Street - City Hall**

<b>Total Users</b>	<b>9598</b>
<b>Users/Hour</b>	<b>57.1</b>
<b>Peak 24-Hour Usage</b>	<b>2400</b>
<b>Peak Day</b>	<b>Saturday October 21, 2023</b>
<b>Peak 2-Hour Usage Period</b>	<b>611</b>
<b>Peak 2-Hour Date and Time</b>	<b>Saturday October 21, 2023 -- 1 to 3 PM</b>

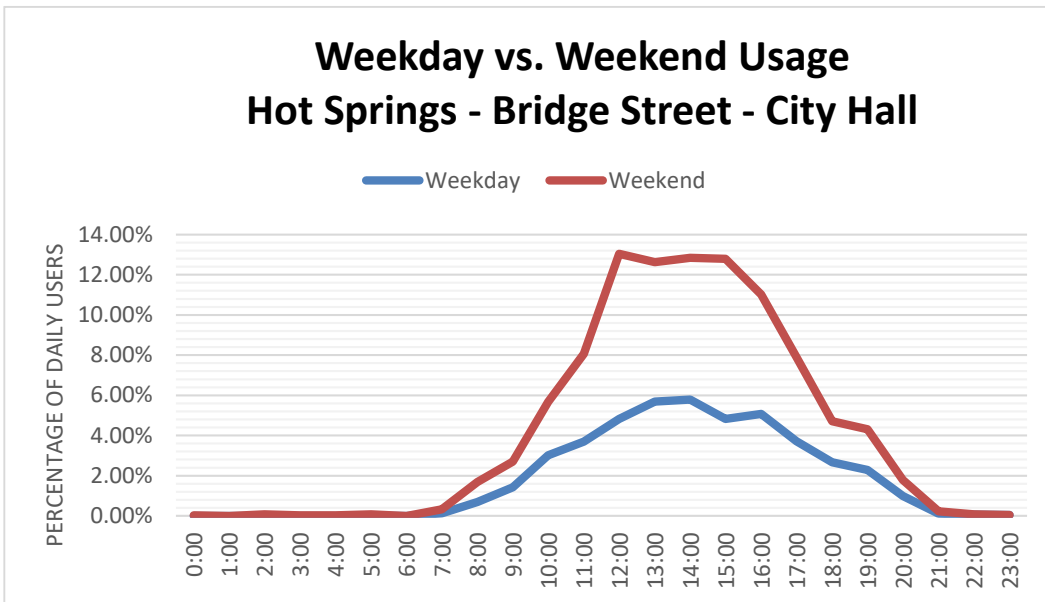
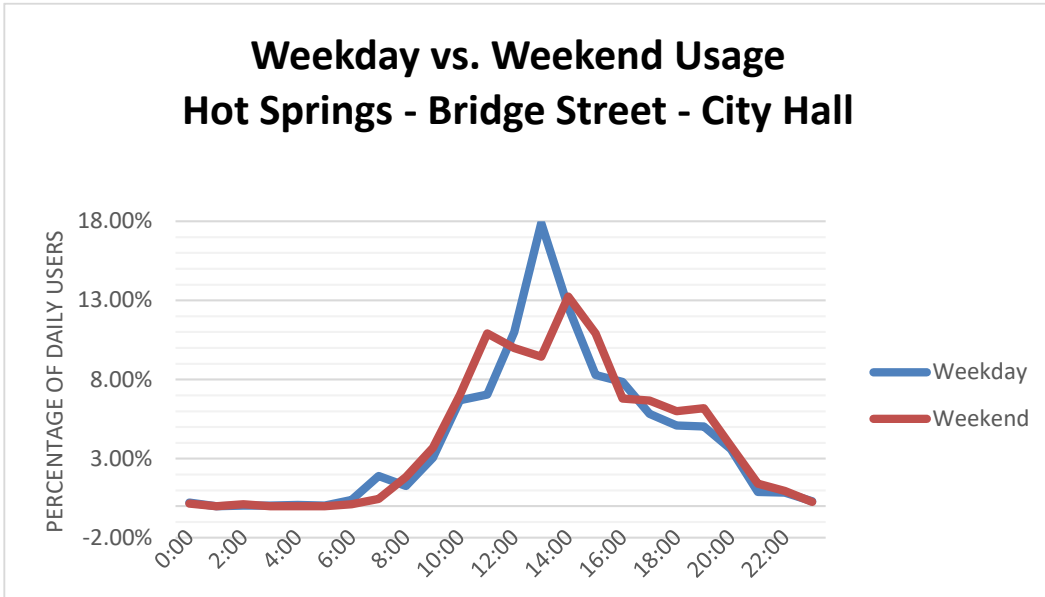
Pedestrian counts can vary from week to week, month to month, season by season, and year to year. The weather was generally cooler during October of 2023 than Late August – Early September of 2024. There may be more traffic during the Fall than the late Summer as we approach Peak Leaf Colors.

## Patterns of Use

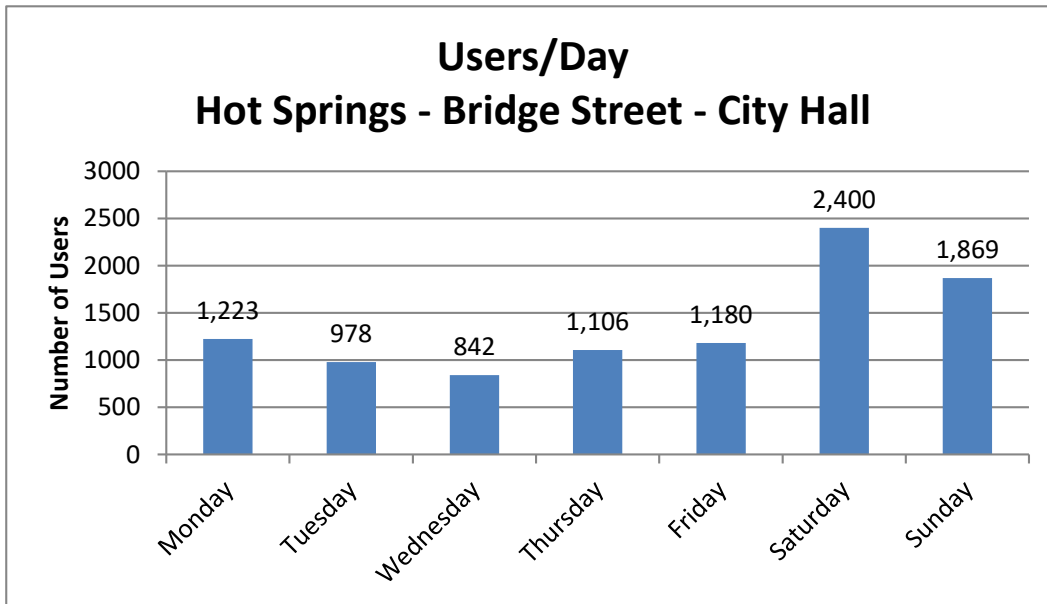
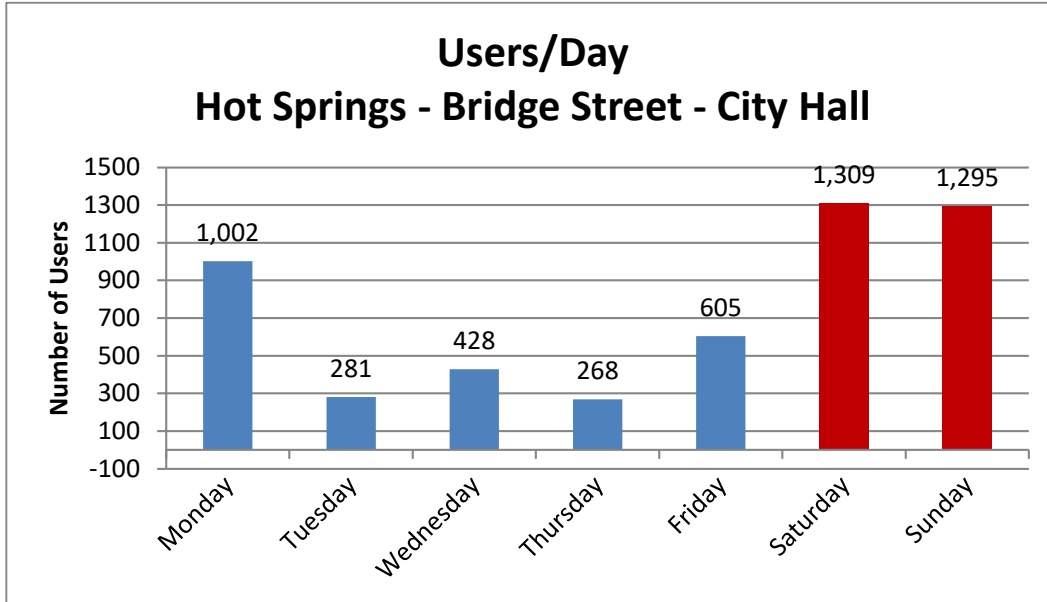
The following chart illustrates the average use of the sidewalk at the count location. This includes both weekday and weekend data and has greater weekday representation. The top image is from August/September 2024 and the lower image is from October 2023.



The second chart illustrates the different pattern of usage between the weekday and weekend. The top image is from August/September 2024 and the lower image is from October 2023.

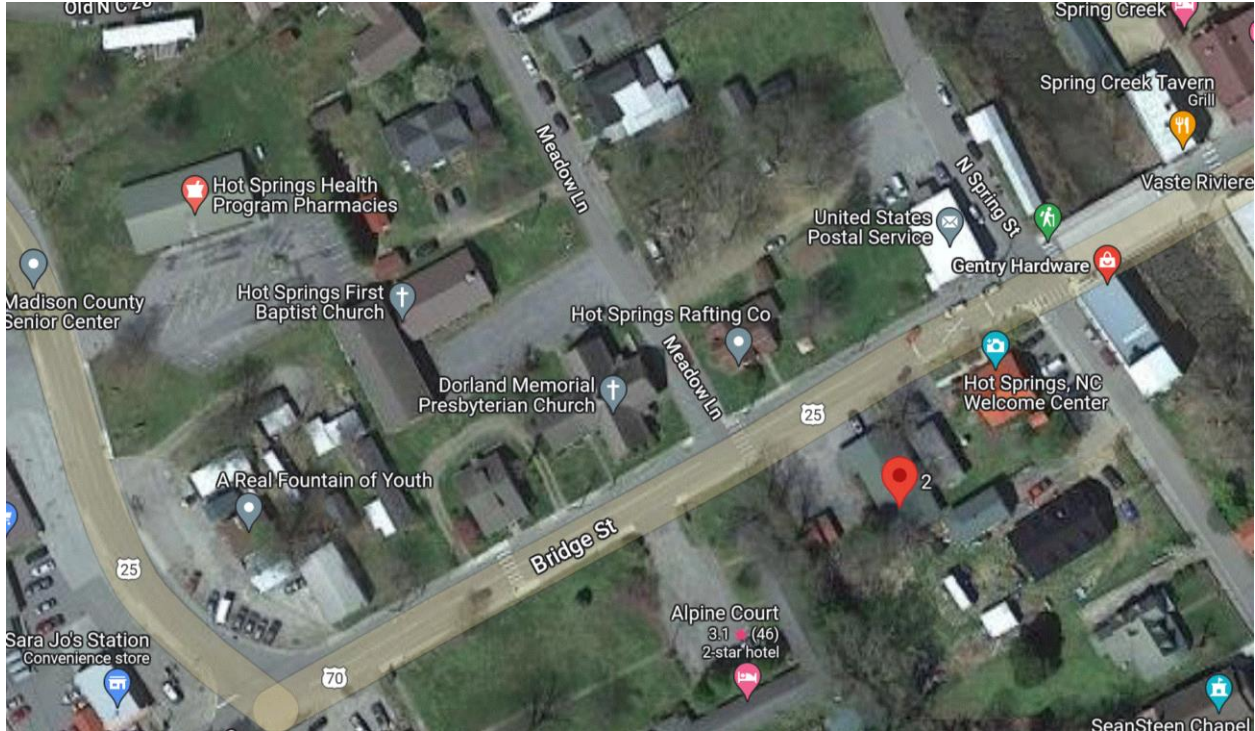


The third chart shows users/day. The top image is from August/September 2024 and the lower image is from October 2023. The 2023 data was consistently higher than the 2024 data.



## Notes:

The weather was consistently hotter during the 2024 data collection period than during the 2023 period. Both study periods saw heavy rain on one day of each study period. Friday, 10/20/23 and Sunday, September 1, 2024.



Daily Observations - Hot Springs															
Date	Temperature (°F)			Dew Point (°F)			Humidity (%)			Wind Speed (mph)			Pressure (in)		Precipitation (in)
	Max	Avg	Min	Max	Avg	Min	Max	Avg	Min	Max	Avg	Min	Max	Min	
8/27/2024	96.1	76.2	63.3	71.2	66.4	62.0	96	75	39	0.0	0.0	0.0	29.83	29.71	0.00
8/28/2024	97.3	79.0	64.9	72.9	67.6	63.7	96	72	38	0.0	0.0	0.0	29.81	29.68	0.00
8/29/2024	100.9	80.9	65.8	73.4	68.5	64.2	95	70	35	0.0	0.0	0.0	29.83	29.68	0.00
8/30/2024	97.5	79.5	67.6	74.2	69.9	65.7	94	75	44	4.9	0.9	0.0	29.80	29.67	0.00
8/31/2024	92.5	76.1	67.5	75.6	70.4	66.3	99	85	50	4.5	0.9	0.0	29.79	29.61	0.70
9/1/2024	85.8	72.5	68.2	76.2	70.0	67.9	99	93	66	6.3	0.6	0.0	29.71	29.58	1.53
9/2/2024	86.2	73.7	64.2	74.2	67.7	63.6	99	84	50	6.0	0.9	0.0	29.76	29.63	0.00

<https://www.wunderground.com/dashboard/pws/KNCHOTSP15/table/2024-09-5/2024-09-5/monthly>

Daily Observations - Hot Springs, NC															
Date	Temperature (°F)			Dew Point (°F)			Humidity (%)			Wind Speed (mph)			Pressure (in)		Precipitation (in)
	Max	Avg	Min	Max	Avg	Min	Max	Avg	Min	Max	Avg	Min	High	Low	
10/19/23	72.0	55.1	44.2	54.8	48.3	43.3	98	81	45	8.1	1.3	0.0	29.77	29.49	0.00
10/20/23	64.4	55.6	49.5	58.3	52.0	46.8	99	89	59	7.6	0.9	0.0	29.50	29.23	1.49
10/21/23	68.7	53.0	42.3	50.6	46.2	42.0	99	81	43	9.6	1.2	0.0	29.50	29.35	0.00
10/22/23	65.8	57.0	43.7	49.5	45.6	41.0	99	68	48	9.2	2.2	0.0	29.76	29.40	0.00
10/23/23	71.8	53.3	39.9	50.6	43.6	32.0	99	74	25	5.6	1.1	0.0	29.89	29.76	0.00
10/24/23	77.4	56.7	42.8	48.3	43.3	35.2	91	66	22	7.4	1.3	0.0	29.99	29.85	0.00
10/25/23	76.6	59.0	44.1	53.2	45.2	39.4	88	63	33	6.5	1.2	0.0	30.02	29.85	0.00

<https://www.wunderground.com/history/monthly/us/nc/fletcher/KAVL/date/2023-9>